

RD10

GM 10 Bolt, 8.5", 28 SPL**

****THIS MODEL WAS SUPERSEDED BY RD83, CROSSED OUT PARTS NOT AVAILABLE**

PARTS LIST

ITEM #	QTY	DESCRIPTION	PART #	NOTES
01	1	FLANGE CAP	020902	
02	1	CLUTCH GEAR	050304	
03	1	DIFFERENTIAL CASE	010905	
04	1	RETURN SPRING (PK OF 4)	150101SP	
05	1	RETAINING PIN SET (PK OF 4)	120301SP	
06	1	LONG CROSS SHAFT	060204SP	
07	1	PISTON	040304	
08	1	U-RING	160301SP	
09	1	CYLINDER CAP ASSEMBLY	030443	
10	1	SEAL HOUSING O-RINGS (PK OF 2)	160206SP	1
11	1	CYL CAP RETAINING BOLT (PK OF 8)	200205SP	
12	1	LOCKING TAB (8mm) (PK OF 8)	150401SP	
13	1	TAPERED ROLLER BEARING	160105	2
14	1	SEAL HOUSING KIT	080604SP	
15	1	SHIM KIT	SHK003	
16	1	SPLINED SIDE GEAR	SEE NOTE	3
17	2	PINION GEAR	SEE NOTE	3
18	1	PINION THRUST WASHER(PK OF 4)	151103SP	
19	1	SIDE GEAR	SEE NOTE	3
20	1	S GEAR THRUST WASHER (PK OF 2)	151003SP	
*	1	C-CLIP KIT	CCK003	
*	1	BULKHEAD FITTING KIT	170102	
*	1	PUSH-IN FITTING (5mm to 1/8"BSPP)	170201SP	
*	1	AIR LINE (5mm DIA X 6m LONG)	170301SP	
*	1	SOLENOID VALVE (12V)	180103	
*	1	SWITCH	180209SP	
*	1	SWITCH COVER (REAR)	180211SP	
*	1	CABLE TIE (PK OF 25)	180305	
*	1	OPERATING & SERVICE MANUAL	210200	
*	1	INSTALLATION GUIDE	210210	

* *Not illustrated in exploded view*

NOTES

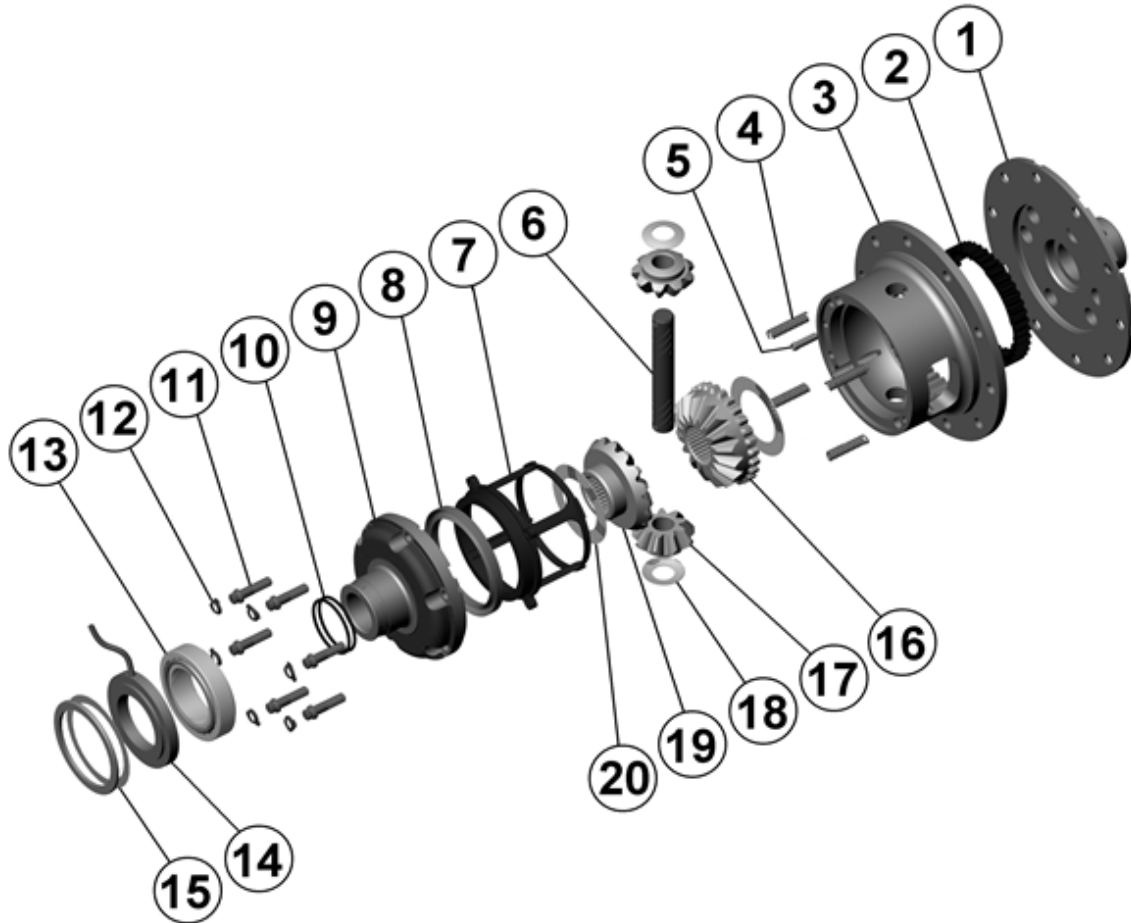
- 1 For replacement O-rings use only BS130 Viton 75.
- 2 For replacement bearing use Timken#LM501349 / LM501310.
- 3 Available only as complete 4 gear set #728D042C
- For information on RD10 models with 4 cylinder cap bolts, contact ARB.
- Ring gear bolts are 7/16" - 20 left-hand thread, and must be removed in a clockwise direction.

RD10

GM 10 Bolt, 8.5", 28 SPL**

****THIS MODEL WAS SUPERSEDED BY RD83, CROSSED OUT PARTS NOT AVAILABLE**

EXPLODED DIAGRAM



SPECIFICATIONS

Axle Spline	28 tooth, Ø30.5mm [1.20"]
Ratio Supported	2.73:1 & up
Ring Gear ID	127.0mm [5.00"]
Ring Gear OD	216mm [8.5"]
Ring Gear Bolts	10 bolts on Ø156mm [6.14"]
Ring Gear Torque	88Nm [65 ft-lb]
Backlash	0.15-0.25mm [0.006-0.010"]
Bearing Cap Torque	81Nm [60 ft-lb]