

RD123

Mazda 8",RR,shim adjusted

PARTS LIST

ITEM #	QTY	DESCRIPTION	PART #	NOTES
1	1	FLANGE CAP KIT	028508SP	
2	1	BONDED SEAL	160701SP	
3	1	CLUTCH GEAR & WAVESPRING KIT	050903SP	
4	1	WAVESPRING	150702SP	
5	1	SPIDER BLOCK	070503SP	
6	1	THRUST BLOCK	110505SP	
*	1	THRUST BLOCK	110508SP	
7	2	SIDE GEAR THRUST WASHER	SEE NOTE	3
8	1	DIFFERENTIAL CASE	013108SP	
9	1	TAPERED ROLLER BEARING	NOT SUPPLIED	
10	1	SHIM KIT	SHK008	
11	1	SEAL HOUSING KIT	081804SP	
12	1	SEAL HOUSING O-RINGS (PK OF 2)	160235SP	1
13	1	TAPERED ROLLER BEARING	NOT SUPPLIED	
14	1	SPLINED SIDE GEAR	SEE NOTE	2
15	4	PINION THRUST WASHER	SEE NOTE	3
16	4	PINION GEAR	SEE NOTE	2
17	4	SHORT CROSS SHAFT	061402SP	
18	1	SIDE GEAR	SEE NOTE	2
19	1	COUNTERSUNK SCREW (PK OF 2)	200213SP	
20	1	RETAINING PIN SET (PK OF 4)	120601SP	
*	1	BULKHEAD FITTING KIT (BANJO TYPE)	170114	4
*	1	AIR LINE (6mm DIA X 6m LONG)	170314SP	4
*	1	SOLENOID VALVE (12V)	180103	
*	1	SWITCH	180209SP	
*	1	SWITCH COVER (REAR)	180211SP	
*	1	CABLE TIE (PK OF 25)	180305	
*	1	OPERATING & SERVICE MANUAL	210200	
*	1	INSTALLATION GUIDE	2102123	

* *Not illustrated in exploded view*

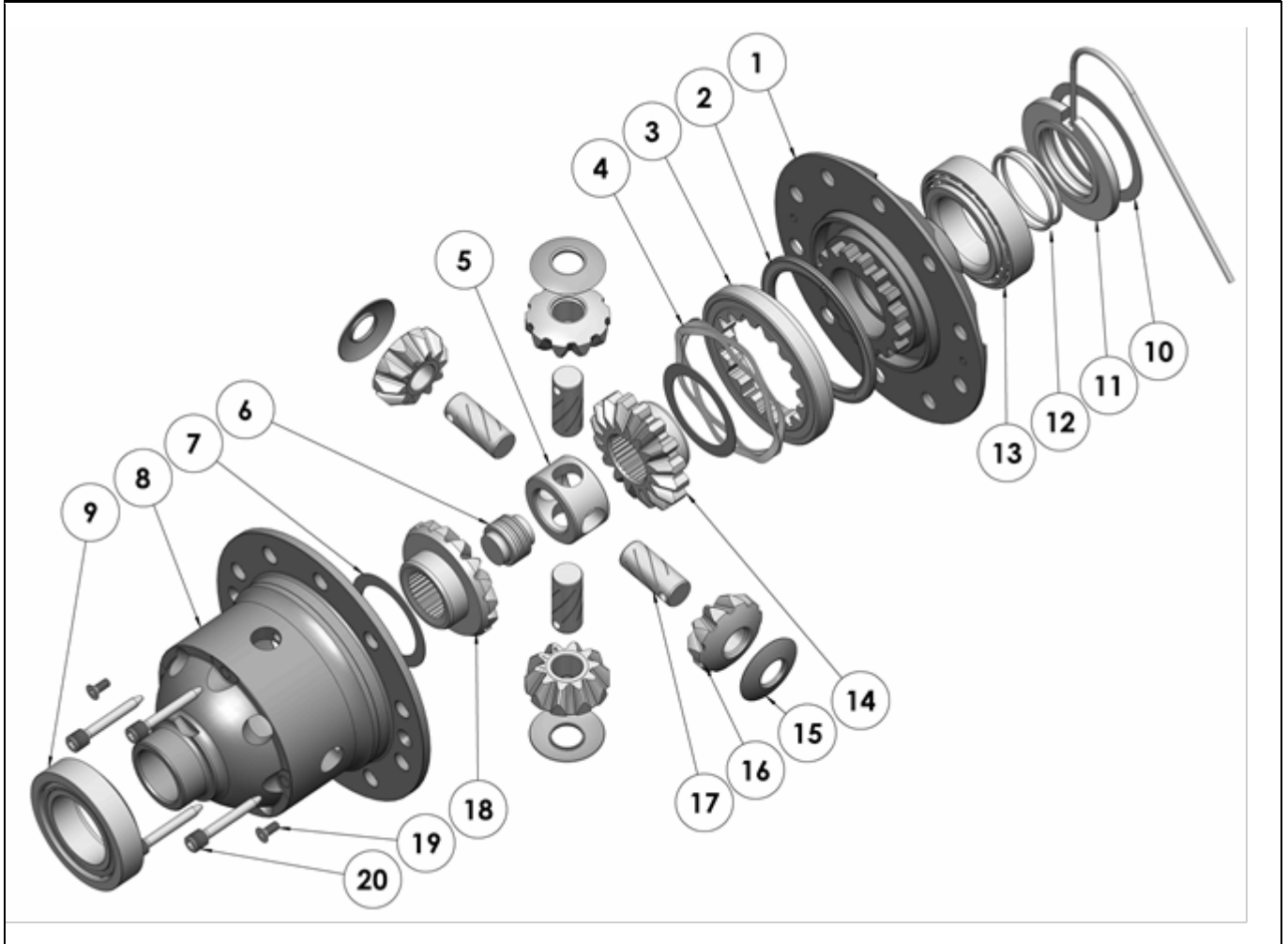
NOTES

- 1 For replacement O-rings use only BS133 Viton 75.
- 2 Available only as complete 6 gear set # 728J061
- 3 Available only as complete thrust washer kit #730J01
- 4 All diffs produced before serial #17070001 came with 5mm air connection system. For information contact ARB.
- Not suitable for adjuster nut type third member.
- Newer shim type third member made by Dana Spicer will retrofit to older shafts and banjo.

RD123

Mazda 8",RR,shim adjusted

EXPLODED DIAGRAM



SPECIFICATIONS

Axle Spline	30 tooth
Ratio Supported	All
Ring Gear ID	121.3mm [4.77"]
Ring Gear OD	205.5mm [8.09"]
Ring Gear Bolts	10 bolts on Ø146.25 [5.75"]
Ring Gear Torque	95Nm [70 ft-lb]
Backlash	0.15-0.25mm [0.006-0.010"]
Bearing Cap Torque	81Nm [60 ft-lb]