

RD141

Toyota 8" IFS,34 SPL,58mm BRNG

****THIS MODEL WAS SUPERSEDED BY RD151, CROSSED OUT PARTS NOT AVAILABLE**

PARTS LIST

| ITEM # | QTY | DESCRIPTION | PART # | NOTES |
|--------|-----|------------------------------------|--------------|-------|
| 01 | 1 | BONDED SEAL | 160703SP | |
| 02 | 1 | CLUTCH GEAR & WAVESPRING KIT | 050904SP | 4 |
| 03 | 1 | WAVESPRING | 150704SP | |
| 04 | 1 | LONG CROSS SHAFT | 060204SP | |
| 05 | 1 | SPIDER BLOCK | 070201SP | |
| 06 | 1 | DIFFERENTIAL CASE | 013022SP | |
| 07 | 1 | RETAINING PIN SET (PK OF 4) | 120601SP | |
| 08 | --- | TAPERED ROLLER BEARING | NOT SUPPLIED | |
| 09 | 1 | SHIM KIT | SHK009 | |
| * | 1 | MASTER SHIM | 150305 | |
| 10 | 1 | SEAL HOUSING KIT | 081812SP | |
| 11 | 1 | SEAL HOUSING O-RINGS (PK OF 2) | 160207SP | 1 |
| 12 | 1 | FLANGE CAP KIT | 027322SP | |
| 13 | 1 | LOCKING SIDE GEAR | SEE NOTE | 2 |
| 14 | 4 | PINION THRUST WASHER | SEE NOTE | 3 |
| 15 | 4 | PINION GEAR | SEE NOTE | 2 |
| 16 | 2 | SHORT CROSS SHAFT | 060403SP | |
| 17 | 1 | SIDE GEAR | SEE NOTE | 2 |
| 18 | 2 | SIDE GEAR THRUST WASHER | SEE NOTE | 3 |
| 19 | 1 | COUNTERSUNK SCREW (PK OF 2) | 200213SP | |
| 20 | 2 | ANTI-FRICTION BUSHING (PTFE) | 160805SP | |
| * | 1 | BULKHEAD FITTING KIT (BANJO TYPE) | 170114 | 5 |
| * | 1 | NYLON AIR LINE (6mm DIA X 6m LONG) | 170314SP | 5 |
| * | 1 | SOLENOID VALVE (12V) | 180103 | |
| * | 1 | SWITCH | 180209SP | |
| * | 1 | SWITCH COVER (FRONT) | 180210SP | |
| * | 1 | CABLE TIE (PK OF 25) | 180305 | |
| * | 1 | OPERATING & SERVICE MANUAL | 210200 | |
| * | 1 | INSTALLATION GUIDE | 2102141 | |
| * | | | | |
| * | | | | |

* *Not illustrated in exploded view*

NOTES

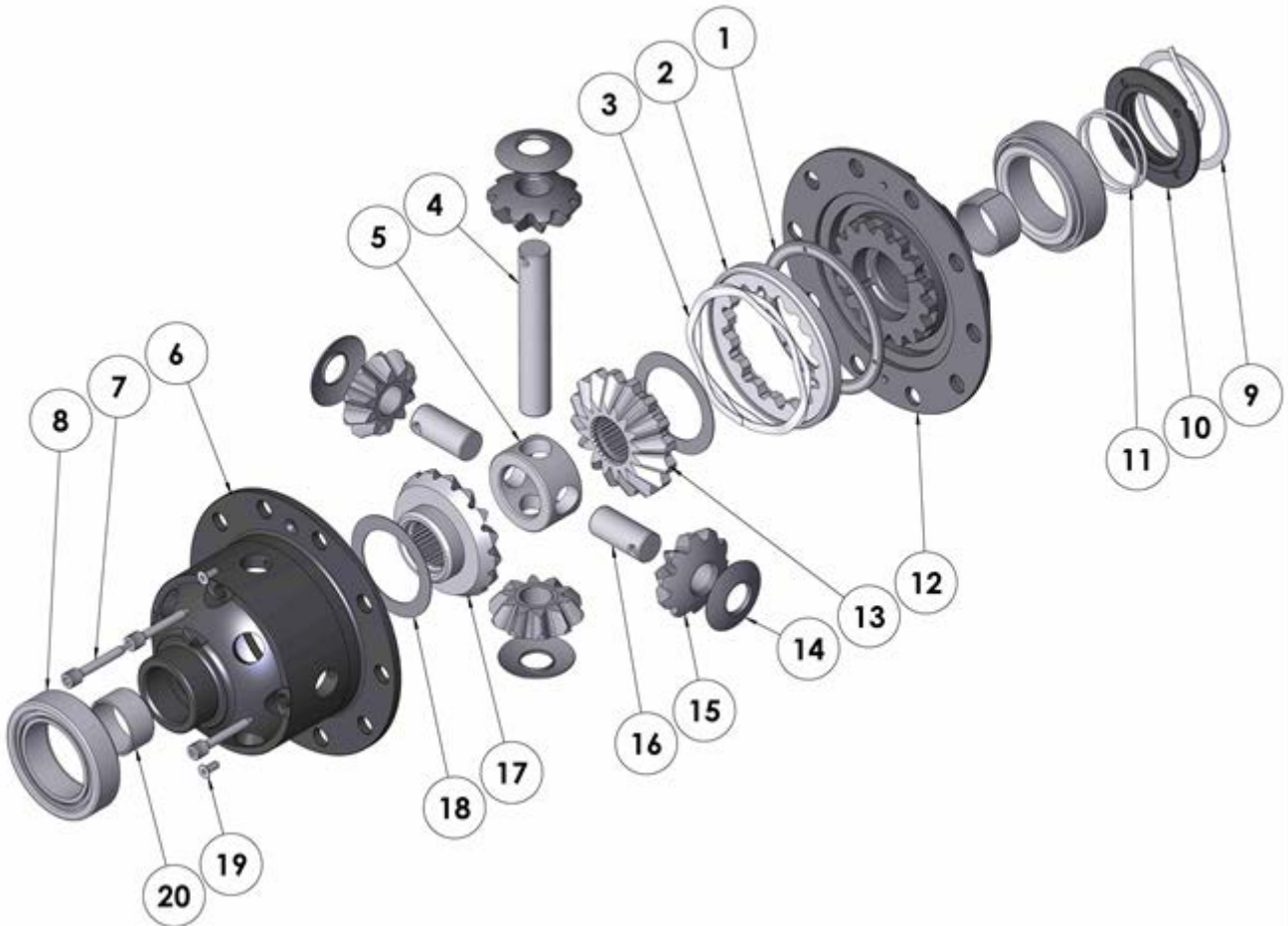
- 1 For replacement O-rings use only BS136 Viton 75.
- 2 Available only as complete 6 gear set #728H191
- 3 Available only as complete thrust washer kit #730H01
- 4 Always bench test both engagement and disengagement of the clutch gear before reinstalling *Air Locker* into the vehicle.
- 5 All diffs produced before serial #17070001 came with 5mm air connection system. For information contact ARB.
 - Spare axle retaining clips may be required (not supplied) to refit CV shafts.
 - For 8" IFS with 50mm carrier bearings refer to RD131 ([Section 2.131](#)).
 - For 8" IFS with 53mm carrier bearings refer to RD111 ([Section 2.111](#)) or RD121 ([Section 2.121](#)).

RD141

Toyota 8" IFS, 34 SPL, 58mm BRNG

****THIS MODEL WAS SUPERSEDED BY RD151, CROSSED OUT PARTS NOT AVAILABLE**

EXPLODED DIAGRAM



SPECIFICATIONS

| | |
|------------------|----------------------------|
| Axle Spline | 34 tooth, Ø34.9mm [1.37"] |
| Ratio Supported | All |
| Ring Gear ID | 134.0mm [5.28"] |
| Ring Gear OD | 200mm [8"] |
| Ring Gear Bolts | 12 bolts on Ø160mm [6.30"] |
| Ring Gear Torque | 135Nm [100 ft-lb] |
| Backlash | 0.15-0.25mm [0.006-0.010"] |