

RD200

ROCKWELL 2.5T, 40 SPL

PARTS LIST

ITEM #	QTY	DESCRIPTION	PART #	NOTES
1	1	FLANGE CAP KIT	028602SP	
2	1	BONDED SEAL	160703SP	
3	1	CLUTCH GEAR	050807SP	
4	1	RETURN SPRING (PK OF 12)	150107SP	
5	1	SPLINED SIDE GEAR	SEE NOTE	2
6	1	RETURN SPRING GUIDE BRACKET	220207	
7	1	RETURN SPRING SUPPORT BRACKET	220208	
8	1	LONG CROSS SHAFT	061501SP	
9	1	SPIDER BLOCK	070402SP	
10	1	SIDE GEAR	SEE NOTE	2
11	2	SIDE GEAR THRUST WASHER	SEE NOTE	3
12	1	DIFFERENTIAL CASE	013202SP	
13	1	RETAINING PIN SET (PK OF 4)	120601SP	
14	2	TAPERED ROLLER BEARING	NOT SUPPLIED	
15	1	SEAL HOUSING BRACKET	220206	
16	1	SEAL HOUSING KIT	082102SP	
17	1	SEAL HOUSING O-RINGS (PK OF 2)	160246SP	1
18	1	HELICAL SPUR GEAR	NOT SUPPLIED	
19	4	PINION GEAR	SEE NOTE	2
20	4	PINION GEAR THRUST WASHER	SEE NOTE	3
21	2	SHORT CROSS SHAFT	061601SP	
*	1	BULKHEAD FITTING KIT (BANJO TYPE)	170114	4
*	1	AIR LINE (6mm DIA X 6m LONG)	170314	4
*	1	SOLENOID VALVE (12V)	180103	
*	1	SWITCH	180209SP	
*	1	SWITCH COVER (FRONT)	180210SP	
*	1	SWITCH COVER (REAR)	180211SP	
*	1	CABLE TIE (PK OF 25)	180305	
*	1	OPERATING & SERVICE MANUAL	210200	
*	1	INSTALLATION GUIDE	2102200	

* *Not illustrated in exploded view*

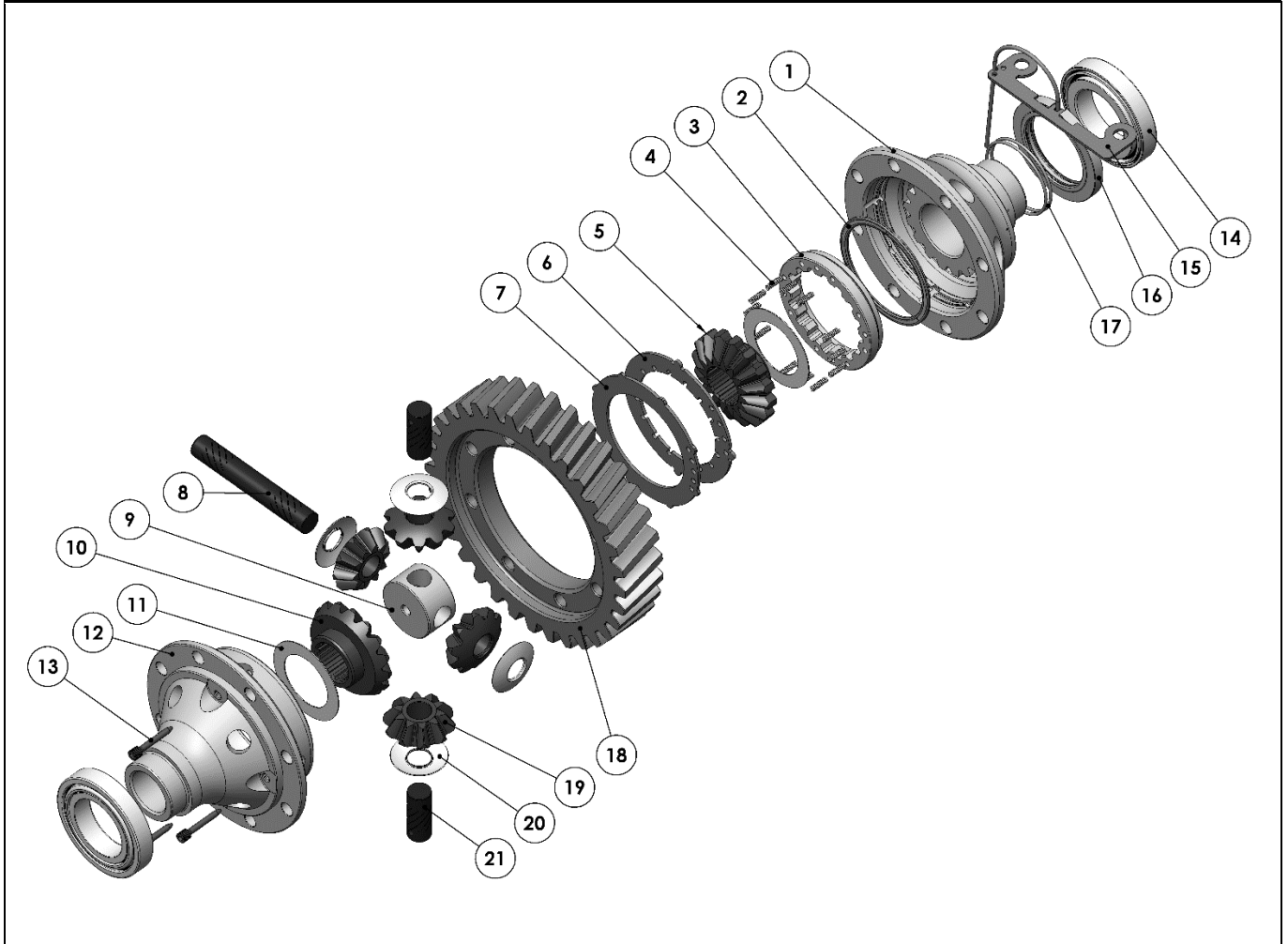
NOTES

- 1 For replacement O-rings use only BS151 Viton 75.
- 2 Available only as complete 6 gear set # 728K051
- 3 Available only as complete thrust washer kit #730K01
- 4 All diffs produced before serial #17070001 came with 5mm air connection system. For information contact ARB.
- For the 16 spline OE shaft model see RD145 ([Section 2.145](#)).

RD200

ROCKWELL 2.5T, 40 SPL

EXPLODED DIAGRAM



SPECIFICATIONS

Axle Spline	40 tooth, Ø43.4mm [1.71"]
Ratio Supported	All
Ring Gear ID	206.38mm [8.125"]
Ring Gear OD	268mm [10.55"]
Ring Gear Bolts	8 bolts on Ø181.1mm [7.13"]