

RD38

Dana 35, non C-clip, 27 SPL, 3.31 & DN**

****THIS MODEL WAS SUPERSEDED BY RD103, CROSSED OUT PARTS NOT AVAILABLE**

PARTS LIST

ITEM #	QTY	DESCRIPTION	PART #	NOTES
01	1	FLANGE CAP	021902	
02	1	CLUTCH GEAR	050504	
03	1	DIFFERENTIAL CASE	042002	
04	1	RETURN SPRINGS (PK OF 4)	150102SP	
05	1	RETAINING PIN SET (PK OF 4)	120401SP	
06	1	LONG CROSS SHAFT	060104SP	
07	2	SHORT CROSS SHAFT	060306	
08	1	PISTON	040601SP	
09	1	U-RING	160303SP	
10	1	CYLINDER CAP	030902	
11	1	SEAL HOUSING O-RINGS (PK OF 2)	160210SP	1
12	1	CYL CAP RETAINING BOLT (PK OF 8)	200207SP	
13	1	LOCKING TAB (6mm) (PK OF 8)	150402SP	
14	1	TAPERED ROLLER BEARING	160105	2
15	1	SEAL HOUSING KIT	080603SP	
16	1	SHIM KIT	SHK003	
17	1	SPLINED SIDE GEAR	131004R	
18	1	PINION THRUST WASHER (PK OF 4)	151105SP	
19	4	PINION GEAR	140501R	
20	1	SPIDER BLOCK	070504	
21	1	SIDE GEAR	130901R	
22	1	S GEAR THRUST WASHER (PK OF 2)	151005SP	
*	1	BULKHEAD FITTING KIT	170102	
*	1	PUSH-IN FITTING (5mm to 1/8" BSPP)	170201SP	
*	1	AIR LINE (5mm DIA X 6m LONG)	170301SP	
*	1	SOLENOID VALVE (12V)	180103	
*	1	SWITCH	180209SP	
*	1	SWITCH COVER (REAR)	180211SP	
*	1	SWITCH COVER (FRONT)	180210SP	
*	1	CABLE TIE (PK OF 25)	180305	
*	1	OPERATING & SERVICE MANUAL	210200	
*	1	INSTALLATION GUIDE	210238	

* *Not illustrated in exploded view*

NOTES

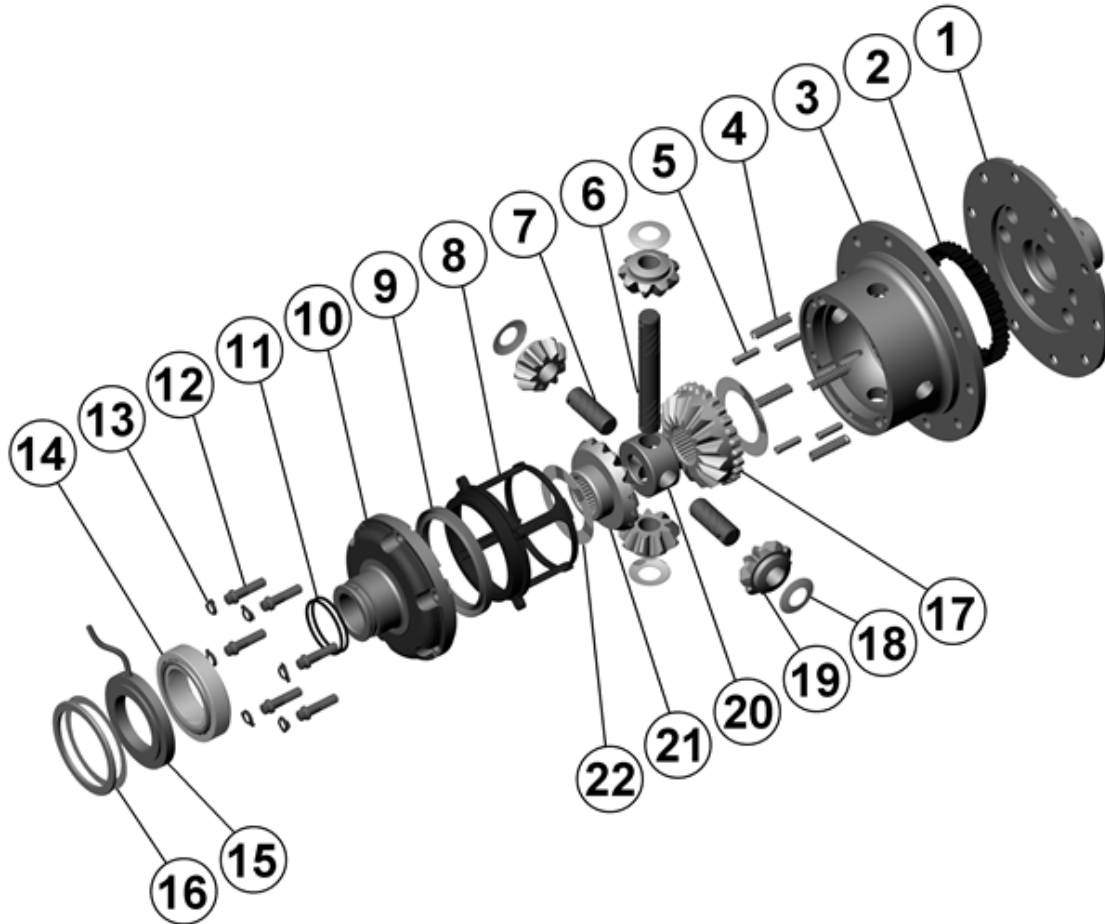
- 1 For replacement O-rings use only BS028 Viton 75.
- 2 For replacement bearing use Timken part # LM501349 / LM501310.
- Not for use with C-clip retained rear axle models unless a C-clip eliminator kit is used.
- For Ford IFS installation refer to tech note ([Section 5.12](#)) for alternative to C-clip use.

RD38

Dana 35, non C-clip, 27 SPL, 3.31 & DN**

****THIS MODEL WAS SUPERSEDED BY RD103, CROSSED OUT PARTS NOT AVAILABLE**

EXPLODED DIAGRAM



SPECIFICATIONS

Axle Spline	27 tooth, Ø29.5mm [1.16"]
Ratio Supported	3.31:1 & down
Ring Gear ID	120.7mm [4.75"]
Ring Gear OD	193mm [7.6"]
Ring Gear Bolts	8 bolts on Ø146mm [5.75"]
Ring Gear Torque	75Nm [55 ft-lb]
Backlash	0.15-0.25mm [0.006-0.010"]
Bearing Cap Torque	75Nm [55 ft-lb]