

RD41

Mitsubishi Jeep,RR**

****THIS MODEL IS NO LONGER IN PRODUCTION, CROSSED OUT PARTS ARE UNAVAILABLE**

PARTS LIST

ITEM #	QTY	DESCRIPTION	PART #	NOTES
01	1	FLANGE CAP	020603	
02	1	CLUTCH GEAR	050402	
03	1	DIFFERENTIAL CASE	040505	
04	1	RETURN SPRINGS (PK OF 4)	150101SP	
05	1	RETAINING PIN SET (PK OF 2)	120102SP	
*	1	RETAINING PIN SET (PK OF 2)	120302SP	
06	1	LONG CROSS SHAFT	060403	
07	2	SHORT CROSS SHAFT	060303	
08	1	PISTON	040103SP	
09	1	BONDED SEAL	160701SP	
10	1	CYLINDER CAP	030410	
11	1	SEAL HOUSING O-RINGS (PK OF 2)	160205SP	1
12	1	CYL CAP RETAINING BOLT (PK OF 8)	200205SP	
13	1	LOCKING TAB (8mm) (PK OF 8)	150401SP	
14	1	TAPERED ROLLER BEARING	160101	2
15	1	SEAL HOUSING	080301SP	
16	1	SHIM KIT	SHK004	
17	1	SPLINED SIDE GEAR	SEE NOTE	3
18	1	PINION THRUST WASHER (PK OF 4)	151101SP	
19	4	PINION GEAR	SEE NOTE	3
20	1	SPIDER BLOCK	070404	
21	1	THRUST BLOCK	110202SP	
22	1	SIDE GEAR	SEE NOTE	3
23	1	S GEAR THRUST WASHER (PK OF 2)	151003SP	
*	1	BULKHEAD FITTING KIT (O-RING TYPE)	170111	
*	1	PUSH-IN FITTING (5mm to 1/8"BSPP)	170201SP	
*	1	AIR LINE (5mm DIA X 6m LONG)	170301SP	
*	1	SOLENOID VALVE (12V)	180103	
*	1	SWITCH	180209SP	
*	1	SWITCH COVER (REAR)	180211SP	
*	1	SWITCH COVER (FRONT)	180210SP	
*	1	CABLE TIE (PK OF 25)	180305	
*	1	OPERATING & SERVICE MANUAL	210200	
*	1	INSTALLATION GUIDE	210241	

* *Not illustrated in exploded view*

NOTES

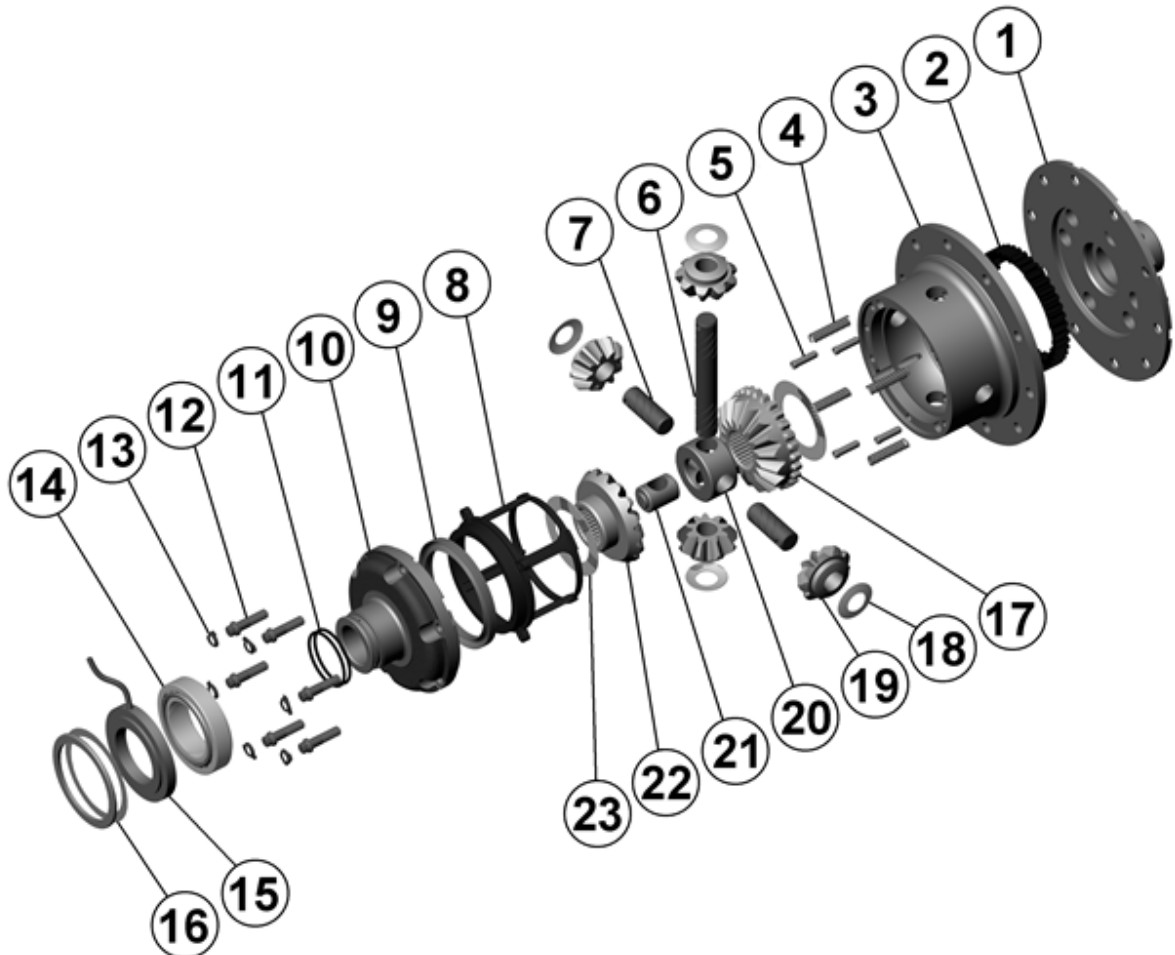
- 1 For replacement O-rings use only BS132 Viton 75.
- 2 For replacement bearing use Timken part # LM104949 / LM104912.
- 3 Available only as complete 6 gear set # 728B084.

RD41

Mitsubishi Jeep,RR**

****THIS MODEL IS NO LONGER IN PRODUCTION, CROSSED OUT PARTS ARE UNAVAILABLE**

EXPLODED DIAGRAM



SPECIFICATIONS

Axle Spline	19 tooth, Ø31.5mm [1.24"]
Ratio Supported	All
Ring Gear ID	141.3mm [5.56"]
Ring Gear Bolts	10 bolts on Ø168mm [6.63"]