

RD43

Dana 60HD,C-clip,35 SPL,4.10 & DN

****THIS MODEL WAS SUPERSEDED BY RD169, CROSSED OUT PARTS NOT AVAILABLE**

PARTS LIST

ITEM #	QTY	DESCRIPTION	PART #	NOTES
01	1	FLANGE CAP	021502	
02	1	CLUTCH GEAR	050401	
03	1	DIFFERENTIAL CASE	011704	
04	1	RETURN SPRINGS (PK OF 4)	150101SP	
05	1	RETAINING PIN SET (PK OF 4)	120301SP	
*	1	SOCKET HEAD SCREW	200506	
*	1	LOCK WASHER	4581046	
*	1	PIN WITHDRAWAL TOOL	1201T	
06	1	LONG CROSS SHAFT	060702	
07	1	PISTON	040501SP	
08	1	BONDED SEAL	160703SP	
09	1	CYLINDER CAP	030803SP	
10	1	SEAL HOUSING O-RING (PK OF 2)	160207SP	1
11	1	CYL CAP RETAINING BOLT (PK OF 8)	200205SP	
12	1	LOCKING TAB (8mm) (PK OF 8)	150401SP	
13	1	TAPERED ROLLER BEARING	160107	2
14	1	SEAL HOUSING KIT	080701SP	
15	1	SHIM KIT	SHK001	
*	1	MASTER SHIM	150330	
16	1	SPLINED SIDE GEAR	SEE NOTE	3
17	2	PINION GEAR	SEE NOTE	3
18	1	PINION THRUST WASHER (PK OF 4)	151104SP	
19	1	SIDE GEAR	SEE NOTE	3
20	1	S GEAR THRUST WASHER (PK OF 2)	151004SP	
*	1	BULKHEAD FITTING KIT (O-RING TYPE)	170111	
*	1	PUSH-IN FITTING (5mm to 1/8"BSPP)	170201SP	
*	1	AIR LINE (5mm DIA X 6m LONG)	170301SP	
*	1	SOLENOID VALVE (12V)	180103	
*	1	SWITCH	180209SP	
*	1	SWITCH COVER (REAR)	180211SP	
*	1	CABLE TIE (PK OF 25)	180305	
*	1	OPERATING & SERVICE MANUAL	210200	
*	1	INSTALLATION GUIDE	210243	

* *Not illustrated in exploded view*

NOTES

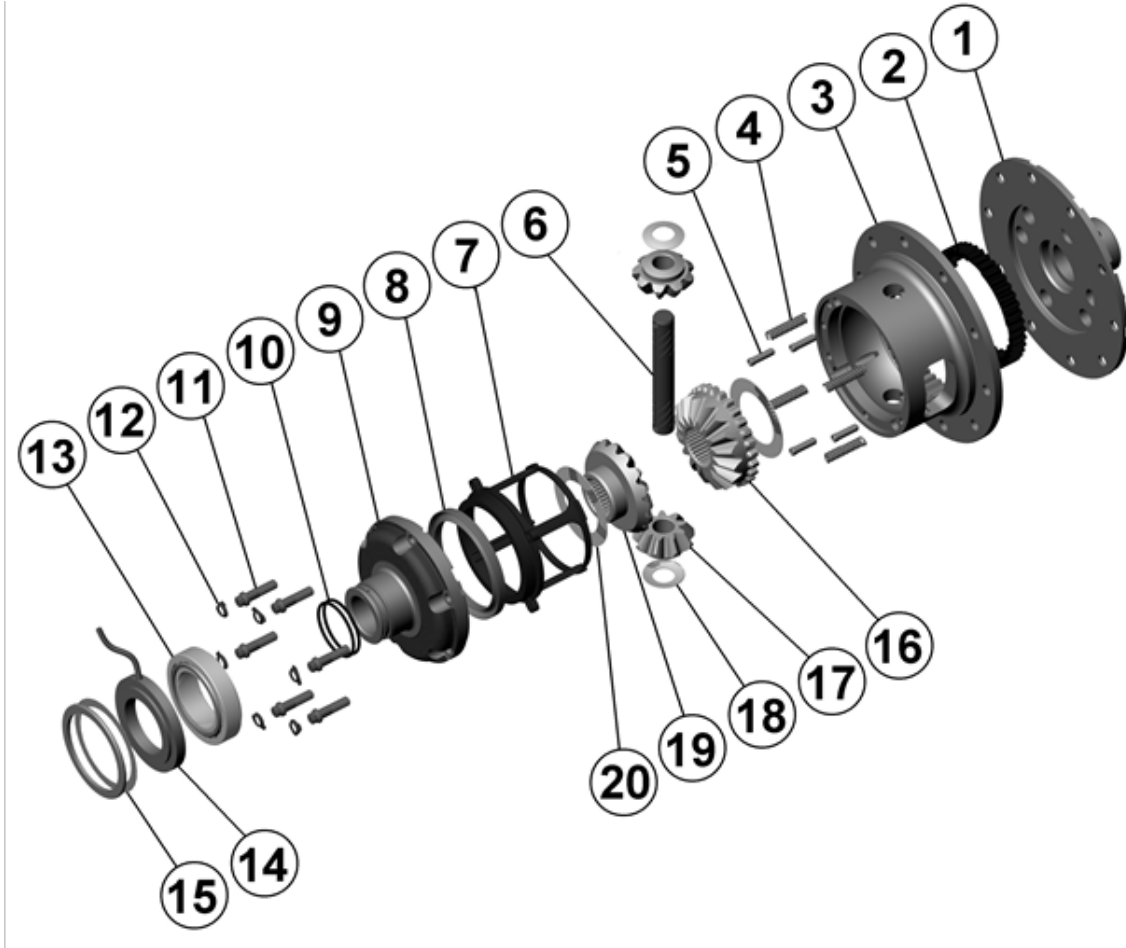
- 1 For replacement O-rings use only BS136 Viton 75.
- 2 For replacement bearing use Timken part # 387A / 382A.
- 3 Available only as complete 4 gear set #728E014C
- For ratios of 4.56:1 and up refer to RD42 ([Section 2.42](#)).
- For Dana 60HD non C-clip model refer to RD167 ([Section 2.167](#)).

RD43

Dana 60HD, C-clip, 35 SPL, 4.10 & DN

****THIS MODEL WAS SUPERSEDED BY RD169, CROSSED OUT PARTS NOT AVAILABLE**

EXPLODED DIAGRAM



SPECIFICATIONS

Axle Spline	35 tooth, Ø38.1mm [1.50"]
Ratio Supported	4.10:1 & down
Ring Gear ID	162.0mm [6.38"]
Ring Gear OD	248mm [9.75"]
Ring Gear Bolts	12 bolts on Ø191mm [7.50"]
Ring Gear Torque	149Nm [110 ft-lb]
Backlash	0.15-0.25mm [0.006-0.010"]
Bearing Cap Torque	108Nm [80 ft-lb]

ARB Corporation Ltd • 42-44 Garden St Kilsyth VIC 3137 Australia
ARB 4X4 Accessories USA • 720 SW 34th St Renton WA 98057 USA
Australia & International Customer Service • +61 3 9761 6622
North America Customer Service • Toll Free 866 293 9078
www.arb.com.au (AUS & Int) www.arbusa.com (N. America)