

**RD44**

Isuzu,RR,26 SPL

**\*\*THIS MODEL WAS SUPERSEDED BY RD213, CROSSED OUT PARTS NOT AVAILABLE**

### PARTS LIST

ITEM #	QTY	DESCRIPTION	PART #	NOTES
01	1	FLANGE CAP	022101	
02	1	CLUTCH GEAR	050102	
03	1	DIFFERENTIAL CASE	010506	
04	1	RETURN SPRINGS (PK OF 4)	150101SP	
05	1	RETAINING PIN SET (PK OF 2)	120102SP	
*	1	RETAINING PIN SET (PK OF 2)	120302SP	
06	4	SHORT CROSS SHAFT	060303	
07	1	S GEAR THRUST WASHER (PK OF 2)	151003SP	
08	1	PISTON	040103SP	
09	1	BONDED SEAL	160701SP	
10	1	CYLINDER CAP	030411	
11	1	SEAL HOUSING O-RINGS (PK OF 2)	160205SP	1
12	1	CYL CAP RETAINING BOLT (PK OF 8)	200205SP	
13	1	LOCKING TAB (8mm) (PK OF 8)	150401SP	
14	1	TAPERED ROLLER BEARING	NOT SUPPLIED	
15	1	SEAL HOUSING	081001SP	
16	1	SHIM KIT	SHK005	
*	1	MASTER SHIM	150341	
17	1	SPLINED SIDE GEAR	SEE NOTE	2
18	1	PINION THRUST WASHER (PK OF 4)	151101SP	
19	4	PINION GEAR	SEE NOTE	2
20	1	SPIDER BLOCK	070101	
21	1	THRUST BLOCK	110507SP	
22	1	SIDE GEAR	SEE NOTE	2
*	1	BULKHEAD FITTING KIT (O-RING TYPE)	170111	
*	1	PUSH-IN FITTING (5mm to 1/8"BSPP)	170201SP	
*	1	AIR LINE (5mm DIA X 6m LONG)	170301SP	
*	1	SOLENOID VALVE (12V)	180103	
*	1	SWITCH	180209SP	
*	1	SWITCH COVER (REAR)	180211SP	
*	1	CABLE TIE (PK OF 25)	180305	
*	1	OPERATING & SERVICE MANUAL	210200	
*	1	INSTALLATION GUIDE	210244	

\* *Not illustrated in exploded view*

### NOTES

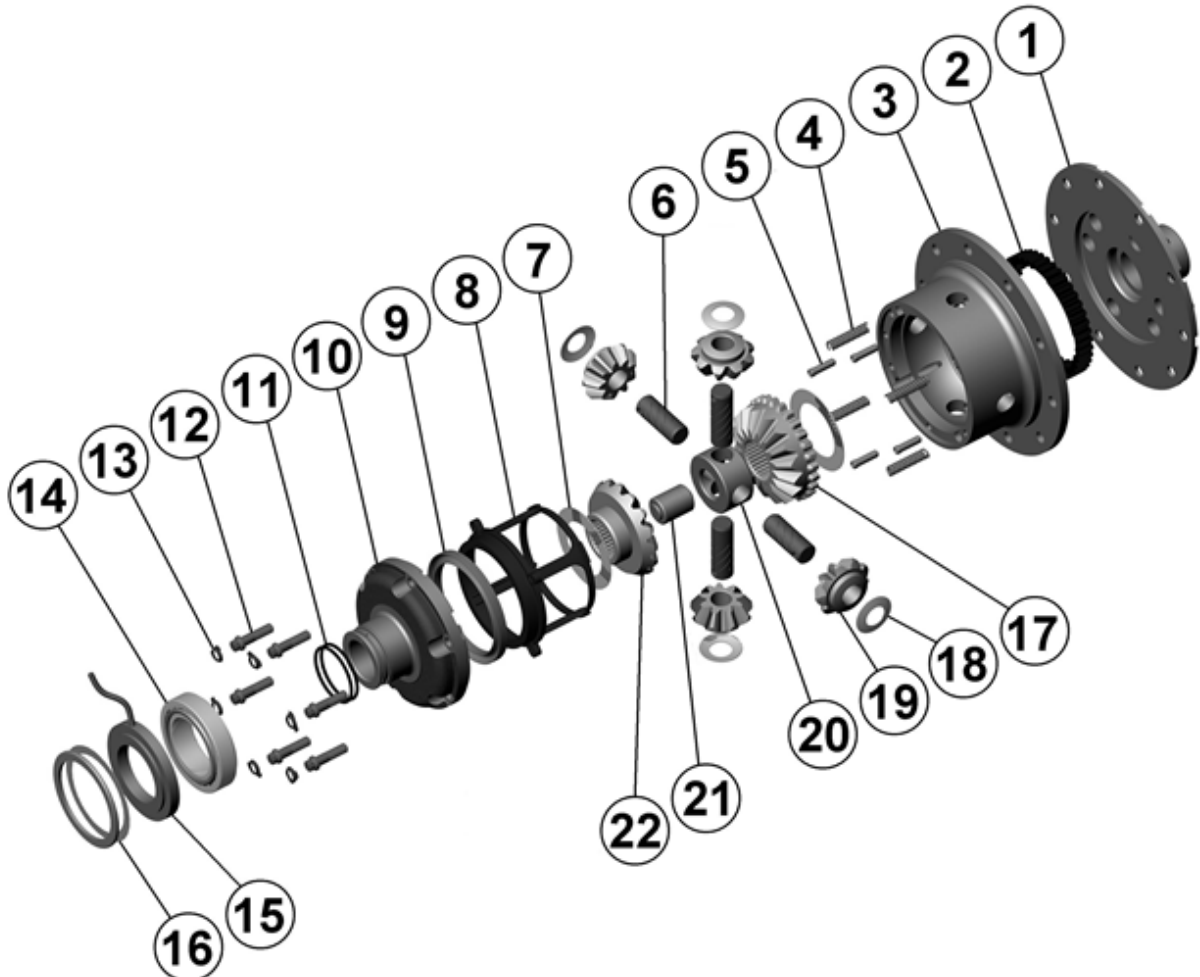
- 1 For replacement O-rings with cross section diameter of 2.62mm [0.103"] use only BS132 Viton 75 (ARB # 160205). For replacement O-rings with cross section diameter of 1.78mm [0.070"] (older models) use only BS031 Viton 75 (ARB # 160209).
- 2 Available only as complete 6 gear set # ~~728B091~~
- For information on RD44 models with 4 cylinder cap bolts, contact ARB.

**RD44**

Isuzu,RR,26 SPL

**\*\*THIS MODEL WAS SUPERSEDED BY RD213, CROSSED OUT PARTS NOT AVAILABLE**

### EXPLODED DIAGRAM



### SPECIFICATIONS

Axle Spline	26 tooth, Ø33.5mm [1.32"]
Ratio Supported	All
Ring Gear ID	138.0mm [5.43"]
Ring Gear Bolts	12 bolts on Ø165mm [6.50"]