

RD50

Dana 50,30 SPL

****THIS MODEL WAS SUPERSEDED BY RD158, CROSSED OUT PARTS NOT AVAILABLE**

PARTS LIST

| ITEM # | QTY | DESCRIPTION | PART # | NOTES |
|--------|-----|------------------------------------|----------|-------|
| 01 | 1 | FLANGE CAP | 022701 | |
| 02 | 1 | CLUTCH GEAR | 050102 | |
| 03 | 1 | DIFFERENTIAL CASE | 010603 | |
| 04 | 1 | RETURN SPRINGS (PK OF 4) | 150101SP | |
| 05 | 1 | RETAINING PIN SET (PK OF 2) | 120102SP | |
| * | 1 | RETAINING PIN SET (PK OF 2) | 120302SP | |
| 06 | 1 | LONG CROSS SHAFT | 060103 | |
| 07 | 2 | SHORT CROSS SHAFT | 060303 | |
| 08 | 1 | PISTON | 040103SP | |
| 09 | 1 | BONDED SEAL | 160701SP | |
| 10 | 1 | CYLINDER CAP | 030410 | |
| 11 | 1 | SEAL HOUSING O-RINGS (PK OF 2) | 160205SP | 1 |
| 12 | 1 | CYL CAP RETAINING BOLT (PK OF 8) | 200205SP | |
| 13 | 1 | LOCKING TAB (8mm) (PK OF 8) | 150401SP | |
| 14 | 1 | TAPERED ROLLER BEARING | 160112 | 2 |
| 15 | 1 | SEAL HOUSING KIT | 080302SP | |
| 16 | 1 | SHIM KIT | SHK009 | |
| * | 1 | MASTER SHIM | 150305 | |
| 17 | 1 | SPLINED SIDE GEAR | SEE NOTE | 3 |
| 18 | 1 | PINION THRUST WASHER (PK OF 4) | 151101SP | |
| 19 | 4 | PINION GEAR | SEE NOTE | 3 |
| 20 | 1 | SPIDER BLOCK | 070101 | |
| 21 | 1 | SIDE GEAR | SEE NOTE | 3 |
| 22 | 1 | S GEAR THRUST WASHER (PK OF 2) | 151003SP | |
| * | 1 | BULKHEAD FITTING KIT (O-RING TYPE) | 170111 | |
| * | 1 | PUSH-IN FITTING (5mm to 1/8"BSPP) | 170201SP | |
| * | 1 | AIR LINE (5mm DIA X 6m LONG) | 170301SP | |
| * | 1 | SOLENOID VALVE (12V) | 180103 | |
| * | 1 | SWITCH | 180209SP | |
| * | 1 | SWITCH COVER (FRONT) | 180210SP | |
| * | 1 | CABLE TIE (PK OF 25) | 180305 | |
| * | 1 | OPERATING & SERVICE MANUAL | 210200 | |
| * | 1 | INSTALLATION GUIDE | 210250 | |

* *Not illustrated in exploded view*

NOTES

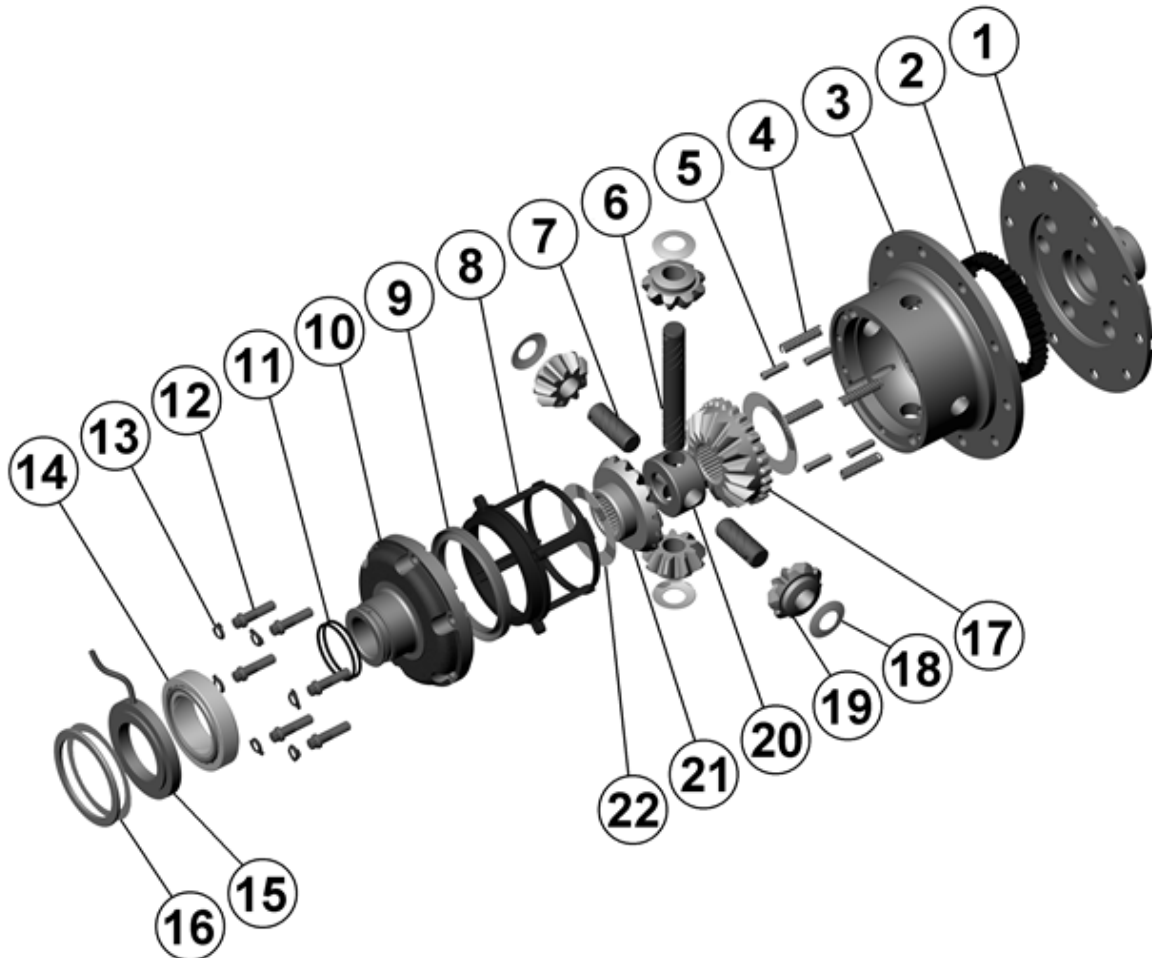
- 1 For replacement O-rings use only BS132 Viton 75.
- 2 For replacement bearing use Timken part # LM104949 / LM104911.
- 3 Available only as complete 6 gear set # 728B041.
- For Ford IFS installation refer to tech note ([Section 5.12](#)) for alternative to C-clip use.

RD50

Dana 50,30 SPL

****THIS MODEL WAS SUPERSEDED BY RD158, CROSSED OUT PARTS NOT AVAILABLE**

EXPLODED DIAGRAM



SPECIFICATIONS

| | |
|--------------------|----------------------------|
| Axle Spline | 30 tooth, Ø33.3mm [1.31"] |
| Ratio Supported | All |
| Ring Gear ID | 141.3mm [5.56"] |
| Ring Gear OD | 229mm [9.0"] |
| Ring Gear Bolts | 10 bolts on Ø168mm [6.61"] |
| Ring Gear Torque | 88Nm [65 ft-lb] |
| Backlash | 0.15-0.25mm [0.006-0.010"] |
| Bearing Cap Torque | 81Nm [60 ft-lb] |