

### RD197

### AAM 925 & 950|HIGH SPD

#### PARTS LIST

ITEM #	QTY	DESCRIPTION	PART #	NOTES
1	1	FLANGE CAP KIT	028612SP	
2	1	BONDED SEAL	160703SP	
3	1	CLUTCH GEAR & WAVESPRING KIT	050907SP	6
*	1	CLUTCH GEAR & RETURN SPRINGS KIT	050807SP	6
4	1	LONG CROSS SHAFT	061501SP	
5	1	SHORT CROSS SHAFT	061601SP	
6	2	SIDE GEAR THRUST WASHER	SEE NOTE	4
7	1	DIFFERENTIAL CASE (SUITS WAVESPRING ONLY)	013220SP	5
*	1	DIFFERENTIAL CASE (SUITS RETURN SPRINGS ONLY)	013212SP	5
8	1	RETAINING PIN SET (PK OF 4)	120601SP	
9	1	COUNTERSUNK SCREW (PK OF 2)	200214SP	
10	2	TAPERED ROLLER BEARING	NOT SUPPLIED	2
11	1	SEAL HOUSING KIT	080903SP	
12	1	SEAL HOUSING O-RINGS (PK OF 2)	160239-2	1
13	1	WAVESPRING	150707SP	6
*	1	RETURN SPRINGS KIT	150107SP	6
14	1	SPLINED SIDE GEAR	SEE NOTE	3
15	1	SPIDER BLOCK	070404SP	
16	4	PINION GEAR	SEE NOTE	3
17	4	PINION THRUST WASHER	SEE NOTE	4
18	1	SIDE GEAR	SEE NOTE	3
*	1	SEAL HOUSING BRACKET (LIVE AXLE)	220203	
*	1	SEAL HOUSING BRACKET (IFS)	220211	
*	1	BULKHEAD FITTING KIT (BANJO TYPE)	170114	7
*	1	AIR LINE (6mm DIA X 6m LONG)	170314	7
*	1	SOLENOID VALVE (12V)	180103	
*	1	SWITCH FR OR RR LOCKER	180225SP	
*	1	CABLE TIE (PK OF 25)	180305	
*	1	OPERATING & SERVICE MANUAL	210200	
*	1	INSTALLATION GUIDE	2102197	

\* *Not illustrated in exploded view*

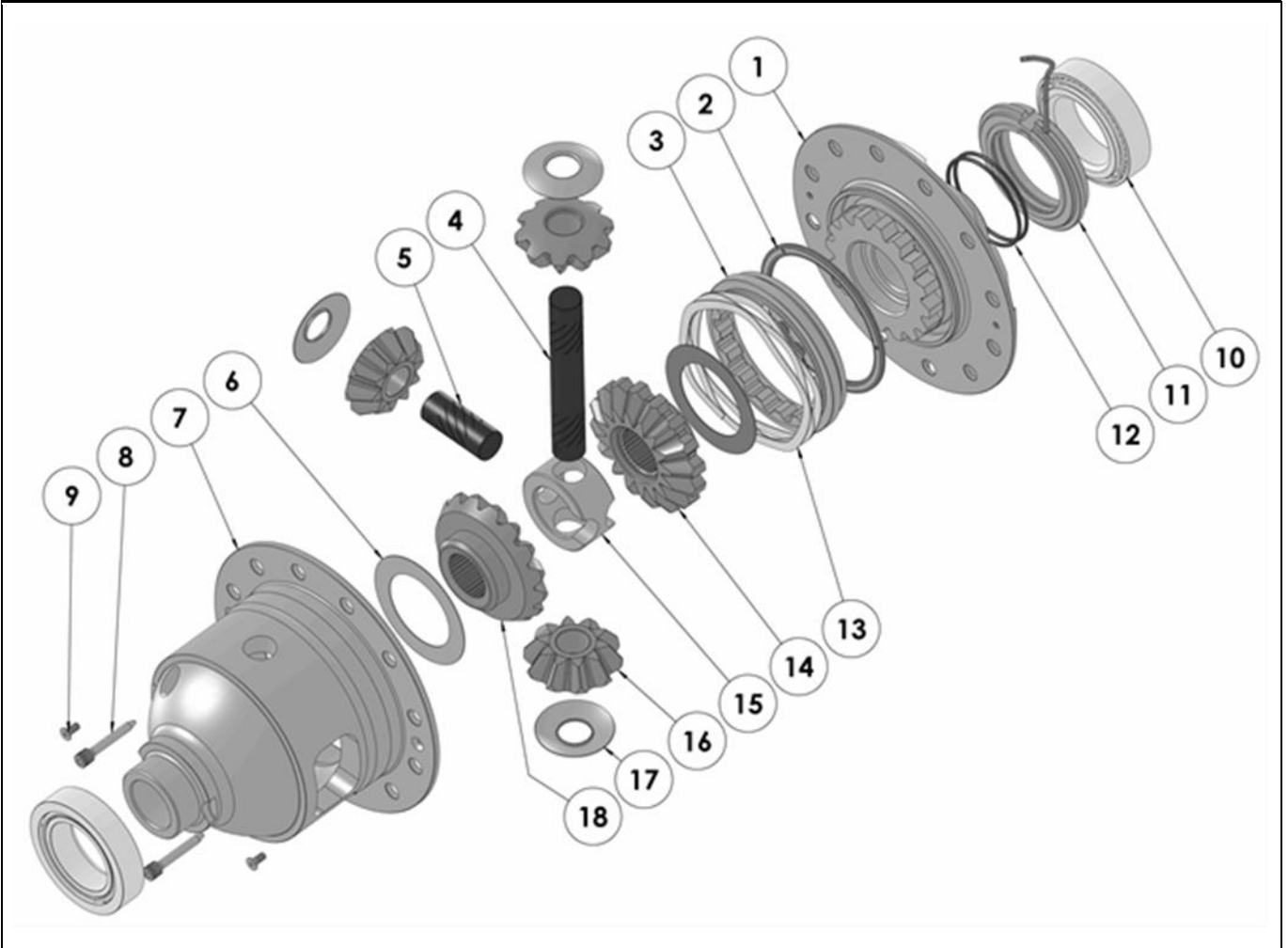
#### NOTES

- 1 For replacement O-rings use only BS140 Viton 75.
- 2 For replacement bearing use Timken part # JLM506849A-JLM506811.
- 3 Available only as complete 6 gear set # 728K131.
- 4 Available only as complete thrust washer kit #730K01.
- 5 Identify the spring type in your diff and order the correct diff case to replace.
- 6 Replace the spring and/or the corresponding clutch gear with the same type.  
*(If the spring type is changed, a matching diff case must also be used. See item 7.)*
- 7 All diffs produced before serial #17070001 came with 5mm air connection system. For information contact ARB.
- Ring gear bolts are M12 x 1.5mm left-hand thread, and must be removed in a clockwise direction.
- Use extreme care to protect the sealing faces of the flange cap when separating the two halves of the clamshell housing.

**RD197**

AAM 925 & 950|HIGH SPD

### EXPLODED DIAGRAM



### SPECIFICATIONS

Axle Spline	33 tooth, Ø34.8mm [1.37"]
Ratio Supported	High speed carrier-Ref R&P manufacturer
Ring Gear ID	152.9mm [6.02"]
Ring Gear OD	235mm [9.25"] / 241mm [9.50"]
Ring Gear Bolts	12 bolts on Ø181mm [7.13"]
Ring Gear Torque	88Nm [65 ft-lb]
Backlash	0.15-0.25mm [0.006-0.010"]
Bearing Cap Torque	108Nm [80 ft-lb]

ARB Corporation Ltd • 42-44 Garden St Kilsyth VIC 3137 Australia  
ARB 4X4 Accessories USA • 4810 D St. NW #103 Auburn WA 98001 USA  
Australia & International Customer Service • +61 3 9761 6622  
North America Customer Service • Toll Free 866 293 9078  
www.arb.com.au (AUS & Int) www.arbusa.com (N. America)

