

RD217

LR Discovery 3 + 4, FR, 29 SPL

PARTS LIST

| ITEM # | QTY | DESCRIPTION | PART # | NOTES |
|--------|-----|-----------------------------------|--------------|-------|
| 01 | 1 | BONDED SEAL | 160701SP | |
| 02 | 1 | CLUTCH GEAR & WAVESPRING KIT | 050902SP | |
| 03 | 4 | PINION THRUST WASHER | SEE NOTE | 4 |
| 04 | 4 | PINION GEAR | SEE NOTE | 2 |
| 05 | 1 | LONG CROSS SHAFT | 061302SP | |
| 06 | 2 | SHORT CROSS SHAFT | 061402SP | |
| 07 | 1 | SIDE GEAR | SEE NOTE | 2 |
| 08 | 1 | DIFFERENTIAL CASE | 013120SP | |
| 09 | 1 | COUNTERSUNK SCREW (PK OF 2) | 200213SP | |
| 10 | 1 | RETAINING PIN SET (PK OF 4) | 120601SP | |
| 11 | 1 | OE MASTER SHIM | NOT SUPPLIED | |
| 12 | 1 | SHIM KIT | SHK008 | |
| 13 | 1 | SEAL HOUSING KIT | 081824SP | |
| 14 | 1 | SEAL HOUSING O-RINGS (PK OF 2) | 160207-2 | 1 |
| 15 | 2 | TAPERED ROLLER BEARING | NOT SUPPLIED | 3 |
| 16 | 1 | FLANGE CAP KIT | 028520SP | |
| 17 | 1 | WAVESPRING | 150702SP | |
| 18 | 2 | SIDE GEAR THRUST WASHER | SEE NOTE | 4 |
| 19 | 1 | SPLINED SIDE GEAR | SEE NOTE | 2 |
| 20 | 1 | SPIDER BLOCK | 070503SP | |
| * | 1 | BULKHEAD FITTING KIT (BANJO TYPE) | 170114 | 5 |
| * | 1 | AIR LINE (6mm DIA X 6m LONG) | 170314 | 5 |
| * | 1 | SOLENOID VALVE (12V) | 180103 | |
| * | 1 | SWITCH FR LOCKER | 180223SP | |
| * | 1 | CABLE TIE (PK OF 25) | 180305 | |
| * | 1 | OPERATING & SERVICE MANUAL | 210200 | |
| * | 1 | INSTALLATION GUIDE | 2102217 | |

* *Not illustrated in exploded view*

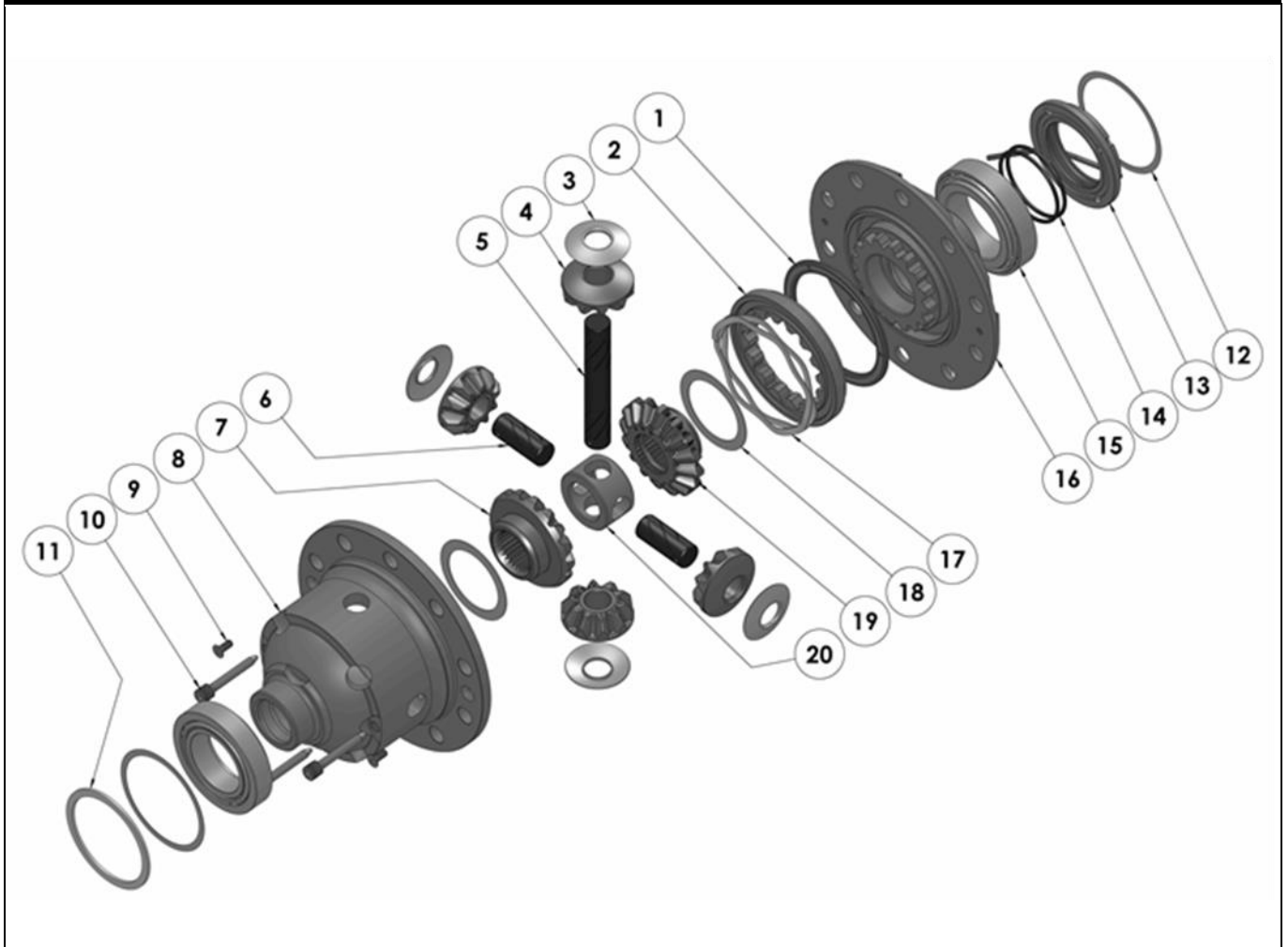
NOTES

- 1 For replacement O-rings use only BS136 Viton 75.
- 2 Available only as complete 6 gear set # 728J101
- 3 This differential uses 2 different sized carrier bearings:
Timken 32010X (ARB #160116) on the Flange Cap side;
Timken LM603049-LM603011 (ARB #160104) on the Case side.
- 4 Available only as complete thrust washer kit #730J01
- 5 All diffs produced before serial #17070001 came with 5mm air connection system. For information contact ARB.

RD217

LR Discovery 3 + 4, FR, 29 SPL

EXPLODED DIAGRAM



SPECIFICATIONS

| | |
|------------------|---|
| Axle Spline | 29 tooth, Ø31.5mm [1.24"] |
| Ratio Supported | All |
| Ring Gear ID | 118.0mm [4.64"] |
| Ring Gear OD | 190mm [7.48"] |
| Ring Gear Bolts | 10 bolts on Ø145.5mm [5.72"] |
| Ring Gear Torque | 135Nm [100 ft-lb] |
| Backlash | 0.35-0.45mm [0.013-0.017"] (measured off pinion) |

ARB Corporation Ltd ▪ 42-44 Garden St Kilsyth VIC 3137 Australia
ARB 4X4 Accessories USA ▪ 4810 D St. NW #103 Auburn WA 98001 USA
Australia & International Customer Service ▪ +61 3 9761 6622
North America Customer Service ▪ Toll Free 866 293 9078
www.arb.com.au (AUS & Int) www.arbusa.com (N. America)