

RD232

Toyota 8.9" RR, 32 SPL, 12 bolt RG, Shim Adjusted

PARTS LIST

ITEM #	QTY	DESCRIPTION	PART #	NOTES
01	1	FLANGE CAP KIT	027348SP	
02	1	BONDED SEAL	160702SP	
03	1	CLUTCH GEAR & WAVESPRING KIT	050906SP	
04	2	SIDE GEAR THRUST WASHER	SEE NOTE	3
05	1	SPLINED SIDE GEAR	SEE NOTE	2
06	2	SHORT CROSS SHAFT	060403SP	
07	1	SIDE GEAR	SEE NOTE	2
08	1	DIFFERENTIAL CASE	013048SP	
09	1	COUNTERSUNK SCREW (PK OF 2)	200213SP	
10	1	RETAINING PIN SET (PK OF 4)	120601SP	
11	1	SHIM KIT	SHK003	
12	1	SHIM KIT	SHK009	
13	1	SEAL HOUSING KIT	081814SP	
14	1	SEAL HOUSING O-RINGS (PK OF 2)	160207-2	1
15	1	TAPERED ROLLER BEARING	NOT SUPPLIED	4
16	1	WAVESPRING	150706SP	
17	1	LONG CROSS SHAFT	SEE NOTE	
18	1	SPIDER BLOCK	070201SP	
19	4	PINION GEAR	SEE NOTE	
20	4	PINION THRUST WASHER	SEE NOTE	3
*	1	BULKHEAD FITTING KIT (BANJO TYPE)	170114	5
*	1	AIR LINE (6mm DIA X 6m LONG)	170314	5
*	1	SOLENOID VALVE (12V)	180103	
*	1	SWITCH RR LOCKER	180224SP	
*	1	CABLE TIE (PK OF 25)	180305	
*	1	OPERATING & SERVICE MANUAL	210200	
*	1	INSTALLATION GUIDE	2102232	

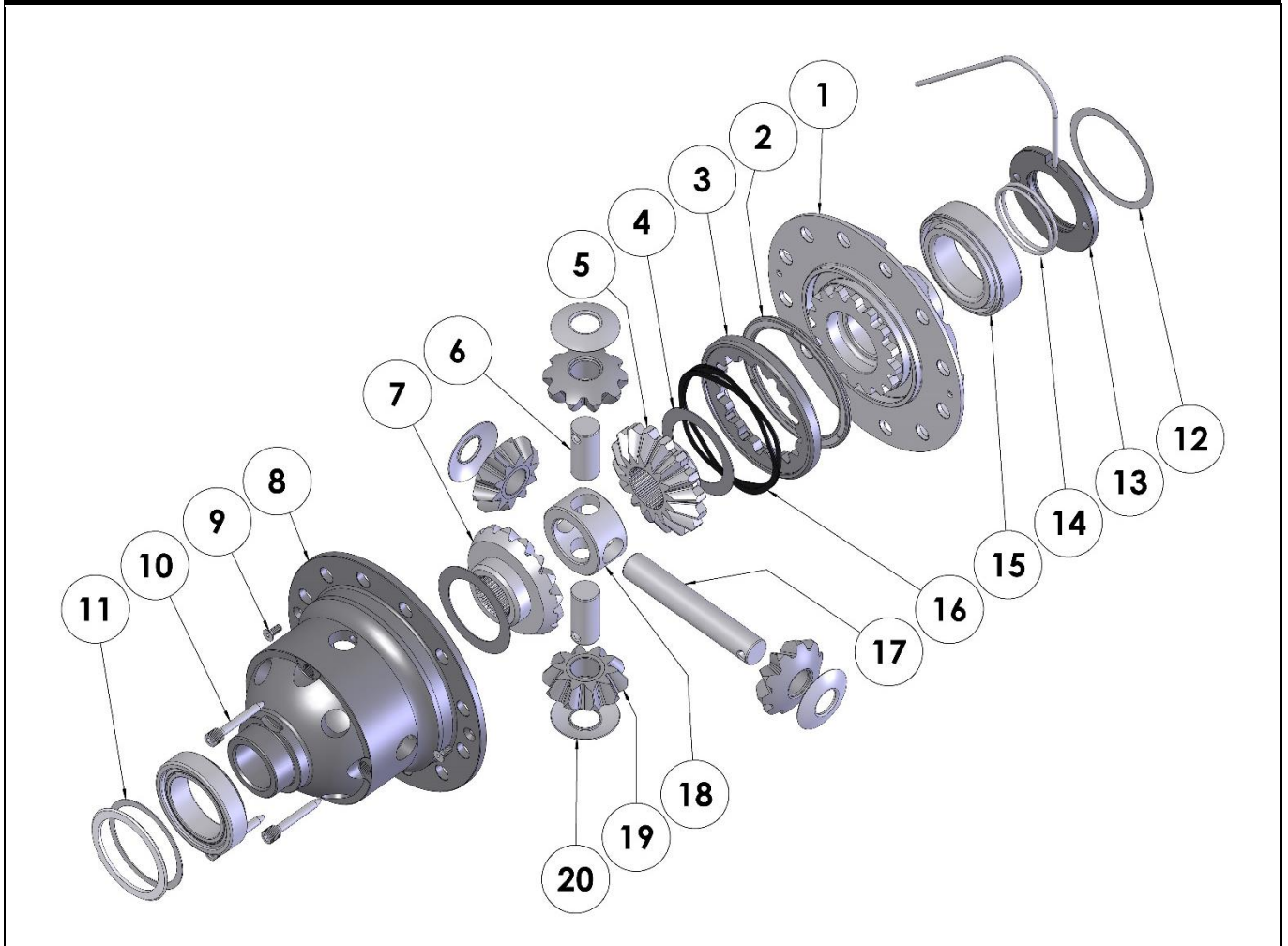
* *Not illustrated in exploded view*

NOTES

- 1 For replacement O-rings use only BS136 Viton 75.
- 2 Available only as complete 6 gear set # 728H201
- 3 Available only as complete thrust washer kit #730H01
- 4 Toyota OEM carrier bearing PN: 90366-T0068 (Flange Cap Side, LHS)
90366-T0071 (Diff Case Side, RHS)
For vehicles equipped with a factory locker the bearing from diff case side is difficult to remove without causing damage. We recommend sourcing a new bearing through a bearing wholesaler or through Toyota as a spare part before attempting removal.
- 5 All diffs produced before serial #17070001 came with 5mm air connection system. For information contact ARB.

RD232

Toyota 8.9" RR, 32 SPL, 12 bolt RG, Shim Adjusted

EXPLODED DIAGRAM**SPECIFICATIONS**

Axle Spline	32 tooth, Ø34.8mm [1.37"]
Ratio Supported	All
Ring Gear ID	140.95mm [5.55"]
Ring Gear OD	225mm [8.86"]
Ring Gear Bolts	12 bolts on Ø162.5mm [6.40"]
Ring Gear Torque	137Nm [101 ft-lb]
Backlash	0.15-0.25mm [0.006-0.010"]
Bearing Cap Torque	113Nm [83 ft-lb]

ARB Corporation Ltd ▪ 42-44 Garden St Kilsyth VIC 3137 Australia
ARB 4X4 Accessories USA ▪ 4810 D St. NW #103 Auburn WA 98001 USA
Australia & International Customer Service ▪ +61 3 9761 6622
North America Customer Service ▪ Toll Free 866 293 9078
www.arb.com.au (AUS & Int) www.arbusa.com (N. America)