

### RD249CE

Ford 10",40 SPL

### PARTS LIST

ITEM #	QTY	DESCRIPTION	PART #	NOTES
1	1	SEAL HOUSING KIT	081827SP	
2	1	SEAL HOUSING O-RINGS (PK of 2)	160248-2	1
3	1	M4 X 12mm CAP SCREW (PK of 10, incl LOCK TABS)	LTK002	2
4	1	LOCKING TAB KIT (PK of 10, incl M4 SCREWS)	LTK002	2
5	1	ARP RING GEAR BOLTS (PK of 10)	200216SP	3
6	1	FLANGE CAP KIT	027350SP	
7	1	CLUTCH GEAR O-RING – SMALL	160254	4
8	1	CLUTCH GEAR O-RING – LARGE	160255	5
9	1	CLUTCH GEAR & WAVESPRING KIT	050910SP	
10	4	PINION THRUST WASHER	SEE NOTE	7
11	4	PINION GEAR	SEE NOTE	6
12	4	SHORT CROSS SHAFT	060403SP	
13	1	SIDE GEAR	SEE NOTE	6
14	2	SIDE GEAR THRUST WASHER	SEE NOTE	7
15	1	DIFFERENTIAL CASE	012208SP	
16	1	M5 CSK SCREW (PK of 2)	200213SP	
17	1	RETAINING PIN (PK of 4)	120701SP	
18	2	TAPERED ROLLER BEARING	160107	8
19	1	SEAL HOUSING RETAINING CIRCLIP	150604	
20	2	SEAL HOUSING RETAINING BRACKET	220220	
21	1	ADJUSTER NUT	100106SP	
22	1	WAVESPRING	150704SP	
23	1	SPLINED SIDE GEAR	SEE NOTE	6
24	1	SPIDER BLOCK	070904SP	
*	1	ADJUSTER NUT LOCK TAB	220221	
*	1	BULKHEAD FITTING KIT (BANJO TYPE)	170114	
*	1	AIR LINE (6mm DIA X 6m LONG)	170314	
*	1	SOLENOID VALVE (12V)	180103	
*	1	SWITCH FR OR RR LOCKER	180225SP	
*	1	CABLE TIE (PK OF 25)	180305	
*	1	OPERATING & SERVICE MANUAL	210200	
*	1	INSTALLATION GUIDE	2102249CE	

\* *Not illustrated in exploded view*

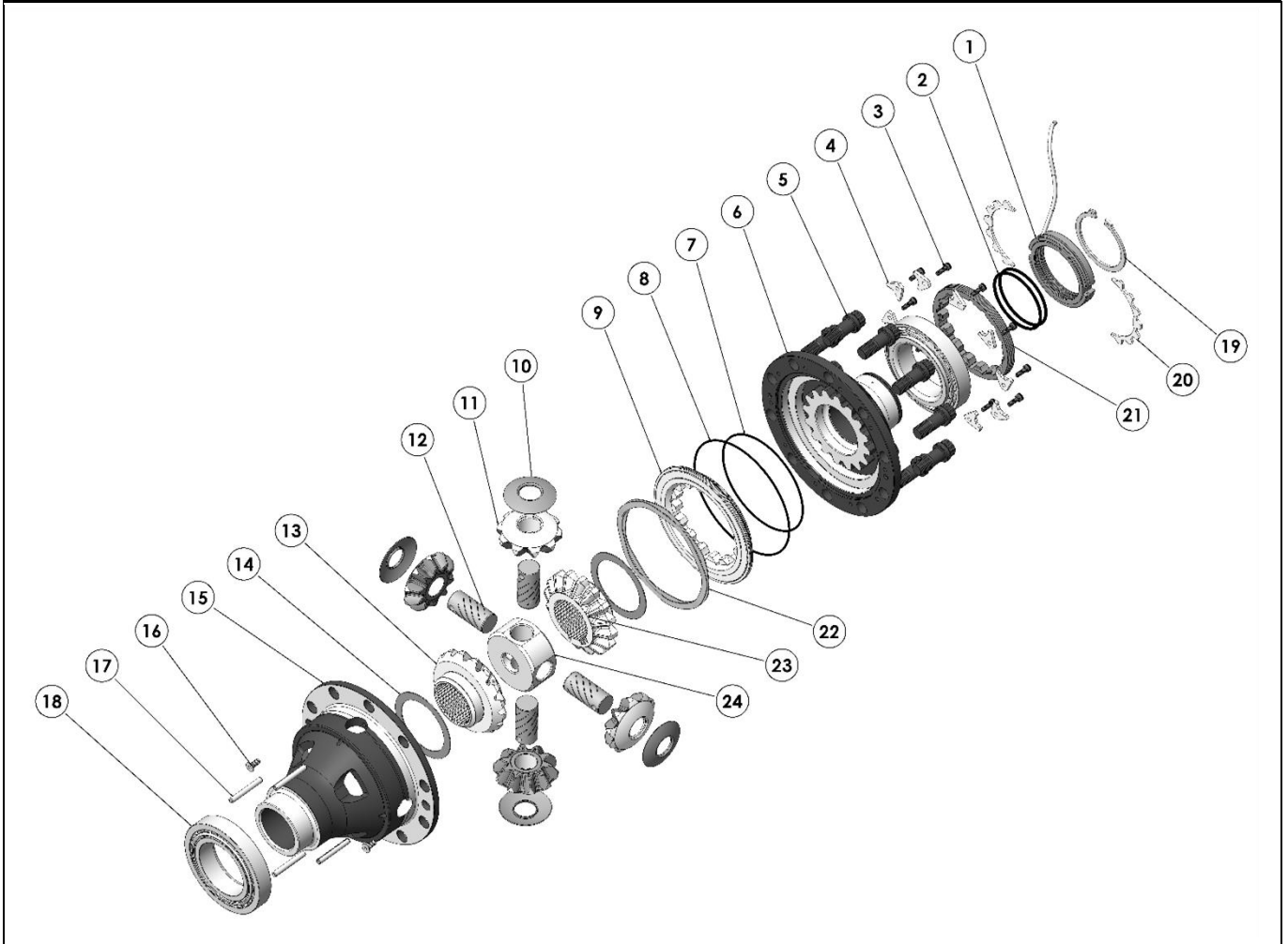
### NOTES

- 1 For replacement O-rings use only BS140 Viton 75.
- 2 Available only as complete kit.
- 3 ARP bolt #6AR1.200-1S.
- 4 For replacement O-ring use only BS045.
- 5 For replacement O-ring use only BS048.
- 6 Available only as complete 6 gear set #728H321.
- 7 Available only as complete thrust washer kit #730H03.
- 8 For replacement carrier bearing use Timken 387A-382A.
- RD249CE does not suit the OEM third member. Aftermarket third member with carrier bearing ID of 57.15mm [2.250"] and a bearing thickness of 21.00mm [0.827"] must be used.

**RD249CE**

Ford 10",40 SPL

### EXPLODED DIAGRAM



### SPECIFICATIONS

Axle Spline	40 tooth, Ø43.4mm [1.71"]
Ratio Supported	All
Ring Gear ID	127.0mm [5.00"]
Ring Gear OD	254mm [10"]
Ring Gear Bolts	10 bolts on Ø152mm [6.00"]
Ring Gear Torque	135Nm [100 ft-lb]

ARB Corporation Ltd • 42-44 Garden St Kilsyth VIC 3137 Australia  
ARB 4X4 Accessories USA • 4810 D St. NW #103 Auburn WA 98001 USA  
Australia & International Customer Service • +61 3 9761 6622  
North America Customer Service • Toll Free 866 293 9078  
[www.arb.com.au](http://www.arb.com.au) (AUS & Int) [www.arbusa.com](http://www.arbusa.com) (N. America)