

RD270

Ford 9.75",35 SPL

PARTS LIST

ITEM #	QTY	DESCRIPTION	PART #	NOTES
01	4	PINION THRUST WASHER	SEE NOTE	4
02	4	PINION GEAR	SEE NOTE	3
03	2	SHORT CROSS SHAFT	061601SP	
04	1	SIDE GEAR	SEE NOTE	3
05	2	SIDE GEAR THRUST WASHER	SEE NOTE	4
06	1	DIFFERENTIAL CASE	013238SP	
07	1	COUNTERSUNK SCREW (PK OF 2)	200215SP	
08	1	RETAINING PIN SET (PK OF 4)	120601SP	
09	1	SEAL HOUSING O-RINGS (PK OF 2)	160248-2	1
10	1	SEAL HOUSING KIT	082103SP	
11	1	SHIM KIT	SHK001	
*	1	MASTER SHIM	150330	
12	2	TAPERED ROLLER BEARING	NOT SUPPLIED	2
13	1	FLANGE CAP KIT	028604SP	
14	1	BONDED SEAL	160703SP	
15	1	CLUTCH GEAR K2 TYPE	050907SP	
16	1	WAVESPRING	150707SP	
17	1	SPLINED SIDE GEAR	SEE NOTE	3
18	1	SPIDER BLOCK	070402SP	
19	1	LONG CROSS SHAFT	061501SP	
*	1	BULKHEAD FITTING KIT (BANJO TYPE)	170114	
*	1	AIR LINE (6mm DIA X 6m LONG)	170314SP	
*	1	SOLENOID VALVE (12V)	180103	
*	1	SWITCH RR LOCKER	180224SP	
*	1	CABLE TIE (PK OF 25)	180305	
*	1	OPERATING & SERVICE MANUAL	210200	
*	1	INSTALLATION GUIDE	2102270	

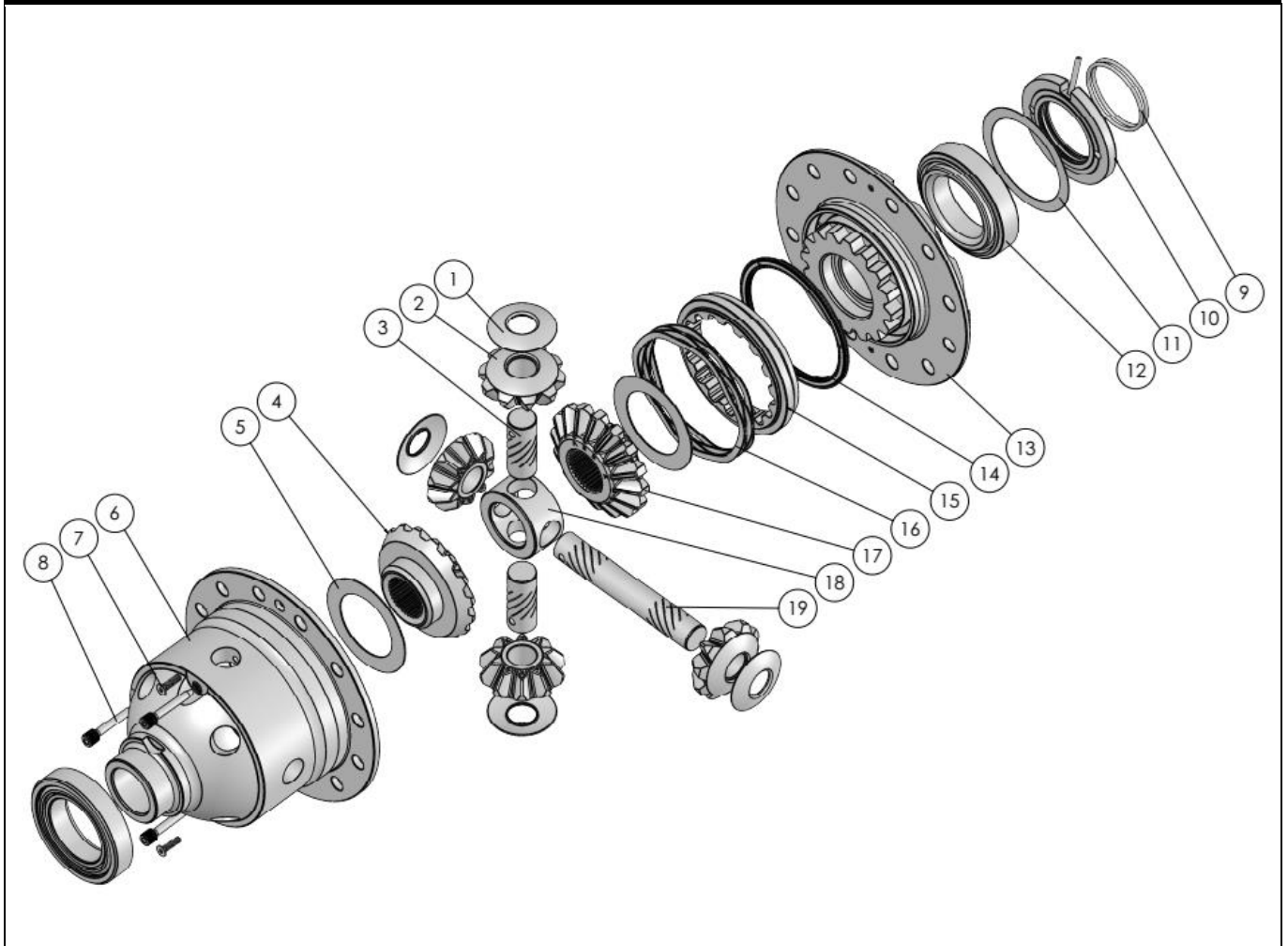
* *Not illustrated in exploded view*

NOTES

- 1 For replacement O-rings use only BS140 Viton 75.
- 2 For replacement bearing use Timken part # NP343847-372019.
- 3 Available only as complete 6 gear set #728K201.
- 4 Available only as complete thrust washer kit #730K01.

RD270

Ford 9.75",35 SPL

EXPLODED DIAGRAM**SPECIFICATIONS**

Axle Spline	35 tooth, Ø38.1mm [1.5"]
Ratio Supported	All
Ring Gear ID	154.94mm [6.1"]
Ring Gear OD	248mm [9.75"]
Ring Gear Bolts	12 bolts on Ø180.4mm [7.1"]
Ring Gear Torque	128Nm [95 ft-lb]
Backlash	0.15-0.25mm [0.006-0.010"]
Bearing Cap Torque	94Nm [70 ft-lb]

ARB Corporation Ltd ▪ 42-44 Garden St Kilsyth VIC 3137 Australia
ARB 4X4 Accessories USA ▪ 4810 D St. NW #103 Auburn WA 98001 USA
Australia & International Customer Service ▪ +61 3 9761 6622
North America Customer Service ▪ Toll Free 866 293 9078
www.arb.com.au (AUS & Int) www.arbusa.com (N. America)