

### RD275

### MITSUBISHI TRITON, REAR, 31 SPLINE

#### PARTS LIST

ITEM #	QTY	DESCRIPTION	PART #	NOTES
01	1	FLANGE CAP KIT	027363SP	
02	1	BONDED SEAL	160702SP	
03	1	CLUTCH GEAR & WAVESPRING KIT	050906SP	
04	1	WAVESPRING	150706SP	
05	2	SIDE GEAR THRUST WASHER	SEE NOTE	1
06	1	SPLINED SIDE GEAR	SEE NOTE	2
07	4	PINION THRUST WASHER	SEE NOTE	1
08	4	PINION GEAR	SEE NOTE	2
09	2	SHORT CROSS SHAFT	060403SP	
10	1	LONG CROSS SHAFT	060204SP	
11	1	SIDE GEAR	SEE NOTE	2
12	1	DIFFERENTIAL CASE	013064SP	
13	1	COUNTERSUNK SCREW (PK OF 2)	200213SP	
14	1	RETAINING PIN SET (PK OF 4)	120601SP	
15	-	TAPERED ROLLER BEARING	NOT SUPPLIED	4
16	1	SHIM KIT	SHK013	
17	1	SHIM KIT	SHK008	
18	1	SEAL HOUSING O-RINGS (PK OF 2)	160207-2	3
19	1	SEAL HOUSING KIT	081824SP	
20	-	TAPERED ROLLER BEARING	NOT SUPPLIED	
21	1	SPIDER BLOCK	070201SP	
*	1	BULKHEAD SEAT	110403SP	
*	1	WASHER FLAT M6X25X2.8	4584379	
*	1	BULKHEAD FITTING (BANJO TYPE)	170114	
*	1	AIR LINE (6mm DIA X 6m LONG)	170314SP	
*	1	SOLENOID VALVE (12V)	180103	
*	1	SWITCH RR LOCKER	180224SP	
*	1	CABLE TIE (PK OF 25)	180305	
*	1	OPERATING & SERVICE MANUAL	210200	
*	1	INSTALLATION GUIDE	2102275	
*	1	DIFF INSTALLATON RECORD	215762A	

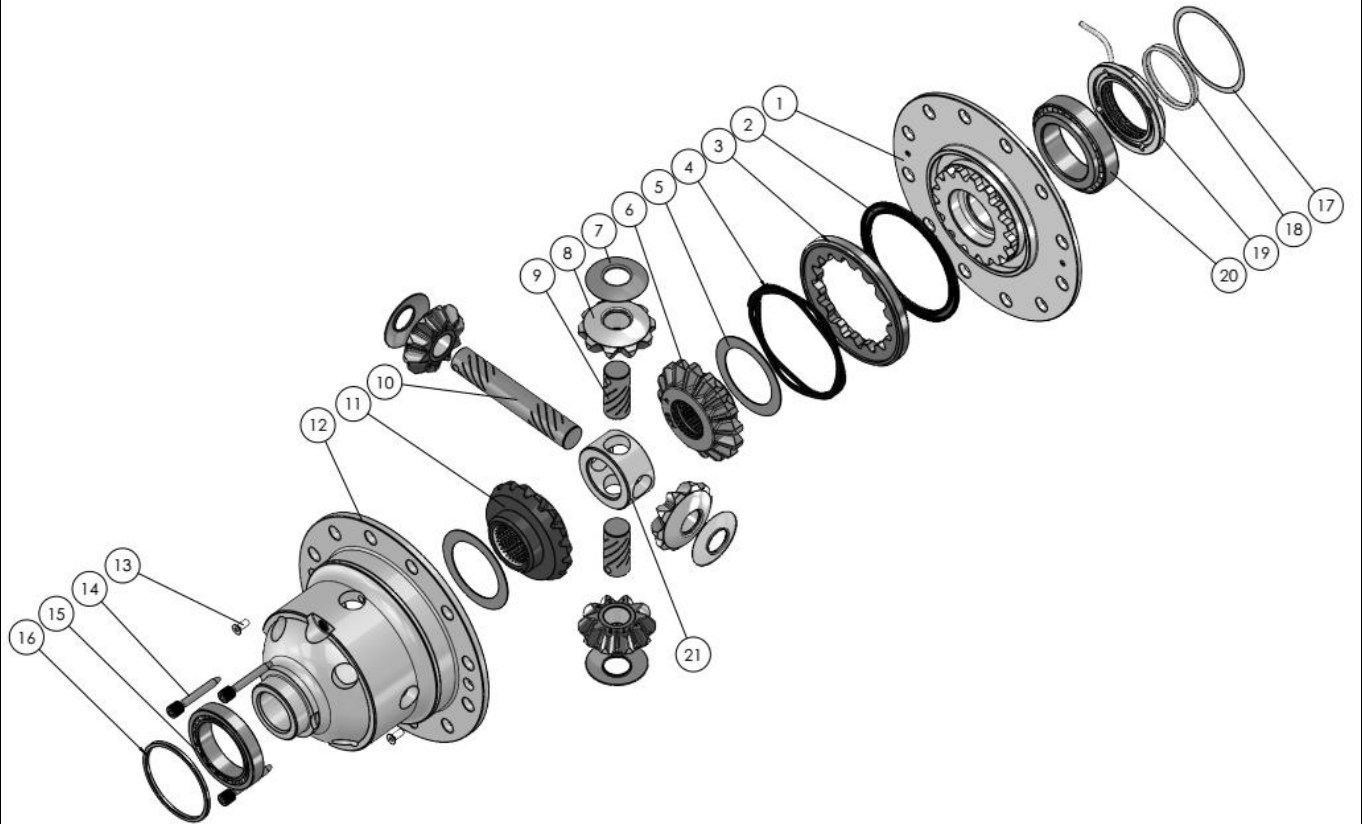
\* *Not illustrated in exploded view*

#### NOTES

- 1 Available only as complete thrust washer kit #730H01
- 2 Available only as complete 6 gear set # 728H211
- 3 For replacement O-rings use only BS136 Viton 75.
- 4 For Triton equipped with a factory locker, the bearing from diff case side is difficult to be removed without damaging it. Source the bearing (Part no. NSK HR32910J or Mitsubishi part no. 38440A010P) through bearing wholesaler or Mitsubishi as a spare bearing before attempting removal.

**RD275**

MITSUBISHI TRITON, REAR, 31 SPLINE

**EXPLODED DIAGRAM****SPECIFICATIONS**

Axle Spline	31 tooth, Ø33.6mm [1.32"]
Ratio Supported	All
Ring Gear ID	144.97mm [5.71"]
Ring Gear OD	230mm [9.06"]
Ring Gear Bolts	12 bolts on Ø175mm [6.89"]
Ring Gear Bolt Size	M12
Ring Gear Torque	152Nm [112 ft-lb]
Backlash	0.13-0.18mm [0.005-0.007"]
Bearing Cap Torque	99Nm Nm [73 ft-lb]

ARB Corporation Ltd • 42-44 Garden St Kilsyth VIC 3137 Australia  
ARB 4X4 Accessories USA • 4810 D St. NW #103 Auburn WA 98001 USA  
Australia & International Customer Service • +61 3 9761 6622  
North America Customer Service • Toll Free 866 293 9078  
www.arb.com.au (AUS & Int) www.arbusa.com (N. America)

