

RD276

KIA TASMAN, REAR, 36 SPLINE

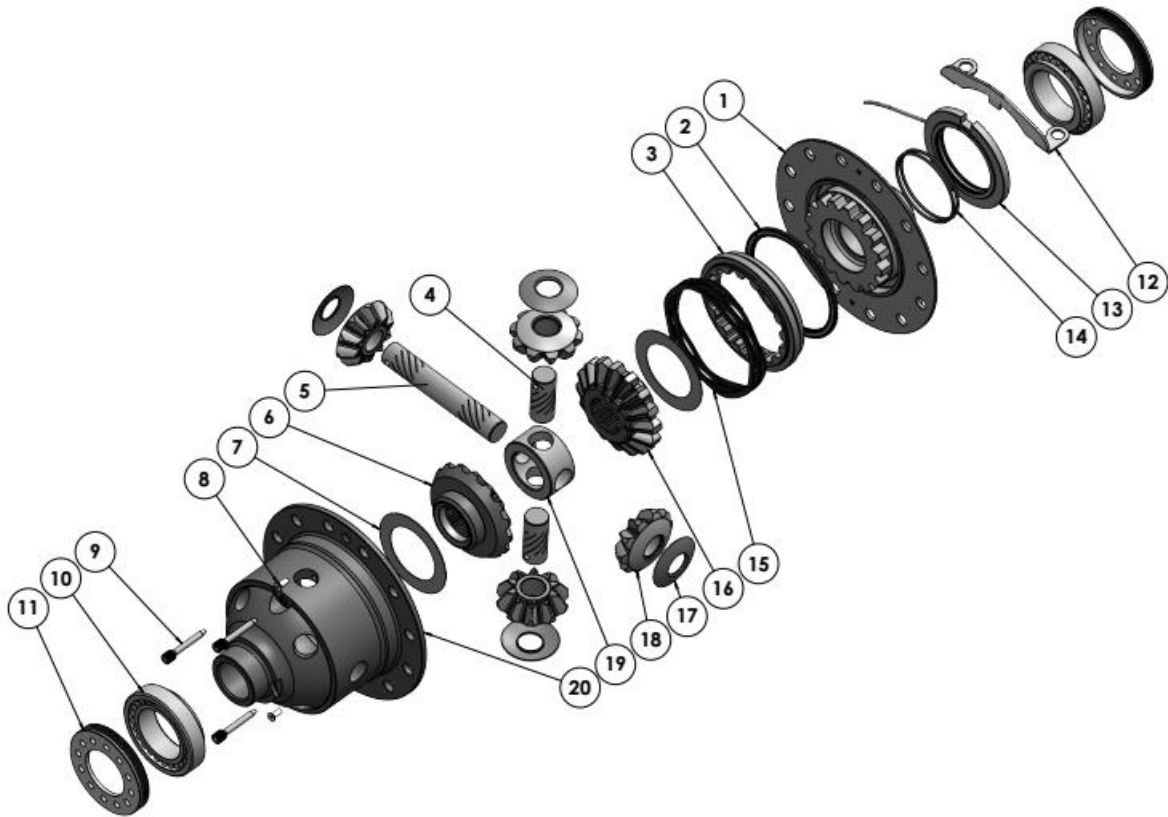
PARTS LIST

ITEM #	QTY	DESCRIPTION	PART #	NOTES
01	1	FLANGE CAP KIT	028628SP	
02	1	BONDED SEAL	160703SP	
03	1	CLUTCH GEAR & WAVESPRING KIT	050907SP	
04	2	SHORT CROSS SHAFT (K TYPE)	061602SP	
05	1	LONG CROSS SHAFT (K TYPE)	061502SP	
06	1	SIDE GEAR	SEE NOTE	2
07	2	SIDE GEAR THRUST WASHER	SEE NOTE	3
08	1	COUNTERSUNK SCREW (PK OF 2)	200213SP	
09	1	RETAINING PIN SET (PK OF 4)	120601SP	
10	2	TAPERED ROLLER BEARING	NOT SUPPLIED	
11	2	ADJUSTER NUT	NOT SUPPLIED	
12	1	SEAL HOUSING BRACKET	220239	
13	1	SEAL HOUSING KIT	082107SP	
14	1	SEAL HOUSING O-RINGS (PK OF 2)	160251-2	1
15	1	WAVESPRING	150707SP	
16	1	SPLINED SIDE GEAR	SEE NOTE	2
17	4	PINION THRUST WASHER	SEE NOTE	3
18	4	PINION GEAR	SEE NOTE	2
19	1	SPIDER BLOCK	070402SP	
20	1	DIFFERENTIAL CASE	013242SP	
*	1	BULKHEAD SEAT	110404SP	
*	1	BULKHEAD FITTING KIT (BANJO TYPE)	170114	
*	1	AIR LINE (6mm DIA X 6m LONG)	170314SP	
*	1	SOLENOID VALVE (12V)	180103	
*	1	SWITCH RR LOCKER	180224SP	
*	1	CABLE TIE (PK OF 25)	180305	
*	1	OPERATING & SERVICE MANUAL	210200	
*	1	INSTALLATION GUIDE	2102276	

* *Not illustrated in exploded view*

NOTES

- 1 For replacement O-rings use only BS149 Viton 75.
- 2 Available only as complete 6 gear set # 728K211
- 3 Available only as complete thrust washer kit #730K01

RD276**KIA TASMAN, REAR, 36 SPLINE****EXPLODED DIAGRAM****SPECIFICATIONS**

Axle Spline	36 tooth, Ø36.8mm [1.44"]
Ratio Supported	All
Ring Gear ID	148.96mm [5.86"]
Ring Gear OD	233.5mm [9.2"]
Ring Gear Bolts	12 bolts on Ø179mm [7.05"]
Ring Gear Torque	120Nm [89 ft-lb]
Backlash	0.15-0.20mm [0.006-0.008"]
Bearing Cap Torque	50Nm [37 ft-lb]

ARB Corporation Ltd ▪ 42-44 Garden St Kilsyth VIC 3137 Australia
ARB 4X4 Accessories USA ▪ 4810 D St. NW #103 Auburn WA 98001 USA
Australia & International Customer Service ▪ +61 3 9761 6622
North America Customer Service ▪ Toll Free 866 293 9078
www.arb.com.au (AUS & Int) www.arbusa.com (N. America)