

ARB AIR LOCKER *Air Operated Locking Differentials*

RDCEP & RDCPA Portable Air Compressor

| ITEM # | QTY | DESCRIPTION | PART # | NOTES |
|--------|-----|--------------------------------------|---------|-------|
| 01 | 1 | AIR FILTER COVER | 290502 | |
| 02 | 1 | AIR FILTER ELEMENT | 290503 | 3 |
| 03 | 7 | HEX FLANGE SCREW | 200404 | |
| 04 | 1 | AIR FILTER BASE | 290501 | |
| 05 | 4 | HEAD FIXING BOLT | 290214 | |
| 06 | 1 | INTAKE VALVE RETAINER | 290203 | |
| 07 | 1 | INTAKE VALVE SPRING | 150104 | |
| 08 | 1 | INTAKE VALVE INSERT | 290215 | |
| 09 | 1 | HEAD | 290201 | |
| 10 | 1 | INTAKE VALVE PLUNGER | 290202 | |
| 11 | 1 | HEAD O-RING | 160214 | |
| 12 | 1 | BARREL | 290309 | |
| * | - | BARREL SHIM (0.2mm) | 150501 | 5 |
| * | - | BARREL SHIM (0.4mm) | 150502 | 5 |
| 13 | 2 | PISTON RING | 290302 | |
| 14 | 1 | BACKING O-RING | 160213 | |
| 15 | 1 | MANIFOLD RETAINING BOLT (M8 X 105mm) | 6151174 | |
| 16 | 1 | MANIFOLD RETAINING BOLT SEAL | 160601 | |
| 17 | 1 | MANIFOLD - RDCP | 290208 | 1 |
| 17A | 1 | MANIFOLD - RDCPA | 290209 | 2 |
| 18 | 1 | EXHAUST O-RING | 160216 | |
| 19 | 1 | EXHAUST VALVE SPRING | 150103 | |
| 20 | 1 | EXHAUST VALVE PLUNGER | 290205 | |
| 21 | 1 | MANIFOLD O-RING | 160212 | 4 |
| 22 | 1 | PRESSURE SWITCH | CO35 | 1 |
| 23 | 2 | ELBOW (1/4" MALE/FEMALE) | 170207 | 1 |
| 24 | 1 | PUMP-UP KIT (RDCP) | PUK | 1 |
| 24A | 1 | PUMP-UP KIT (RDCPA) | PUK2 | 2 |
| 25 | 1 | COVER PLATE | 290404 | |
| 26 | 1 | SOCKET HEAD CAP SCREW (M6 X 16mm) | 200208 | |
| 27 | 1 | PISTON/CONNECTING ROD ASSEMBLY | 290310 | |
| 28 | 1 | COUNTERWEIGHT | 290402 | |
| 29 | 1 | MOTOR ASSEMBLY (12V) | 290412 | |
| 30 | 1 | MOUNTING BRACKET ASSEMBLY | 290604 | |
| 31 | 1 | CUP HEAD BOLT (M6 X 25mm) | 6151082 | |
| 32 | 6 | FLANGE NUT M6 | 6151173 | |
| 33 | 1 | MOUNTING PLATE | 290607 | |
| 34 | 5 | COUNTERSUNK SCREW (M6 X 12mm) | 6151171 | |
| * | 1 | WIRING LOOM (RDCP) | 180402 | 1 |
| * | 1 | WIRING LOOM (RDCPA) | 180406 | 2 |
| * | 1 | RELAY (12V, 40A) | CO42 | 1 |
| * | 1 | CARRY CASE | 270102 | |
| * | 1 | TYRE PRESSURE GAUGE | 171101 | 1 |
| * | 1 | INFLATION ACCESSORY KIT | 171102 | 1 |

* *Not illustrated in exploded view.*

Specs:

| | |
|-----------------|---|
| Voltage | 12 Volts |
| Current Draw | 12A (No-Load), 18A (Load) |
| Air Flow | 33.0L/min @ 0kPa [1.17CFM @ 0psi] 26.4L/min @ 200kPa [0.93CFM @ 29psi] |
| Total Weight | 6.4kg [14.1lbs] (RDCP) 6.1kg [13.4lbs] (RDCPA) |
| Size | 208mm x 440mm x 238mm [8.19" x 17.32" x 9.37"] |
| Manifold Port | 1/4" npt [RDCP] 1/8" bspt [RDCPA] |
| Pressure Switch | Open 690kPa [100psi] Closed 490kPa [70psi] |
| Hose Length | 6m [20ft] |

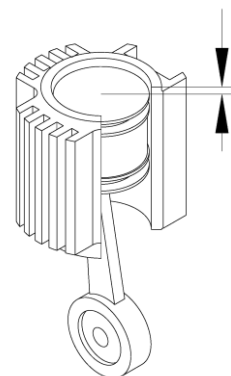
Notes:

- Used on RDCP only.
- Used on RDCPA only.
- The air filter should be cleaned regularly. To do this, unclip the black cover (01) and remove the element (02). Wash in hot, soapy water, rinse and let dry completely. Reinsert the element into the base (SMOOTH SIDE DOWN), wipe out the cover, and clip back into place.

The compressor manifold must be periodically removed to clean out any condensation, etc. To do this bleed off any residual pressure that may be in the manifold; undo the hexagonal headed bolt at the end of the manifold. Remove the manifold and wipe out any moisture. If there is excessive moisture in the manifold then it should be cleaned out more regularly.

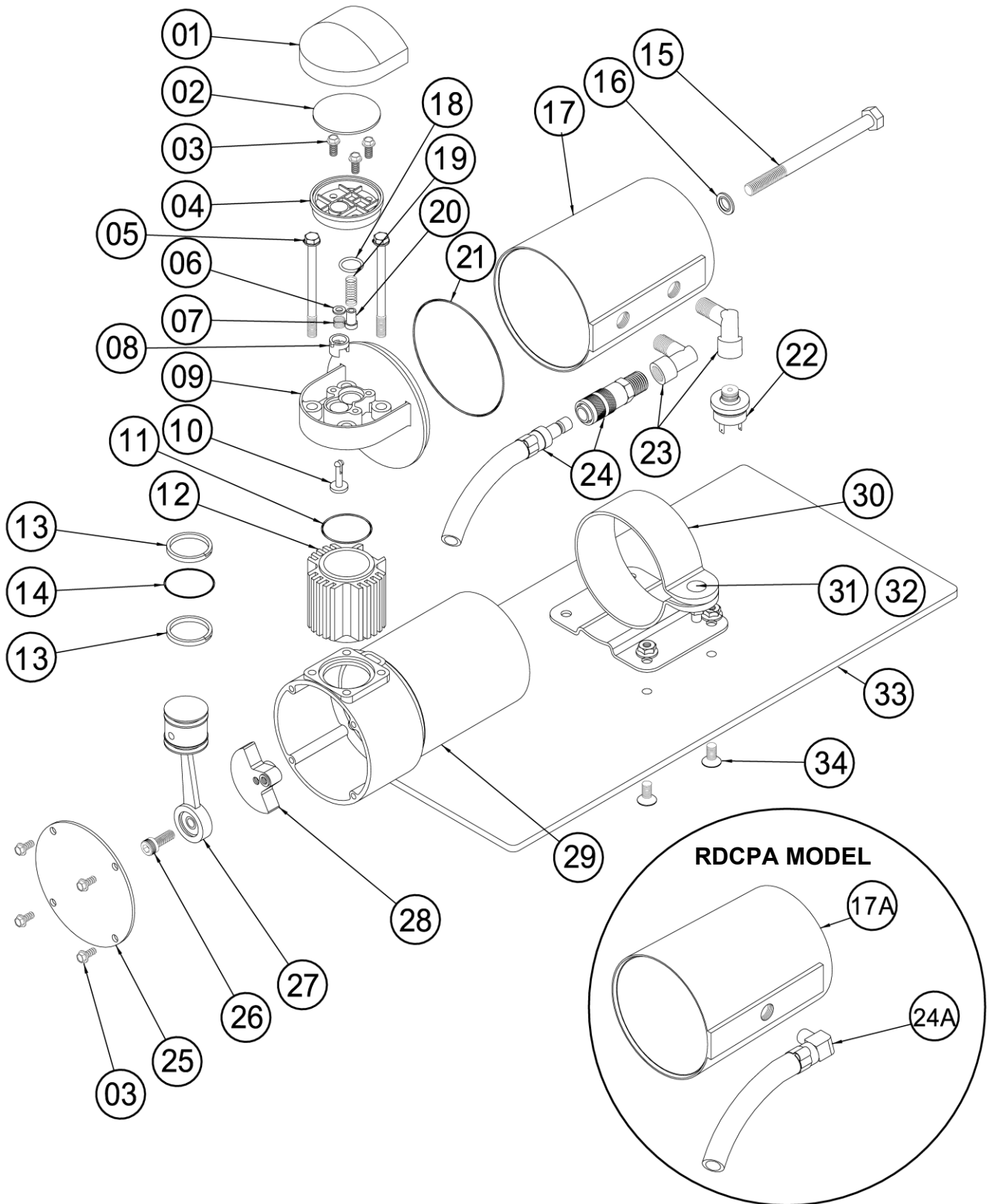
Refit manifold making sure that the O-ring is in its correct position; insert the bolt with the seal under the head. Torque the bolt up to 9.5Nm. Do not over tighten. Run the compressor and check for any air leaks.

- For replacement O-ring use BS041 Viton 75.
- Barrel shims are used to set the deck height of the piston. With the piston at top dead centre (TDC), the deck height is the distance of the piston crown to the top of the barrel (see diagram below). Deck height specification is 0.50mm +0.2/-0.0 [0.020" +0.008/-0.000].



Deck height should measure between 0.50mm and 0.70mm [0.020 and 0.028"]

RDCP MODEL SHOWN



RDCP & RDCPA

