

ARB AIR LOCKER *Air Operated Locking Differentials*

CKBLA12

Brushless Single On-Board Compressor

ITEM #	QTY	DESCRIPTION	PART #	NOTES	ITEM #	QTY	DESCRIPTION	PART #	NOTES
1	1	PISTON ASSEMBLY	320103	1	21	1	O-RING (BS029N70)	160250	1
2	3	O-RING (BS032S70)	160247	1	22	1	CAP SCREW (M6 x 25 mm)	200718	1, 6
3	1	VALVE PLATE ASSEMBLY	320105	1	23	1	RETAINING RING (DIN7993 RW-14)	6151767	1
4	1	COMPRESSOR HEAD	330208		24	1	AXLE	320232	1
5	1	COMPRESSOR HEAD FASCIA	330218		25	1	COMPRESSOR MOUNT ASSEMBLY	330101	
6	1	SCREW (M3 x 5 mm)	6152223	3	26	2	HEX BOLT (M6 x 80 mm)	200719	5
7	2	O-RING (BS031S70)	160909	1	27	1	MOTOR ASSEMBLY	330104	
8	2	PLUG (1/8 BSPP)	170803	4	28	1	COMPLIANCE STICKER	2128752	
9	1	PLUG (1/4 NPSC)	170804	4	29	1	MOTOR END CAP FASCIA	330217	
10	1	O-RING (METRIC 2 x 6 mm)	160908	1	30	1	FITTING KIT	6178154	2
11	1	FLAT WASHER (M6)	6151046	1	31	1	WIRING HARNESS	180430	2
12	1	HEX BOLT (M6 x 110 mm)	200721	1, 5	FITTING KIT CONTENTS: 4 HEX NUT (NYLON LOCKING M6) 6151223 4 HEX BOLT (M6 x 25 mm) 200405 8 FLAT WASHER (M6 x 20 mm) 200709 1 PRESSURE SWITCH (150 psi) 180901SP 1 ROCKER SWITCH 180222SP 1 ADAPTOR (1/4 NPSC JIC-4 M-M) 170633				
13	1	MANIFOLD TUBE	320215						
14	1	MANIFOLD CAP (1/4" NPSC)	330214						
15	1	SAFETY VALVE POPPET	320205	1					
16	1	SAFETY VALVE SPRING	150115	1					
17	1	SAFETY VALVE FITTING	320204	1, 4					
18	1	AIR FILTER ASSEMBLY	320501	1					
19	2	HEX BOLT (M6 x 10 mm)	6151496	5					
20	1	AIR FILTER FLANGE	320212						

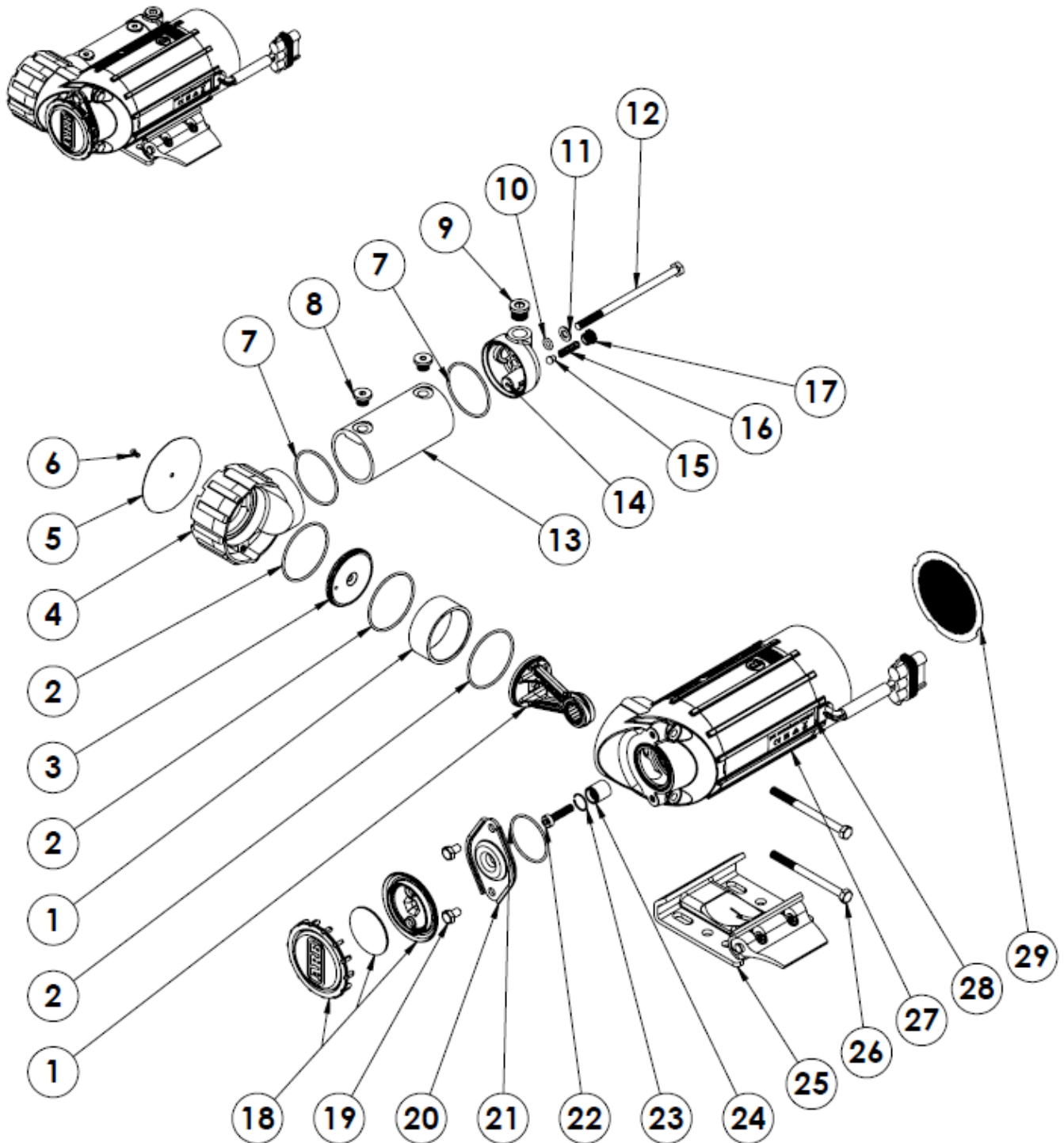
Notes:

- 1 Included in Complete Overhaul Kit (P/N 180914)
- 2 Not illustrated in exploded view
- 3 Torque to 1 Nm
- 4 Torque to 4 Nm
- 5 Torque to 6 Nm
- 6 Torque to 13 Nm and add thread lock



CKBLA12

Air Compressor – Exploded Parts Diagram



CKBLA12

Air Compressor – Detailed Specifications

GENERAL SPECS		METRIC		IMPERIAL	
SUPPLY VOLTAGE		12	Volts DC	12	Volts DC
MAX CURRENT DRAW		45	Amps	45	Amps
FUZE RATING		60	Amps	60	Amps
WEIGHT (total kit)		4.5	kg	9.5	lb
DIMENSIONS	- LENGTH	140	mm	5.5	in
	- WIDTH	210	mm	8.3	in
	- HEIGHT	90	mm	3.5	in
DUTY CYCLE		100%	60 minutes running per hour 22 °C, 200 kPa [72 °F, 29 psi]		
PRESSURE SWITCH CLOSED (motor on)		930	kPa	135	psi
PRESSURE SWITCH OPEN (motor off)		1030	kPa	150	psi
SAFETY VALVE PRESSURE		1240	kPa	180	psi
MAX. AMBIENT TEMPERATURE		100	°C	212	°F

SPECS at NO LOAD		METRIC		IMPERIAL	
TEST PRESSURE		0	kPa	0	psi
CURRENT DRAW		15	Amps	15	Amps
AIR FLOW		130	L/min	4.6	CFM

SPECS at TYRE PRESSURE		METRIC		IMPERIAL	
TEST PRESSURE		200	kPa	29	psi
CURRENT DRAW		40	Amps	40	Amps
AIR FLOW		88	L/min	3.1	CFM

NOTE: The specifications above were recorded under laboratory conditions at 22°C [72°F].

EXTERNAL CONNECTIONS SPECS	
AIR INTAKE THREADS (female)	1/4-18 NPSC (parallel pipe thread)
AIR FILTER THREAD (male)	1/4-18 NPT (tapered pipe thread)
MANIFOLD OUTLET THREAD	1/4-18 NPSC (parallel pipe thread)