

RD150

Ford 9.75",34 SPL,C-Clip

PARTS LIST

ITEM #	QTY	DESCRIPTION	PART #	NOTES
01	1	SPLINED SIDE GEAR	SEE NOTE	3
02	1	SPIDER BLOCK	070404SP	
03	1	LONG CROSS SHAFT	061501SP	
04	1	SIDE GEAR	SEE NOTE	3
05	2	SIDE GEAR THRUST WASHER	SEE NOTE	4
06	1	COUNTERSUNK SCREW (PK OF 2)	200214SP	
07	1	RETAINING PIN SET (PK OF 4)	120601SP	
08	1	SEAL HOUSING O-RINGS (PK OF 2)	160248-2	1
09	1	SEAL HOUSING KIT	082103SP	
10	2	SHIM KIT	SHK001	
*	1	MASTER SHIM	150330	
11	2	TAPERED ROLLER BEARING	NOT SUPPLIED	2
12	1	FLANGE CAP KIT	028604SP	
13	1	BONDED SEAL	160703SP	
14	1	CLUTCH GEAR & WAVESPRING KIT	050907SP	6
*	1	CLUTCH GEAR & RETURN SPRINGS KIT	050807SP	6
15	1	WAVESPRING	150707SP	6
*	1	RETURN SPRINGS KIT	150107SP	6
16	1	SHORT CROSS SHAFT	061501SP	
17	3	PINION GEAR	SEE NOTE	3
18	3	PINION THRUST WASHER	SEE NOTE	4
19	1	DIFFERENTIAL CASE (SUITS WAVESPRING ONLY)	013224SP	5
*	1	DIFFERENTIAL CASE (SUITS RETURN SPRINGS ONLY)	013204SP	5
*	1	C-CLIP KIT	CCK005	
*	1	BULKHEAD FITTING KIT (BANJO TYPE)	170114	7
*	1	AIR LINE (6mm DIA X 6m LONG)	170314	7
*	1	SOLENOID VALVE (12V)	180103	
*	1	SWITCH RR LOCKER	180224	
*	1	CABLE TIE (PK OF 25)	180305	
*	1	OPERATING & SERVICE MANUAL	210200	
*	1	INSTALLATION GUIDE	2102150	

* *Not illustrated in exploded view*

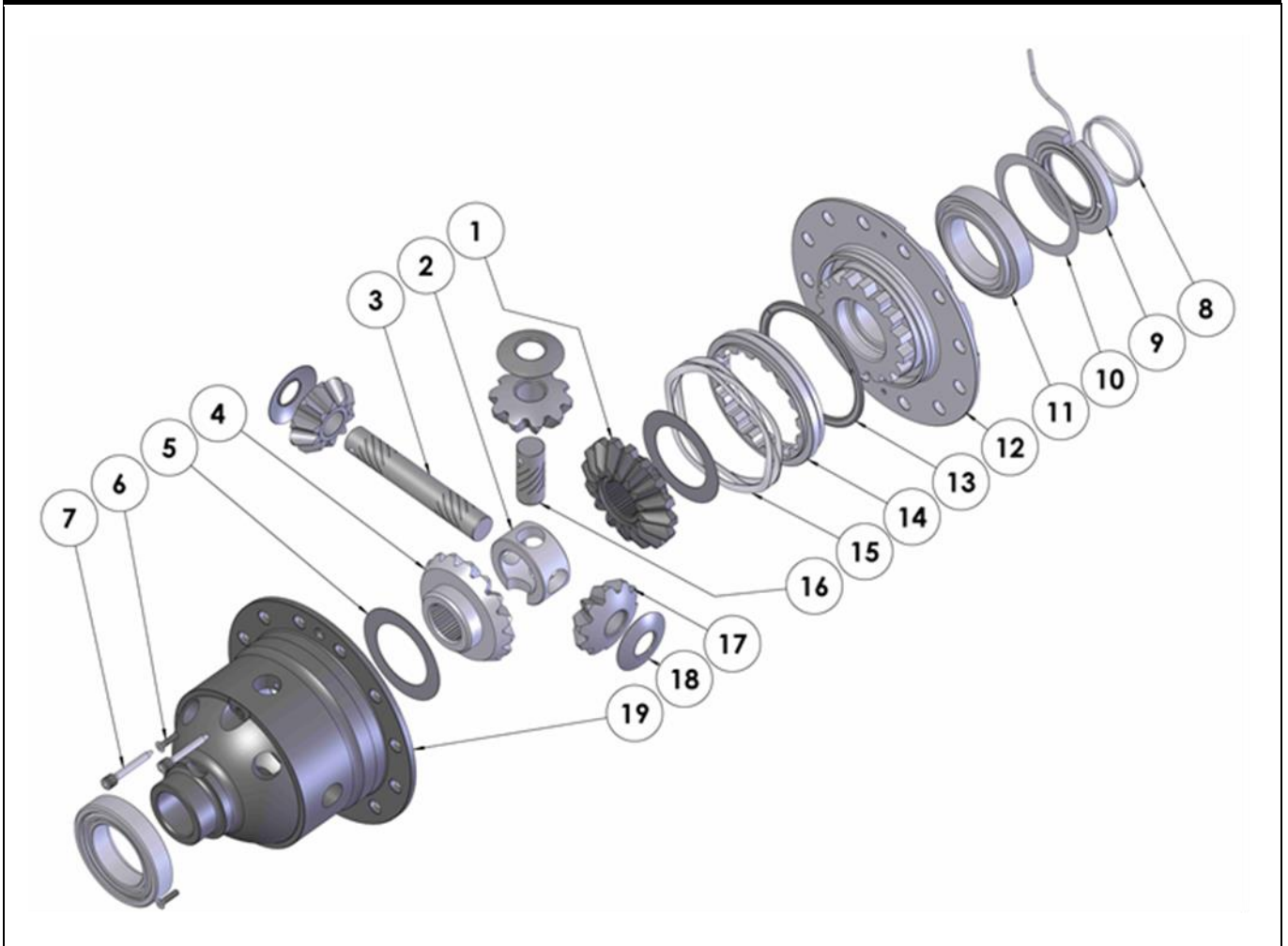
NOTES

- 1 For replacement O-rings use only BS140 Viton 75.
- 2 For replacement bearing use Timken part # NP343847-372019.
- 3 Available only as complete 5 gear set #728K031C.
- 4 Available only as complete thrust washer kit #730K01.
- 5 Identify the spring type in your diff and order the correct diff case to replace.
- 6 Replace the spring and/or the corresponding clutch gear with the same type.
(If spring type is changed, a matching diff case must also be used. See item 19.)
- 7 All diffs produced before serial #17070001 came with 5mm air connection system. For information contact ARB.

RD150

Ford 9.75", 34 SPL, C-Clip

EXPLODED DIAGRAM



SPECIFICATIONS

Axle Spline	34 tooth, Ø34.8mm [1.37"]
Ratio Supported	3.31:1 & down
Ring Gear ID	154.94mm [6.1"]
Ring Gear OD	248mm [9.75"]
Ring Gear Bolts	12 bolts on Ø180.4mm [7.1"]
Ring Gear Torque	128Nm [95 ft-lb]
Backlash	0.15-0.25mm [0.006-0.010"]
Bearing Cap Torque	94Nm [70 ft-lb]