

### RD169

Dana 60HD,C-Clip,35 SPL,4.10 & DN

### PARTS LIST

| ITEM # | QTY | DESCRIPTION                                   | PART #       | NOTES |
|--------|-----|---|--------------|-------|
| 1      | 1   | SPLINED SIDE GEAR                             | SEE NOTE     | 3     |
| 2      | 1   | SPIDER BLOCK                                  | 070404SP     |       |
| 3      | 1   | LONG CROSS SHAFT                              | 061501SP     |       |
| 4      | 1   | SIDE GEAR                                     | SEE NOTE     | 3     |
| 5      | 2   | SIDE GEAR THRUST WASHER                       | SEE NOTE     | 5     |
| 6      | 1   | COUNTERSUNK SCREW (PK OF 2)                   | 200214SP     |       |
| 7      | 1   | RETAINING PIN SET (PK OF 4)                   | 120601SP     |       |
| 8      | 1   | SEAL HOUSING O-RINGS (PK OF 2)                | 160248-2     | 1     |
| 9      | 1   | SEAL HOUSING KIT                              | 082104SP     |       |
| 10     | 1   | SHIM KIT                                      | SHK001       |       |
| *      | 2   | MASTER SHIM                                   | SEE NOTE     | 4     |
| 11     | 2   | TAPERED ROLLER BEARING                        | NOT SUPPLIED | 2     |
| 12     | 1   | FLANGE CAP KIT                                | 028606SP     |       |
| 13     | 1   | BONDED SEAL                                   | 160703SP     |       |
| 14     | 1   | CLUTCH GEAR & WAVESPRING KIT                  | 050907SP     | 7     |
| *      | 1   | CLUTCH GEAR & RETURN SPRINGS KIT              | 050807SP     | 7     |
| 15     | 1   | WAVESPRING                                    | 150707SP     | 7     |
| *      | 1   | RETURN SPRINGS KIT                            | 150107SP     | 7     |
| 16     | 1   | SHORT CROSS SHAFT                             | 061601SP     |       |
| 17     | 3   | PINION GEAR                                   | SEE NOTE     | 3     |
| 18     | 3   | PINION THRUST WASHER                          | SEE NOTE     | 5     |
| 19     | 1   | DIFFERENTIAL CASE (SUITS WAVESPRING ONLY)     | 013228SP     | 6     |
| *      | 1   | DIFFERENTIAL CASE (SUITS RETURN SPRINGS ONLY) | 013208SP     | 6     |
| *      | 1   | BULKHEAD FITTING KIT (BANJO TYPE)             | 170114       | 8     |
| *      | 1   | AIR LINE (6mm DIA X 6m LONG)                  | 170314       | 8     |
| *      | 1   | SOLENOID VALVE (12V)                          | 180103       |       |
| *      | 1   | SWITCH FR OR RR LOCKER                        | 180225       |       |
| *      | 1   | CABLE TIE (PK OF 25)                          | 180305       |       |
| *      | 1   | OPERATING & SERVICE MANUAL                    | 210200       |       |
| *      | 1   | INSTALLATION GUIDE                            | 2102169      |       |

\* *Not illustrated in exploded view*

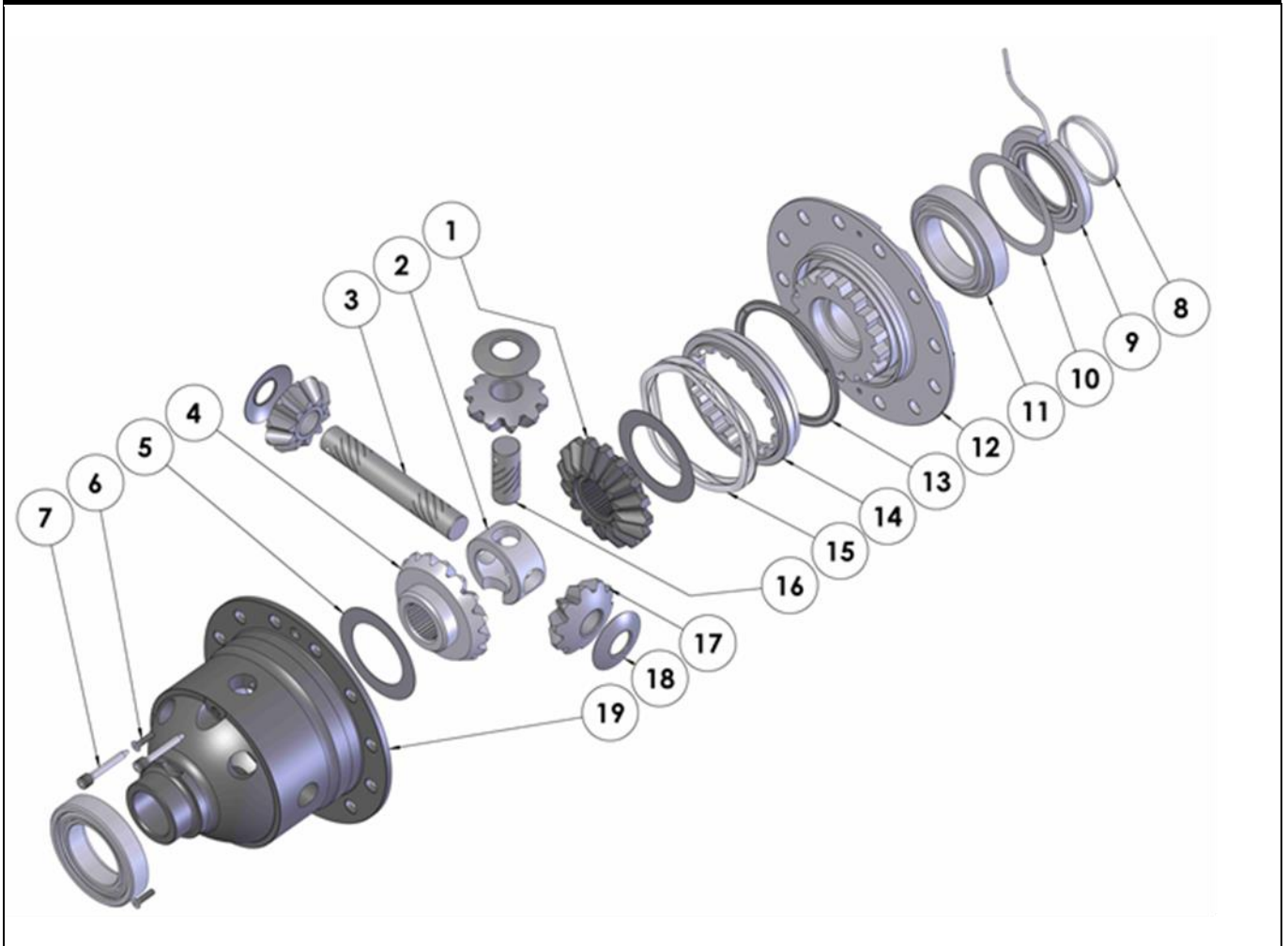
### NOTES

- 1 For replacement O-rings use only BS140 Viton 75.
- 2 For replacement bearing use Timken part # 387A / 382S.
- 3 Available only as complete 5 gear set #728K071C.
- 4 Use 150331 (4.0mm thick) for diff with thin bearing cup.
- 5 Available only as complete thrust washer kit #730K01.
- 6 Identify the spring type in your diff and order the correct diff case to replace.
- 7 Replace the spring and/or the corresponding clutch gear with the same type.  
*(If spring type is changed, a matching diff case must also be used. See item 19.)*
- 8 All diffs produced before serial #17070001 came with 5mm air connection system. For information contact ARB.
- For ratios of 4.56:1 and up refer to RD168 ([Section 2.168](#)).
- For Dana 60HD non C-clip model refer to RD167 ([Section 2.167](#)).

**RD169**

Dana 60HD,C-Clip,35 SPL,4.10 & DN

### EXPLODED DIAGRAM



### SPECIFICATIONS

|                    |                            |
|--------------------|----------------------------|
| Axle Spline        | 35 tooth, Ø38.1mm [1.50"]  |
| Ratio Supported    | 4.10:1 & dn                |
| Ring Gear ID       | 162.0mm [6.38"]            |
| Ring Gear OD       | 248mm [9.75"]              |
| Ring Gear Bolts    | 12 bolts on Ø191mm [7.50"] |
| Ring Gear Torque   | 149Nm [110 ft-lb]          |
| Backlash           | 0.15-0.25mm [0.006-0.010"] |
| Bearing Cap Torque | 108Nm [80 ft-lb]           |