

**RD261**

Isuzu,RR,26 SPL

### PARTS LIST

| ITEM # | QTY | DESCRIPTION                    | PART #       | NOTES |
|--------|-----|--------------------------------|--------------|-------|
| 1      | 1   | FLANGE CAP KIT                 | 027358SP     |       |
| 2      | 1   | BONDED SEAL                    | 160703SP     |       |
| 3      | 1   | CLUTCH GEAR & WAVESPRING KIT   | 050904SP     |       |
| 4      | 4   | SHORT CROSS SHAFT              | 060403SP     |       |
| 5      | 1   | SIDE GEAR                      | SEE NOTE     | 2     |
| 6      | 2   | SIDE GEAR THRUST WASHER        | SEE NOTE     | 3     |
| 7      | 1   | COUNTERSUNK SCREW (PK OF 2)    | 200213SP     |       |
| 8      | 1   | RETAINING PIN SET (PK OF 4)    | 120601SP     |       |
| 9      | *   | TAPERED ROLLER BEARING         | NOT SUPPLIED |       |
| 10     | 1   | SHIM KIT                       | SHK005       |       |
| *      | 1   | MASTER SHIM                    | 150341       |       |
| 11     | 1   | SEAL HOUSING BRACKET           | 220230       |       |
| 12     | 1   | SEAL HOUSING O-RINGS (PK OF 2) | 160257-2     | 1     |
| 13     | 1   | SEAL HOUSING KIT               | 081831SP     |       |
| 14     | 1   | WAVESPRING                     | 150704SP     |       |
| 15     | 1   | SPLINED SIDE GEAR              | SEE NOTE     | 2     |
| 16     | 4   | PINION GEAR                    | SEE NOTE     | 2     |
| 17     | 4   | PINION THRUST WASHER           | SEE NOTE     | 3     |
| 18     | 1   | SPIDER BLOCK                   | 070201SP     |       |
| 19     | 1   | THRUST BLOCK                   | 110511SP     |       |
| 20     | 1   | DIFFERENTIAL CASE              | 013058SP     |       |
| *      | 1   | BULKHEAD SEAT                  | 110403SP     |       |
| *      | 1   | WASHER FLAT M6X25X2.8          | 4584379      |       |
| *      | 1   | BULKHEAD FITTING (BANJO TYPE)  | 170114       |       |
| *      | 1   | AIR LINE (6mm DIA X 6m LONG)   | 170314SP     |       |
| *      | 1   | SOLENOID VALVE (12V)           | 180103       |       |
| *      | 1   | SWITCH RR LOCKER               | 180224       |       |
| *      | 1   | CABLE TIE (PK OF 25)           | 180305       |       |
| *      | 1   | OPERATING & SERVICE MANUAL     | 210200       |       |
| *      | 1   | INSTALLTION GUIDE              | 2102261      |       |

\* *Not illustrated in exploded view*

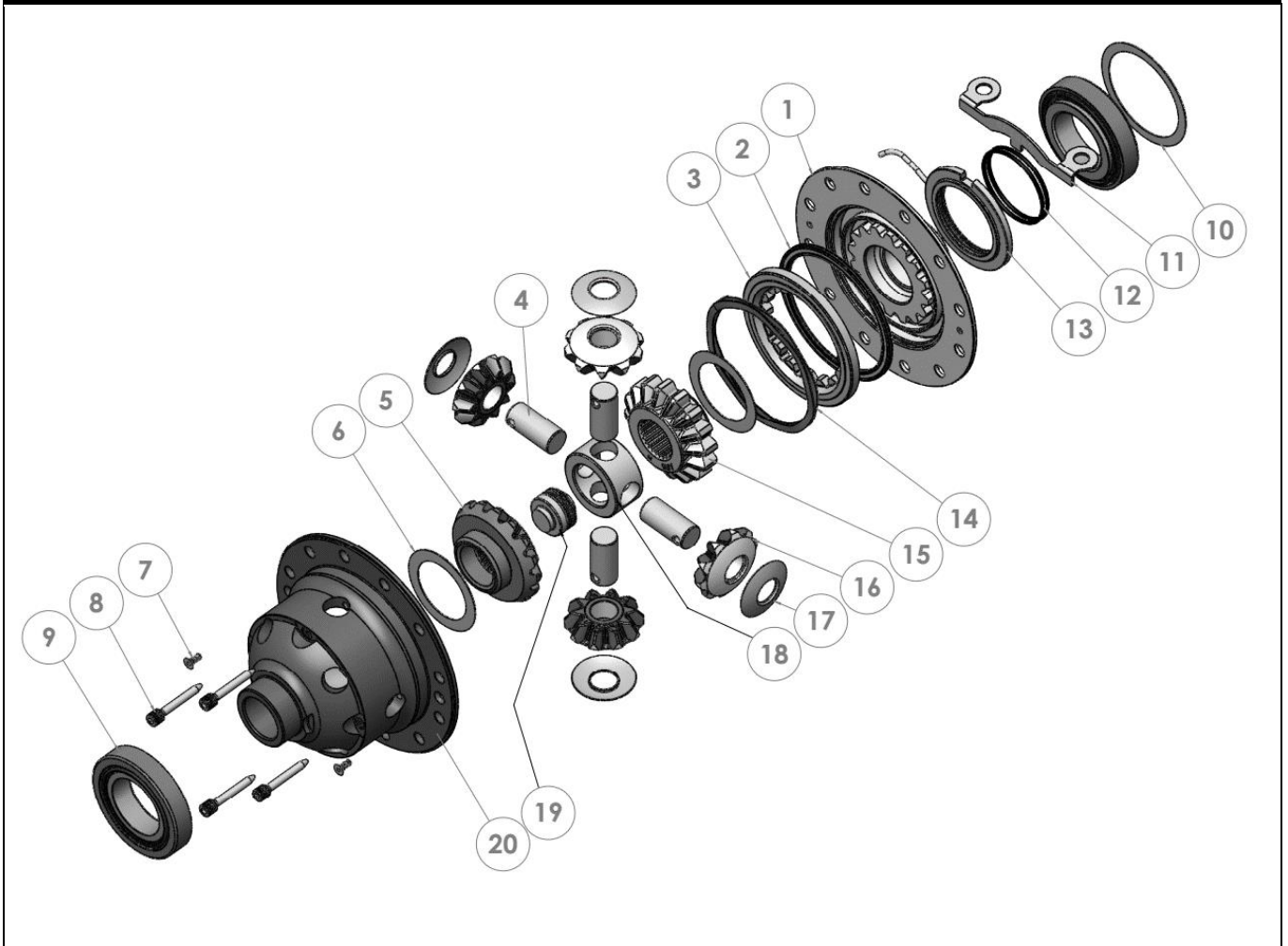
### NOTES

- 1 For replacement O-rings use only BS142 Viton 75
- 2 Available only as complete 6 gear set # 728H351
- 3 Available only as complete thrust washer kit #730H01

**RD261**

Isuzu,RR,26 SPL

### EXPLODED DIAGRAM



### SPECIFICATIONS

|                    |   |
|--------------------|---|
| Axle Spline        | 26 tooth, Ø33.5mm [1.32"]                                     |
| Ratio Supported    | All   |
| Ring Gear ID       | 138.0mm [5.43"]   |
| Ring Gear OD       | 220.0mm [8.66"]   |
| Ring Gear Bolts    | 12 bolts on Ø165mm [6.50"]                                    |
| Ring Gear Torque   | 10mm bolts 108 Nm [80 ft-lb]<br>12mm bolts 145 Nm [107 ft-lb] |
| Backlash           | 0.15-0.20mm [0.006-0.008"]                                    |
| Bearing Cap Torque | 108 Nm [80 ft-lb]   |

ARB Corporation Ltd • 42-44 Garden St Kilsyth VIC 3137 Australia  
ARB 4X4 Accessories USA • 720 SW 34<sup>th</sup> St Renton WA 98057 USA  
Australia & International Customer Service • +61 3 9761 6622  
North America Customer Service • Toll Free 866 293 9078  
www.arb.com.au (AUS & Int) www.arbusa.com (N. America)

