

RD158

Dana 50,30 SPL

PARTS LIST

| ITEM # | QTY | DESCRIPTION | PART # | NOTES |
|--------|-----|-----------------------------------|--------------|-------|
| 1 | 1 | FLANGE CAP KIT | 027336SP | |
| 2 | 1 | BONDED SEAL | 160702SP | |
| 3 | 1 | CLUTCH GEAR & WAVESPRING KIT | 050906SP | |
| 4 | 2 | SHORT CROSS SHAFT | 060403SP | |
| 5 | 1 | SIDE GEAR | SEE NOTE | 3 |
| 6 | 2 | SIDE GEAR THRUST WASHER | SEE NOTE | 4 |
| 7 | 1 | COUNTERSUNK SCREW (PK OF 2) | 200213SP | |
| 8 | 1 | RETAINING PIN SET (PK OF 4) | 120601SP | |
| 9 | * | TAPERED ROLLER BEARING | NOT SUPPLIED | 2 |
| 10 | 1 | SEAL HOUSING KIT | 081823SP | |
| 11 | 1 | SEAL HOUSING O-RINGS (PK OF 2) | 160207-2 | 1 |
| 12 | 1 | SHIM KIT | SHK009 | |
| * | 1 | MASTER SHIM | 150305 | |
| 13 | 1 | WAVESPRING | 150706SP | |
| 14 | 1 | SPLINED SIDE GEAR | SEE NOTE | 3 |
| 15 | 1 | LONG CROSS SHAFT | 060204SP | |
| 16 | 1 | SPIDER BLOCK | 070201SP | |
| 17 | 4 | PINION GEAR | SEE NOTE | 3 |
| 18 | 4 | PINION THRUST WASHER | SEE NOTE | 4 |
| 19 | 1 | DIFFERENTIAL CASE | 013036SP | |
| * | 1 | BULKHEAD FITTING KIT (BANJO TYPE) | 170114 | 5 |
| * | 1 | AIR LINE (6mm DIA X 6m LONG) | 170314 | 5 |
| * | 1 | SOLENOID VALVE (12V) | 180103 | |
| * | 1 | SWITCH FR LOCKER | 180223 | |
| * | 1 | CABLE TIE (PK OF 25) | 180305 | |
| * | 1 | OPERATING & SERVICE MANUAL | 210200 | |
| * | 1 | INSTALLATION GUIDE | 2102158 | |

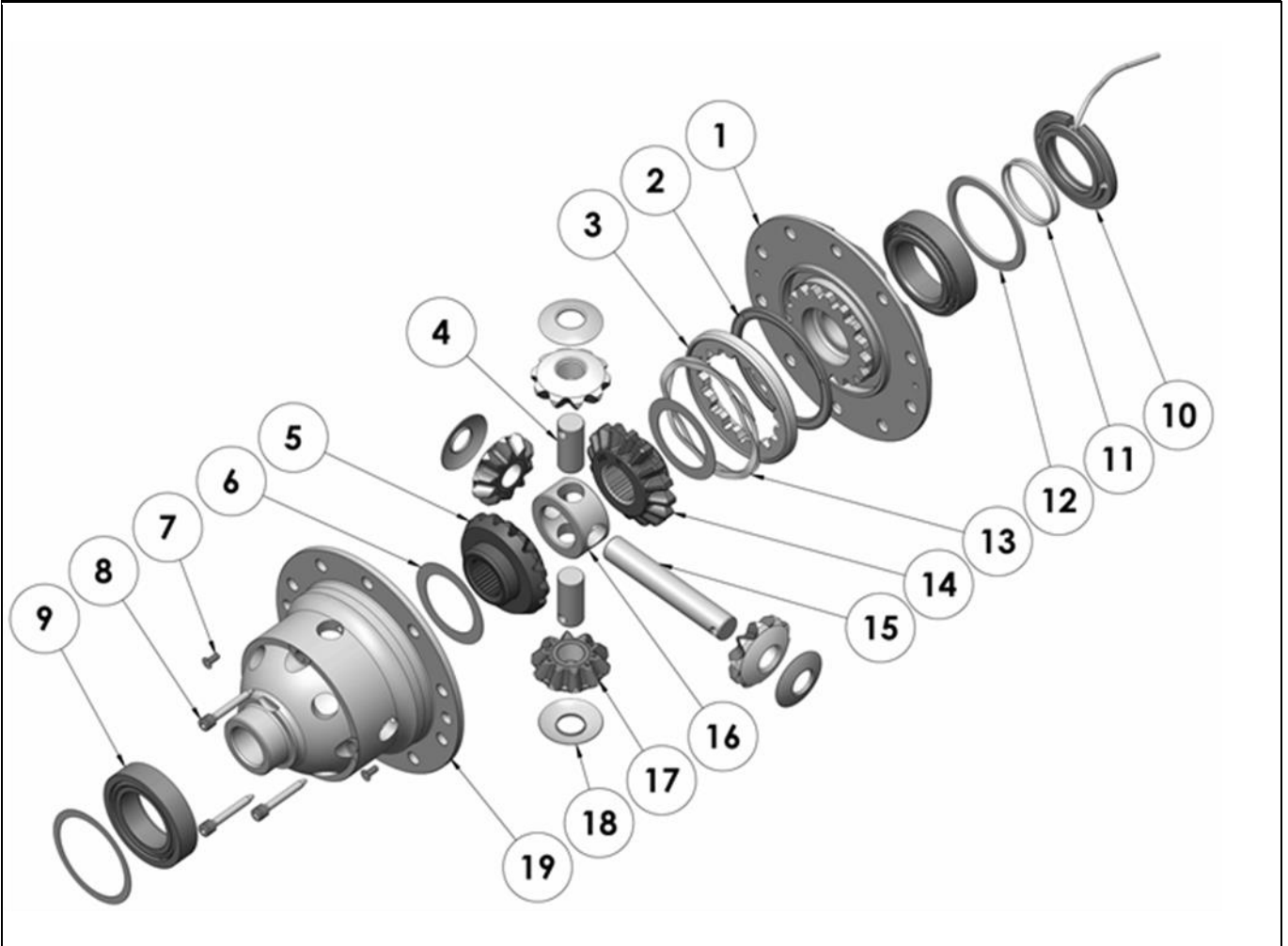
* *Not illustrated in exploded view*

NOTES

- 1 For replacement O-rings use only BS136 Viton 75.
- 2 For replacement bearing use Timken part # LM104948 / LM104911A
- 3 Available only as complete 6 gear set # 728H081
- 4 Available only as complete thrust washer kit #730H01
- 5 All diffs produced before serial #17070001 came with 5mm air connection system. For information contact ARB.
- For Ford IFS installation refer to tech note ([Section 5.12](#)) for alternative to C-clip use.

RD158

Dana 50,30 SPL

EXPLODED DIAGRAM**SPECIFICATIONS**

| | |
|--------------------|----------------------------|
| Axle Spline | 30 tooth, Ø33.3mm [1.31"] |
| Ratio Supported | All |
| Ring Gear ID | 141.3mm [5.56"] |
| Ring Gear OD | 229mm [9.0"] |
| Ring Gear Bolts | 10 bolts on Ø168mm [6.61"] |
| Ring Gear Torque | 88Nm [65 ft-lb] |
| Backlash | 0.15-0.25mm [0.006-0.010"] |
| Bearing Cap Torque | 81Nm [60 ft-lb] |

ARB Corporation Ltd ▪ 42-44 Garden St Kilsyth VIC 3137 Australia
ARB 4X4 Accessories USA ▪ 4810 D St. NW #103 Auburn WA 98001 USA
Australia & International Customer Service ▪ +61 3 9761 6622
North America Customer Service ▪ Toll Free 866 293 9078
www.arb.com.au (AUS & Int) www.arbusa.com (N. America)