

RD182

Nissan R180A,27 SPL,8 Bolt RG

PARTS LIST

ITEM #	QTY	DESCRIPTION	PART #	NOTES
1	1	FLANGE CAP KIT	028518SP	
2	1	BONDED SEAL	160701SP	
3	1	CLUTCH GEAR & WAVESPRING KIT	050908SP	
4	2	SHORT CROSS SHAFT	060309SP	
5	1	LONG CROSS SHAFT	060108SP	
6	1	THRUST BLOCK	SEE NOTE	2
7	1	SIDE GEAR	SEE NOTE	2
8	2	SIDE GEAR THRUST WASHER	SEE NOTE	3
9	1	COUNTERSUNK SCREW (PK OF 2)	200213SP	
10	1	RETAINING PIN SET (PK OF 4)	120601SP	
11	*	TAPERED ROLLER BEARING	NOT SUPPLIED	
12	1	SEAL HOUSING O-RINGS (PK OF 2)	160221-2	1
13	1	SEAL HOUSING KIT	081820SP	
14	1	SHIM KIT	SHK008	
15	1	WAVESPRING	150702SP	
16	1	SPLINED SIDE GEAR	SEE NOTE	2
17	4	PINION GEAR	SEE NOTE	2
18	4	PINION THRUST WASHER	SEE NOTE	3
19	1	SPIDER BLOCK	070702SP	
20	1	DIFFERENTIAL CASE	013118SP	
*	1	BULKHEAD FITTING KIT (BANJO TYPE)	170114	4
*	1	AIR LINE (6mm DIA X 6m LONG)	170314	4
*	1	SOLENOID VALVE (12V)	180103	
*	1	SWITCH FR LOCKER	180223	
*	1	CABLE TIE (PK OF 25)	180305	
*	1	OPERATING & SERVICE MANUAL	210200	
*	1	INSTALLATION GUIDE	2102182	

* *Not illustrated in exploded view*

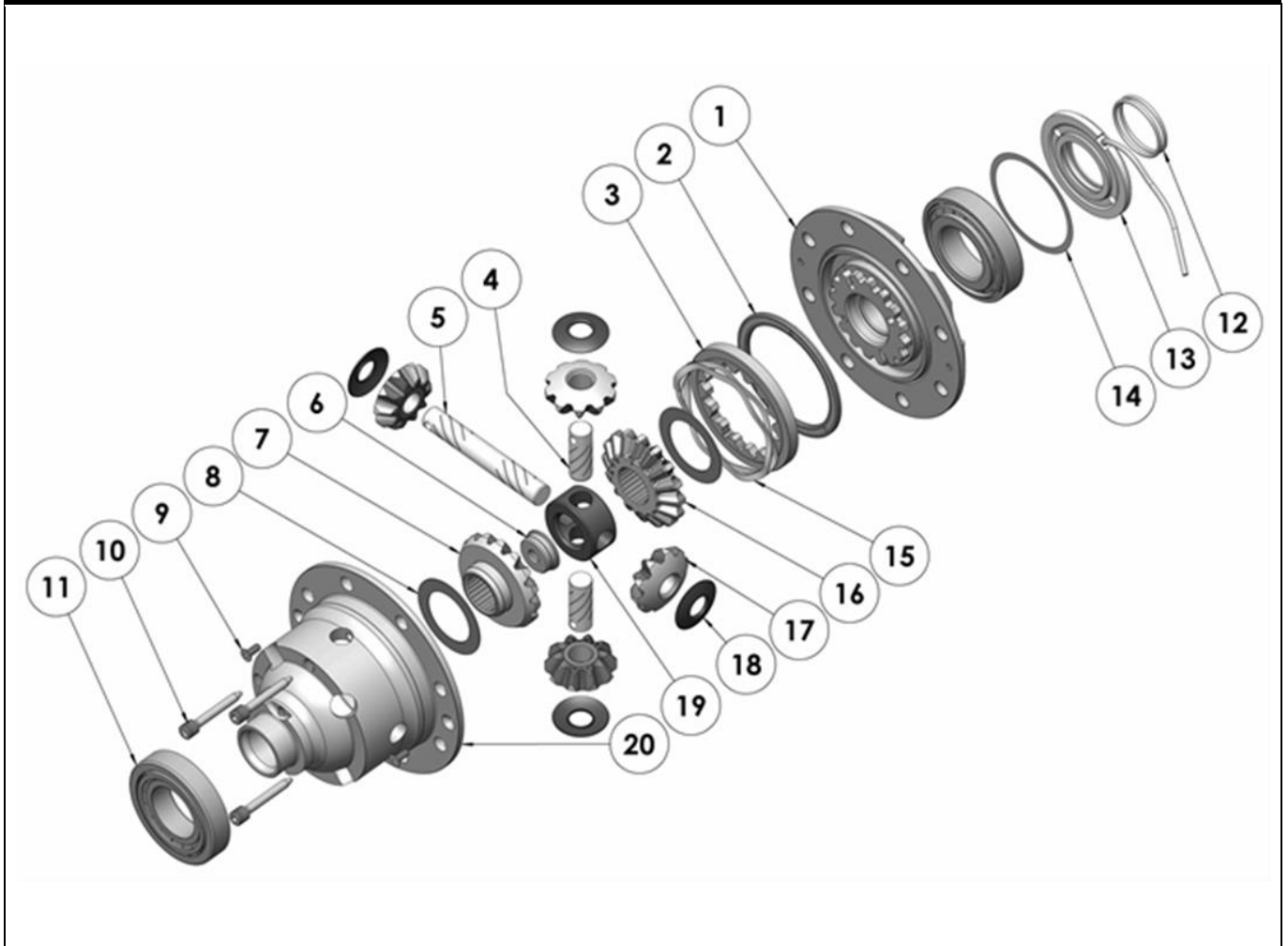
NOTES

- 1 For replacement O-rings use only BS129 Viton 75.
- 2 Available only as complete 6 gear set # 728JA32
- 3 Available only as complete thrust washer kit #730JA01
- 4 All diffs produced before serial #17070001 came with 5mm air connection system. For information contact ARB.

RD182

Nissan R180A,27 SPL,8 Bolt RG

EXPLODED DIAGRAM



SPECIFICATIONS

Axle Spline	27 tooth, $\varnothing 27.8\text{mm}$ [1.09"]
Ratio Supported	All
Ring Gear ID	115.0mm [4.53"]
Ring Gear Bolts	8 bolts on $\varnothing 135\text{mm}$ [5.31"]
Ring Gear Torque	102Nm [75 ft-lb]
Backlash	0.10-0.15mm [0.004"-0.006"]

ARB Corporation Ltd • 42-44 Garden St Kilsyth VIC 3137 Australia
ARB 4X4 Accessories USA • 4810 D St. NW #103 Auburn WA 98001 USA
Australia & International Customer Service • +61 3 9761 6622
North America Customer Service • Toll Free 866 293 9078
www.arb.com.au (AUS & Int) www.arbusa.com (N. America)