

RD233

Dynatrac Prorock XD60, 40 SPL

PARTS LIST

ITEM #	QTY	DESCRIPTION	PART #	NOTES
1	-	SHIM KIT	NOT SUPPLIED	5
2	1	SEAL HOUSING O-RINGS (PK OF 2)	160248-2	1
3	1	SEAL HOUSING KIT	082108SP	
4	1	BONDED SEAL	160703SP	
5	1	CLUTCH GEAR & WAVESPRING KIT	050907SP	
6	1	SPIDER BLOCK	070402SP	
7	1	SIDE GEAR	SEE NOTE	3
8	1	COUNTERSUNK SCREW (PK OF 2)	200215SP	
9	1	RETAINING PIN SET (PK OF 4)	120601SP	
10	-	SHIM KIT	NOT SUPPLIED	5
11	1	2.5MM MASTER SHIM	150359	
12	1	5.0MM MASTER SHIIM	150358	
13	-	TAPERED ROLLER BEARING	NOT SUPPLIED	2
14	1	FLANGE CAP KIT	028620SP	
15	1	WAVESPRING	150707SP	
16	1	SPLINED SIDE GEAR	SEE NOTE	3
17	4	SHORT CROSS SHAFT	061601SP	
18	4	PINION GEAR	SEE NOTE	3
19	4	PINION THRUST WASHER	SEE NOTE	4
20	2	SIDE GEAR THRUST WASHER	SEE NOTE	4
21	1	DIFFERENTIAL CASE (SUITS WAVESPRING ONLY)	013232SP	
*	1	BULKHEAD FITTING KIT (BANJO TYPE)	170114	6
*	1	AIR LINE (6mm DIA X 6m LONG)	170314	6
*	1	SOLENOID VALVE (12V)	180103	
*	1	SWITCH RR LOCKER	180224	
*	1	CABLE TIE (PK OF 25)	180305	
*	1	OPERATING & SERVICE MANUAL	210200	
*	1	INSTALLATION GUIDE	2102233	

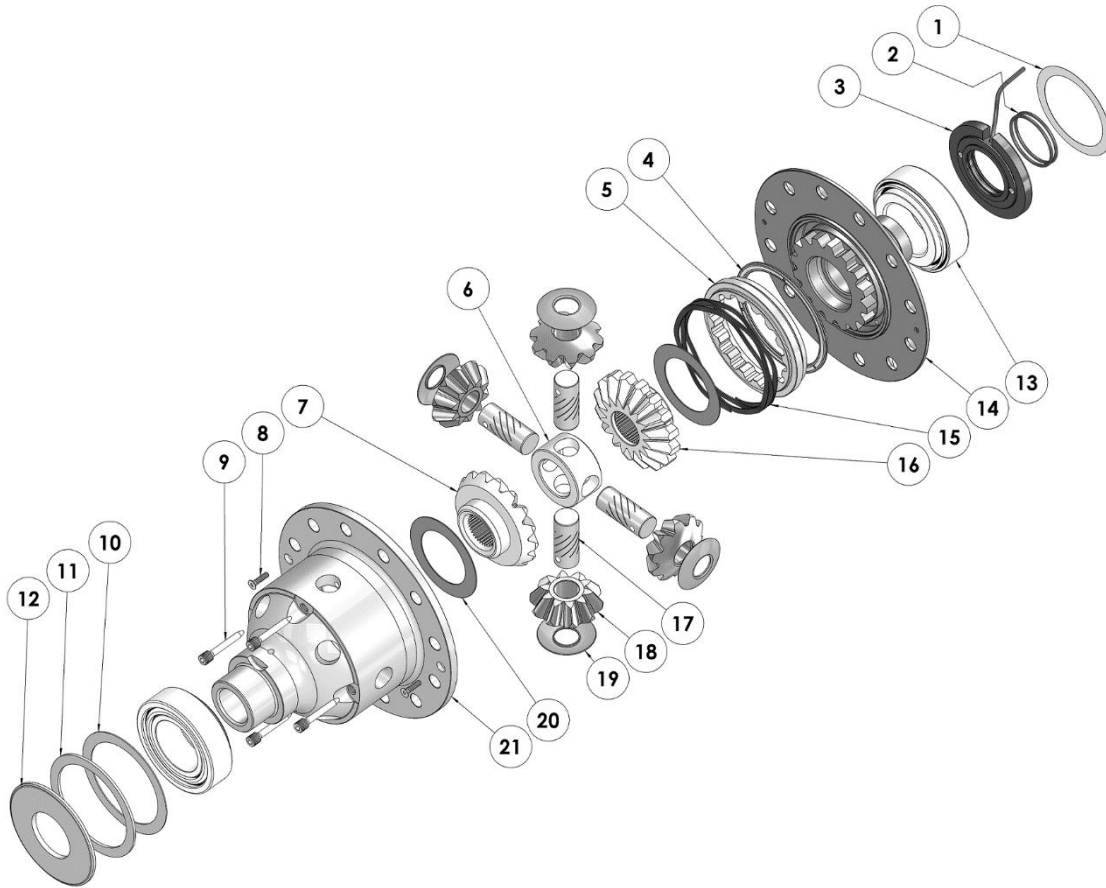
* *Not illustrated in exploded view*

NOTES

- 1 For replacement O-rings use only BS140 Viton 75.
- 2 For replacement bearing use Timken part # JM511946 / 511910.
- 3 Available only as complete 6 gear set # 728K051.
- 4 Available only as complete thrust washer kit #730K01.
- 5 Contact Dynatrac for suitable shim kit.
- 6 All diffs produced before serial #17070001 came with 5mm air connection system. For information contact ARB.

RD233

Dynatrac Prorock XD60, 40 SPL

EXPLODED DIAGRAM**SPECIFICATIONS**

Axle Spline	40 tooth, Ø43.4mm [1.71"]
Ratio Supported	Contact Dynatrac
Ring Gear ID	162.0mm [6.38"]
Ring Gear OD	Contact Dynatrac
Ring Gear Bolts	12 bolts on Ø190.6mm [7.50"]
Ring Gear Torque	Contact Dynatrac
Backlash	Contact Dynatrac
Bearing Cap Torque	Contact Dynatrac