

RD235

GM 14 Bolt, 10.5", 35 SPL, FF

PARTS LIST

| ITEM # | QTY | DESCRIPTION | PART # | NOTES |
|--------|-----|-----------------------------------|--------------|-------|
| 1 | 1 | TAPERED ROLLER BEARING | NOT SUPPLIED | |
| 2 | 1 | SEAL HOUSING BRACKET | 220202 | |
| 3 | 1 | BONDED SEAL | 160706SP | |
| 4 | 1 | CLUTCH GEAR & WAVESPRING KIT | 050905SP | |
| 5 | 1 | WAVESPRING | 150705SP | |
| 6 | 1 | LONG CROSS SHAFT | 061501SP | |
| 7 | 1 | SPIDER BLOCK | 070402SP | |
| 8 | 4 | PINION THRUST WASHER | SEE NOTE | 3 |
| 9 | 4 | PINION GEAR | SEE NOTE | 2 |
| 10 | 1 | SIDE GEAR | SEE NOTE | 2 |
| 11 | 1 | RETAINING PIN SET (PK OF 4) | 120601SP | |
| 12 | 2 | WASHER | 151205 | |
| 13 | 1 | SEAL HOUSING KIT | 082101SP | |
| 14 | 1 | SEAL HOUSING O-RINGS (PK OF 2) | 160233-2 | 1 |
| 15 | 1 | FLANGE CAP KIT | 028601SP | |
| 16 | 2 | SIDE GEAR THRUST WASHER | SEE NOTE | 3 |
| 17 | 1 | SPLINED SIDE GEAR | SEE NOTE | 2 |
| 18 | 2 | SHORT CROSS SHAFT | 061601SP | |
| 19 | 1 | DIFFERENTIAL CASE | 013201SP | |
| 20 | 1 | COUNTERSUNK SCREW (PK OF 2) | 200214SP | |
| * | 1 | BULKHEAD FITTING KIT (BANJO TYPE) | 170114 | 4 |
| * | 1 | AIR LINE (6mm DIA X 6m LONG) | 170314 | 4 |
| * | 1 | SOLENOID VALVE (12V) | 180103 | |
| * | 1 | SWITCH FR OR RR LOCKER | 180225 | |
| * | 1 | CABLE TIE (PK OF 25) | 180305 | |
| * | 1 | OPERATING & SERVICE MANUAL | 210200 | |
| * | 1 | INSTALLATION GUIDE | 2102235 | |

* *Not illustrated in exploded view*

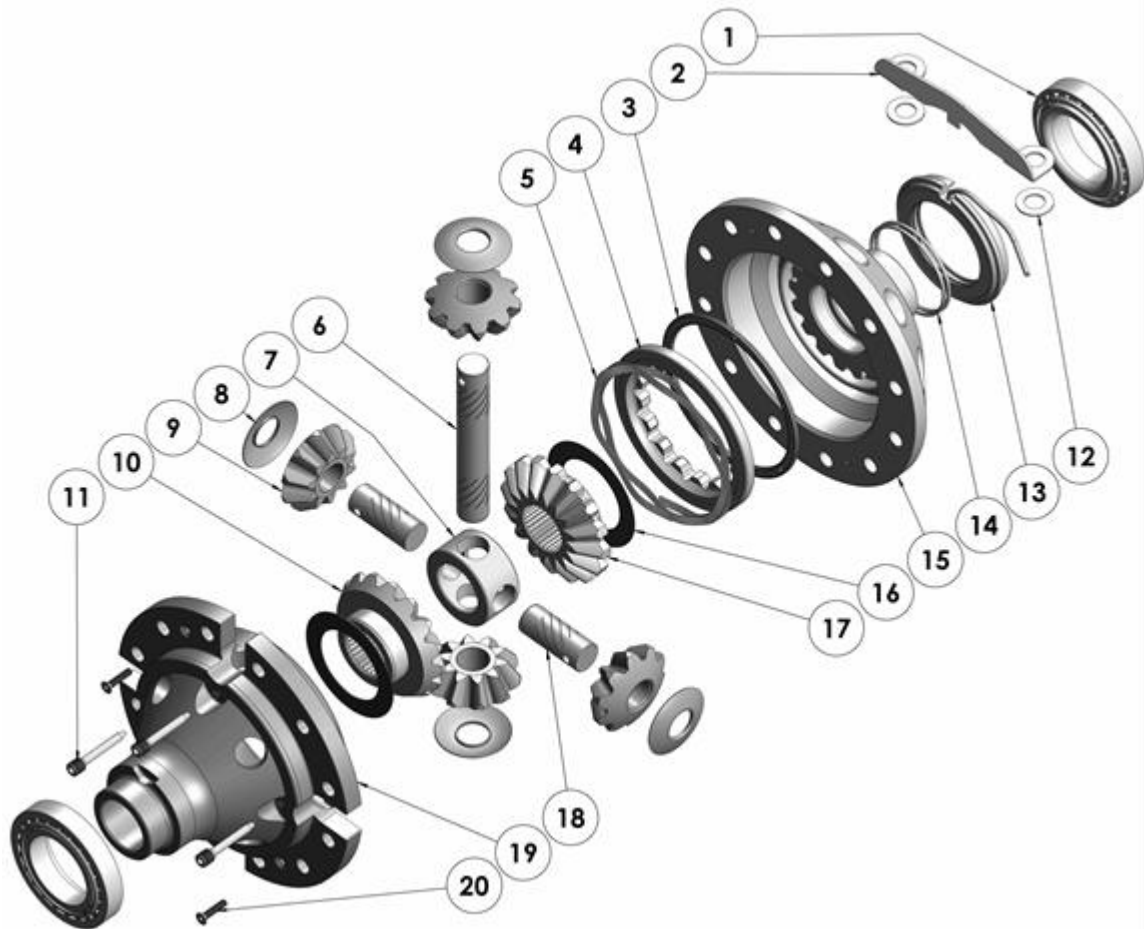
NOTES

- 1 For replacement O-rings use only BS148 Viton 75.
- 2 Available only as complete 6 gear set # 728K171
- 3 Available only as complete thrust washer kit #730K01
- 4 All diffs produced before serial #17070001 came with 5mm air connection system. For information contact ARB.
- Does not support OE ring & pinion ratios of 4.56:1 & up, however, most known aftermarket ring & pinion sets of the 4.56:1 & up range are made 'thick' to suit the 4.10:1 & down carrier.

RD235

GM 14 Bolt, 10.5", 35 SPL, FF

EXPLODED DIAGRAM



SPECIFICATIONS

| | |
|--------------------|---|
| Axle Spline | 35 tooth, Ø38.1mm [1.50"] |
| Ratio Supported | 4.10:1 & down (4.56 & UP ratios must use 'thick' type high offset gearset) |
| Ring Gear ID | 163.513mm [6.4375"] |
| Ring Gear OD | 267mm [10.5"] |
| Ring Gear Bolts | 12 bolts on Ø197.6mm [7.78"] |
| Ring Gear Torque | 163Nm [120 ft-lb] |
| Backlash | 0.13-0.20mm [0.005-0.008"] |
| Bearing Cap Torque | 183Nm [135 ft-lb] |

ARB Corporation Ltd • 42-44 Garden St Kilsyth VIC 3137 Australia
ARB 4X4 Accessories USA • 4810 D St. NW #103 Auburn WA 98001 USA
Australia & International Customer Service • +61 3 9761 6622
North America Customer Service • Toll Free 866 293 9078
www.arb.com.au (AUS & Int) www.arbusa.com (N. America)