

### RD263

### TOYOTA 300 SERIES, FRONT, 36 SPLINE

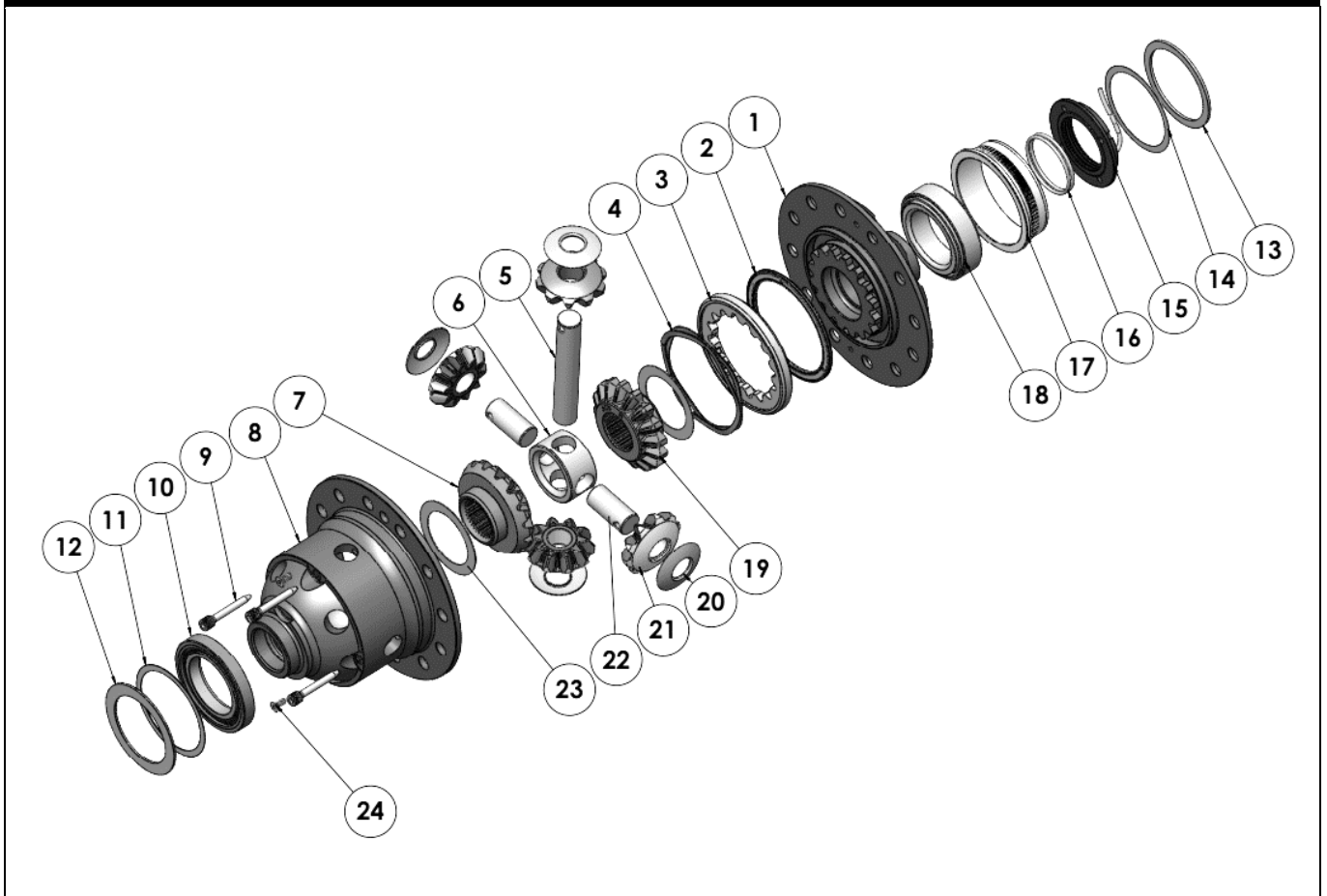
#### PARTS LIST

ITEM #	QTY	DESCRIPTION	PART #	NOTES
1	1	FLANGE CAP KIT	027360SP	
2	1	BONDED SEAL	160702SP	
3	1	CLUTCH GEAR & WAVESPRING KIT	050906SP	
4	1	WAVESPRING	150706SP	
5	1	LONG CROSS SHAFT	060204SP	
6	1	SPIDER BLOCK	070203SP	
7	1	SIDE GEAR	SEE NOTE	3
8	1	DIFFERENTIAL CASE	013060SP	
9	1	RETAINING PIN SET (PK OF 4)	120601SP	
10	1	TAPERED ROLLER BEARING	NOT SUPPLIED	5
11	1	SHIM KIT	SHK011	
12	1	OE MASTER SHIM	NOT SUPPLIED	
13	1	MASTER SHIM	150305	
14	1	SHIM KIT	SHK009	
15	1	SEAL HOUSING KIT	081805SP	
16	1	SEAL HOUSING O-RINGS (PK OF 2)	160207-2	1
17	1	BEARING RETAINING SLEEVE	190104	
18	1	TAPERED ROLLER BEARING	160119	2
19	1	SPLINED SIDE GEAR	SEE NOTE	3
20	4	PINION THRUST WASHER	SEE NOTE	4
21	4	PINION GEAR	SEE NOTE	3
22	2	SHORT CROSS SHAFT	060403SP	
23	2	SIDE GEAR THRUST WASHER	SEE NOTE	4
24	1	COUNTERSUNK SCREW (PK OF 2)	200213SP	
*	1	BULKHEAD FITTING KIT (BANJO TYPE)	170114	
*	1	AIR LINE (6mm DIA X 6m LONG)	170314SP	
*	1	SOLENOID VALVE (12V)	180103	
*	1	SWITCH FR LOCKER	180223	
*	1	CABLE TIE (PK OF 25)	180305	
*	1	OPERATION & SERVICE MANUAL	210200	
*	1	INSTALLATION GUIDE	2102263	

\* *Not illustrated in exploded view*

#### NOTES

- 1 For replacement O-rings use only BS136 Viton 75.
- 2 For replacement bearings use ARB #160119 (Toyota Aust #90366T0031)
- 3 Available only as complete 6 gear set #728H371
- 4 Available only as complete thrust washer kit #730H01
- 5 For replacement bearings use Toyota Aust #9036655095 (55x89x15)

**RD263****TOYOTA 300 SERIES, FRONT, 36 SPLINE****EXPLODED DIAGRAM****SPECIFICATIONS**

Axle Spline	36 tooth, Ø36.8mm [1.44"]
Ratio Supported	All
Ring Gear ID	134.0mm [5.28"]
Ring Gear OD	220mm [8.66"]
Ring Gear Bolts	12 bolts on Ø160mm [6.30"]
Ring Gear Torque	137Nm [101 ft-lb]
Backlash	0.17-0.27mm [0.006-0.010"]