

**RD38**

Dana 35, non C-clip, 27 SPL, 3.31 & DN\*\*

**\*\*THIS MODEL WAS SUPERSEDED BY RD103, CROSSED OUT PARTS NOT AVAILABLE**

### PARTS LIST

| ITEM # | QTY | DESCRIPTION                        | PART #   | NOTES |
|--------|-----|------------------------------------|----------|-------|
| 01     | 1   | FLANGE CAP                         | 021902   |       |
| 02     | 1   | CLUTCH GEAR                        | 050501   |       |
| 03     | 1   | DIFFERENTIAL CASE                  | 012002   |       |
| 04     | 1   | RETURN SPRINGS (PK OF 4)           | 150102SP |       |
| 05     | 1   | RETAINING PIN SET (PK OF 4)        | 120401SP |       |
| 06     | 1   | LONG CROSS SHAFT                   | 060104SP |       |
| 07     | 2   | SHORT CROSS SHAFT                  | 060306   |       |
| 08     | 1   | PISTON                             | 040601SP |       |
| 09     | 1   | U-RING                             | 160303SP |       |
| 10     | 1   | CYLINDER CAP                       | 030902   |       |
| 11     | 1   | SEAL HOUSING O-RINGS (PK OF 2)     | 160210-2 | 1     |
| 12     | 1   | CYL CAP RETAINING BOLT (PK OF 8)   | 200207SP |       |
| 13     | 1   | LOCKING TAB (6mm) (PK OF 8)        | 150402SP |       |
| 14     | 1   | TAPERED ROLLER BEARING             | 160105   | 2     |
| 15     | 1   | SEAL HOUSING KIT                   | 080603SP |       |
| 16     | 1   | SHIM KIT                           | SHK003   |       |
| 17     | 1   | SPLINED SIDE GEAR                  | 131004R  |       |
| 18     | 1   | PINION THRUST WASHER (PK OF 4)     | 151105SP |       |
| 19     | 4   | PINION GEAR                        | 140501R  |       |
| 20     | 1   | SPIDER BLOCK                       | 070501   |       |
| 21     | 1   | SIDE GEAR                          | 130901R  |       |
| 22     | 1   | S GEAR THRUST WASHER (PK OF 2)     | 151005SP |       |
| *      | 1   | BULKHEAD FITTING KIT               | 170102   |       |
| *      | 1   | PUSH-IN FITTING (5mm to 1/8" BSPP) | 170201SP |       |
| *      | 1   | AIR LINE (5mm DIA X 6m LONG)       | 170301SP |       |
| *      | 1   | SOLENOID VALVE (12V)               | 180103   |       |
| *      | 1   | SWITCH FR OR RR LOCKER             | 180225   |       |
| *      | 1   | CABLE TIE (PK OF 25)               | 180305   |       |
| *      | 1   | OPERATING & SERVICE MANUAL         | 210200   |       |
| *      | 1   | INSTALLATION GUIDE                 | 210238   |       |

\* *Not illustrated in exploded view*

### NOTES

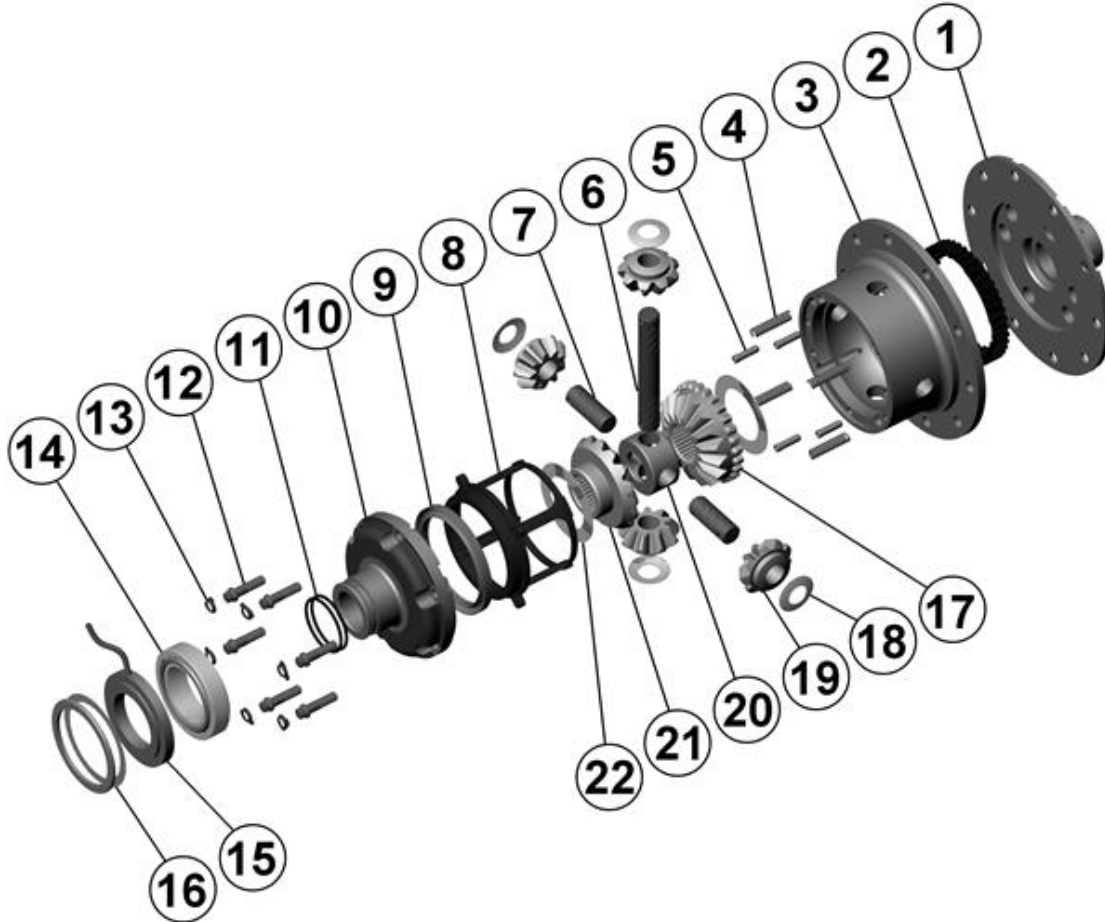
- 1 For replacement O-rings use only BS028 Viton 75.
- 2 For replacement bearing use Timken part # LM501349 / LM501310.
- Not for use with C-clip retained rear axle models unless a C-clip eliminator kit is used.
- For Ford IFS installation refer to tech note ([Section 5.12](#)) for alternative to C-clip use.

**RD38**

Dana 35, non C-clip, 27 SPL, 3.31 & DN\*\*

**\*\*THIS MODEL WAS SUPERSEDED BY RD103, CROSSED OUT PARTS NOT AVAILABLE**

### EXPLODED DIAGRAM



### SPECIFICATIONS

|                    |                            |
|--------------------|----------------------------|
| Axle Spline        | 27 tooth, Ø29.5mm [1.16"]  |
| Ratio Supported    | 3.31:1 & down              |
| Ring Gear ID       | 120.7mm [4.75"]            |
| Ring Gear OD       | 193mm [7.6"]               |
| Ring Gear Bolts    | 8 bolts on Ø146mm [5.75"]  |
| Ring Gear Torque   | 75Nm [55 ft-lb]            |
| Backlash           | 0.15-0.25mm [0.006-0.010"] |
| Bearing Cap Torque | 75Nm [55 ft-lb]            |

ARB Corporation Ltd • 42-44 Garden St Kilsyth VIC 3137 Australia  
ARB 4X4 Accessories USA • 4810 D St. NW #103 Auburn WA 98001 USA  
Australia & International Customer Service • +61 3 9761 6622  
North America Customer Service • Toll Free 866 293 9078  
www.arb.com.au (AUS & Int) www.arbusa.com (N. America)