

RD69

Dana 35,C-clip,27 SPL,3.54 & UP**

****THIS MODEL WAS SUPERSEDED BY RD102, CROSSED OUT PARTS NOT AVAILABLE**

PARTS LIST

ITEM #	QTY	DESCRIPTION	PART #	NOTES
01	1	FLANGE CAP	021904	
02	1	CLUTCH GEAR	050504	
03	1	DIFFERENTIAL CASE	042007	
04	1	RETAINING PIN SET (PK OF 4)	120401SP	3
*	1	CROSS SHAFT RETAINING PIN KIT	RPK001SP	3
05	1	LONG CROSS SHAFT	061404	
06	1	SHORT CROSS SHAFT	061204	
07	1	PISTON	040601SP	
08	1	U-RING	160303SP	
09	1	CYLINDER CAP	030904	
10	1	SEAL HOUSING O-RINGS (PK OF 2)	160210-2	1
11	1	CYL CAP RETAINING BOLT (PK OF 8)	200207SP	
12	1	LOCKING TAB (6mm) (PK OF 8)	150402SP	
13	1	TAPERED ROLLER BEARING	160105	2
14	1	SEAL HOUSING KIT	080603SP	
15	1	SHIM KIT	SHK003	
16	1	SPRING RETAINER RING	190101	
17	1	RETURN SPRINGS (PK OF 12)	150107SP	
18	1	COUNTERSUNK SCREW (PK OF 2)	200213SP	
19	1	SPLINED SIDE GEAR	131004R	
20	1	SPIDER BLOCK	070602	
21	3	PINION GEAR	140502R	
22	1	PINION THRUST WASHER (PK OF 4)	151107SP	
23	1	SIDE GEAR	130904R	
24	1	S GEAR THRUST WASHER (PK OF 2)	151005SP	
*	1	BULKHEAD FITTING KIT	170102	
*	1	PUSH-IN FITTING (5mm to 1/8"BSPP)	170201SP	
*	1	AIR LINE (5mm DIA X 6m LONG)	170301SP	
*	1	SOLENOID VALVE (12V)	180103	
*	1	SWITCH RR LOCKER	180224	
*	1	CABLE TIE (PK OF 25)	180305	
*	1	OPERATING & SERVICE MANUAL	210200	
*	1	INSTALLATION GUIDE	210269	

* *Not illustrated in exploded view*

NOTES

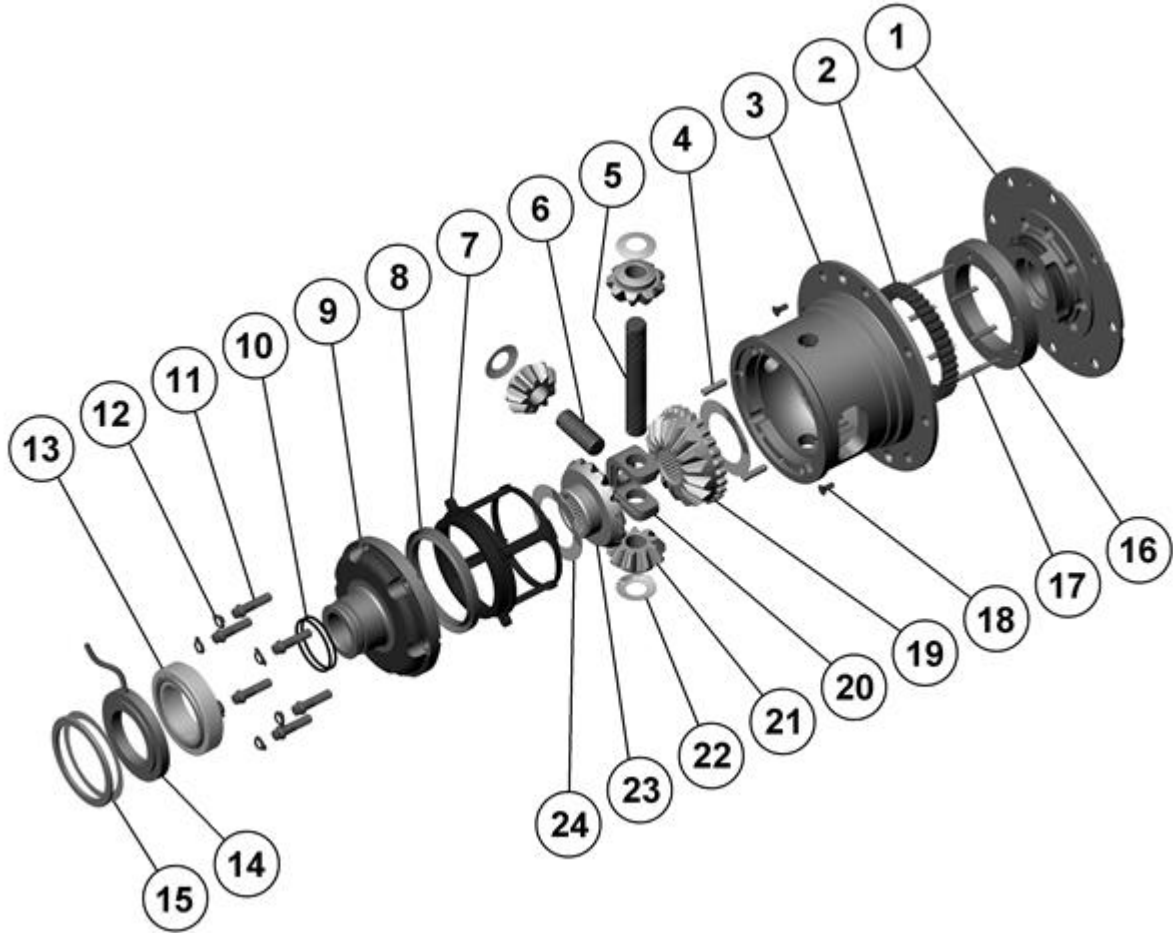
- 1 For replacement O-rings use only BS028 Viton 75.
- 2 For replacement bearing use Timken part # LM501349 / LM501310.
- 3 Short retaining pin for C-clip removal (ARB # 120402) comes in kit # RPK001.
- Newer OEM Dana 35 ring and pinion sets use 7/16" bolts. The flange holes of the Air Locker must be reamed from Ø3/8" to Ø7/16" to suit.
- Some OEM Dana 35 drive pinion gears extend too far into the centre and converge with the differential carrier. Refer to ring and pinion modification note ([Section 5.6](#)) for correction.

RD69

Dana 35, C-clip, 27 SPL, 3.54 & UP**

****THIS MODEL WAS SUPERSEDED BY RD102, CROSSED OUT PARTS NOT AVAILABLE**

EXPLODED DIAGRAM



SPECIFICATIONS

Axle Spline	27 tooth, Ø29.5mm [1.16"]
Ratio Supported	3.54:1 & up
Ring Gear ID	120.7mm [4.75"]
Ring Gear OD	193mm [7.6"]
Ring Gear Bolts	8 bolts on Ø146mm [5.75"]
Ring Gear Torque	75Nm [55 ft-lb]
Backlash	0.15-0.25mm [0.006-0.010"]
Bearing Cap Torque	75Nm [55 ft-lb]

ARB Corporation Ltd • 42-44 Garden St Kilsyth VIC 3137 Australia
ARB 4X4 Accessories USA • 4810 D St. NW #103 Auburn WA 98001 USA
Australia & International Customer Service • +61 3 9761 6622
North America Customer Service • Toll Free 866 293 9078
www.arb.com.au (AUS & Int) www.arbusa.com (N. America)