

### RD271

### TOYOTA PRADO 250, REAR, 30 SPLINE

#### PARTS LIST

ITEM #	QTY	DESCRIPTION	PART #	NOTES
01	1	FLANGE CAP KIT	027362SP	
02	1	BONDED SEAL	160702SP	
03	1	CLUTCH GEAR & WAVESPRING KIT	050906SP	
04	1	WAVESPRING	150706SP	
05	2	SIDE GEAR THRUST WASHER	SEE NOTE	1
06	1	SPLINED SIDE GEAR	SEE NOTE	2
07	4	PINION THRUST WASHER	SEE NOTE	1
08	4	PINION GEAR	SEE NOTE	2
09	2	SHORT CROSS SHAFT	060403SP	
10	1	LONG CROSS SHAFT	060204SP	
11	1	SIDE GEAR	SEE NOTE	2
12	1	DIFFERENTIAL CASE	013063SP	
13	1	COUNTERSUNK SCREW (PK OF 2)	200213SP	
14	1	RETAINING PIN SET (PK OF 4)	120601SP	
15	-	TAPERED ROLLER BEARING	NOT SUPPLIED	
16	1	SHIM KIT	SHK008	
17	1	SHIM KIT	SHK009	
18	1	SEAL HOUSING O-RINGS (PK OF 2)	160207-2	3
19	1	SEAL HOUSING KIT	081836SP	
20	-	TAPERED ROLLER BEARING	NOT SUPPLIED	
21	1	SPIDER BLOCK	070201SP	
*	1	BULKHEAD SEAT	110403SP	
*	1	WASHER FLAT M6X25X2.8	4584379	
*	1	BULKHEAD FITTING (BANJO TYPE)	170114	
*	1	AIR LINE (6mm DIA X 6m LONG)	170314SP	
*	1	SOLENOID VALVE (12V)	180103	
*	1	SWITCH RR LOCKER	180224	
*	1	CABLE TIE (PK OF 25)	180305	
*	1	OPERATING & SERVICE MANUAL	210200	
*	1	INSTALLATION GUIDE	2102271	
*	1	DIFF INSTALLATON RECORD	215762A	

\* *Not illustrated in exploded view*

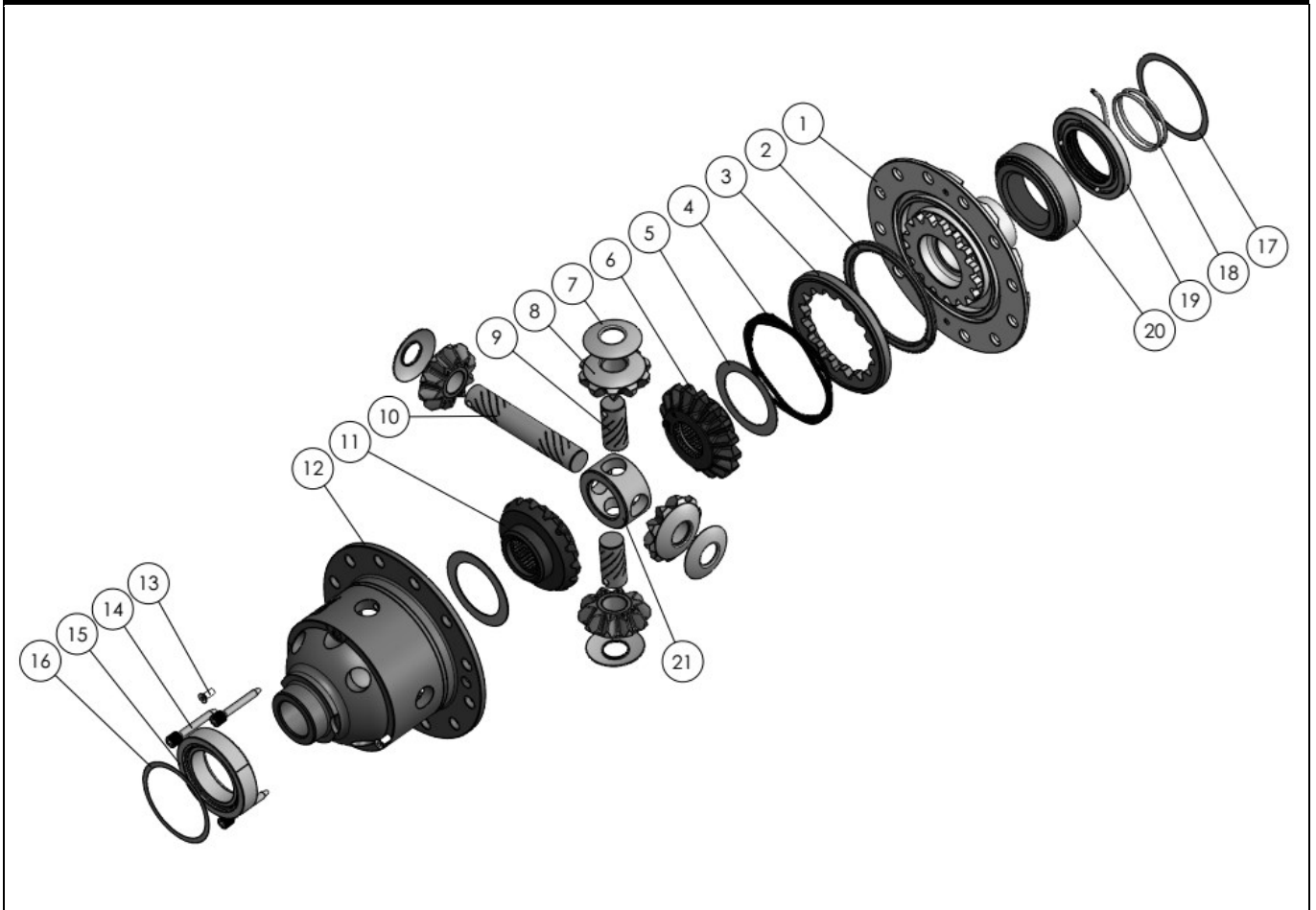
#### NOTES

- 1 Available only as complete thrust washer kit #730H01
- 2 Available only as complete 6 gear set # 728H111
- 3 For replacement O-rings use only BS136 Viton 75.

**RD271**

TOYOTA PRADO 250, REAR, 30 SPLINE

### EXPLODED DIAGRAM



### SPECIFICATIONS

Axle Spline	30 tooth, Ø33mm [1.30"]
Ratio Supported	All
Ring Gear ID	126.0mm [4.96"]
Ring Gear OD	207mm [8.15"]
Ring Gear Bolts	12 bolts on Ø160.0mm [6.30"]
Ring Gear Torque	92Nm [68 ft-lb]
Backlash	0.10-0.20mm [0.0039-0.0079"]
Bearing Cap Torque	95Nm [70 ft-lb]

ARB Corporation Ltd • 42-44 Garden St Kilsyth VIC 3137 Australia  
 ARB 4X4 Accessories USA • 4810 D St. NW #103 Auburn WA 98001 USA  
 Australia & International Customer Service • +61 3 9761 6622  
 North America Customer Service • Toll Free 866 293 9078  
 www.arb.com.au (AUS & Int) www.arbusa.com (N. America)

