

### RD105

Dana 35,30 SPL,3.54 & UP

### PARTS LIST

| ITEM # | QTY | DESCRIPTION                       | PART #   | NOTES |
|--------|-----|-----------------------------------|----------|-------|
| 01     | 1   | SPLINED SIDE GEAR                 | SEE NOTE | 3     |
| 02     | 1   | SPIDER BLOCK                      | 070801SP |       |
| 03     | 1   | LONG CROSS SHAFT                  | 061302SP |       |
| 04     | 1   | SIDE GEAR                         | SEE NOTE | 3     |
| 05     | 2   | SIDE GEAR THRUST WASHER           | SEE NOTE | 4     |
| 06     | 1   | COUNTERSUNK SCREW (PK OF 2)       | 200213SP |       |
| 07     | 1   | RETAINING PIN SET (PK OF 4)       | 120601SP |       |
| 08     | 1   | SEAL HOUSING O-RINGS (PK OF 2)    | 160235-2 | 1     |
| 09     | 1   | SEAL HOUSING KIT                  | 081801SP |       |
| 10     | 2   | SHIM KIT                          | SHK003   |       |
| *      | 2   | MASTER SHIM                       | 150325   |       |
| 11     | 2   | TAPERED ROLLER BEARING            | 160109   | 2     |
| 12     | 1   | FLANGE CAP KIT                    | 028504SP |       |
| 13     | 1   | BONDED SEAL                       | 160701SP |       |
| 14     | 1   | CLUTCH GEAR & WAVESPRING KIT      | 050903SP |       |
| 15     | 1   | WAVESPRING                        | 150702SP |       |
| 16     | 1   | SHORT CROSS SHAFT                 | 061402SP |       |
| 17     | 3   | PINION GEAR                       | SEE NOTE | 3     |
| 18     | 3   | PINION THRUST WASHER              | SEE NOTE | 4     |
| 19     | 1   | DIFFERENTIAL CASE                 | 013104SP |       |
| *      | 1   | BULKHEAD FITTING KIT (BANJO TYPE) | 170114   | 5     |
| *      | 1   | AIR LINE (6mm DIA X 6m LONG)      | 170314   | 5     |
| *      | 1   | SOLENOID VALVE (12V)              | 180103   |       |
| *      | 1   | SWITCH RR LOCKER                  | 180224SP |       |
| *      | 1   | CABLE TIE (PK OF 25)              | 180305   |       |
| *      | 1   | OPERATING & SERVICE MANUAL        | 210200   |       |
| *      | 1   | INSTALLATION GUIDE                | 2102105  |       |

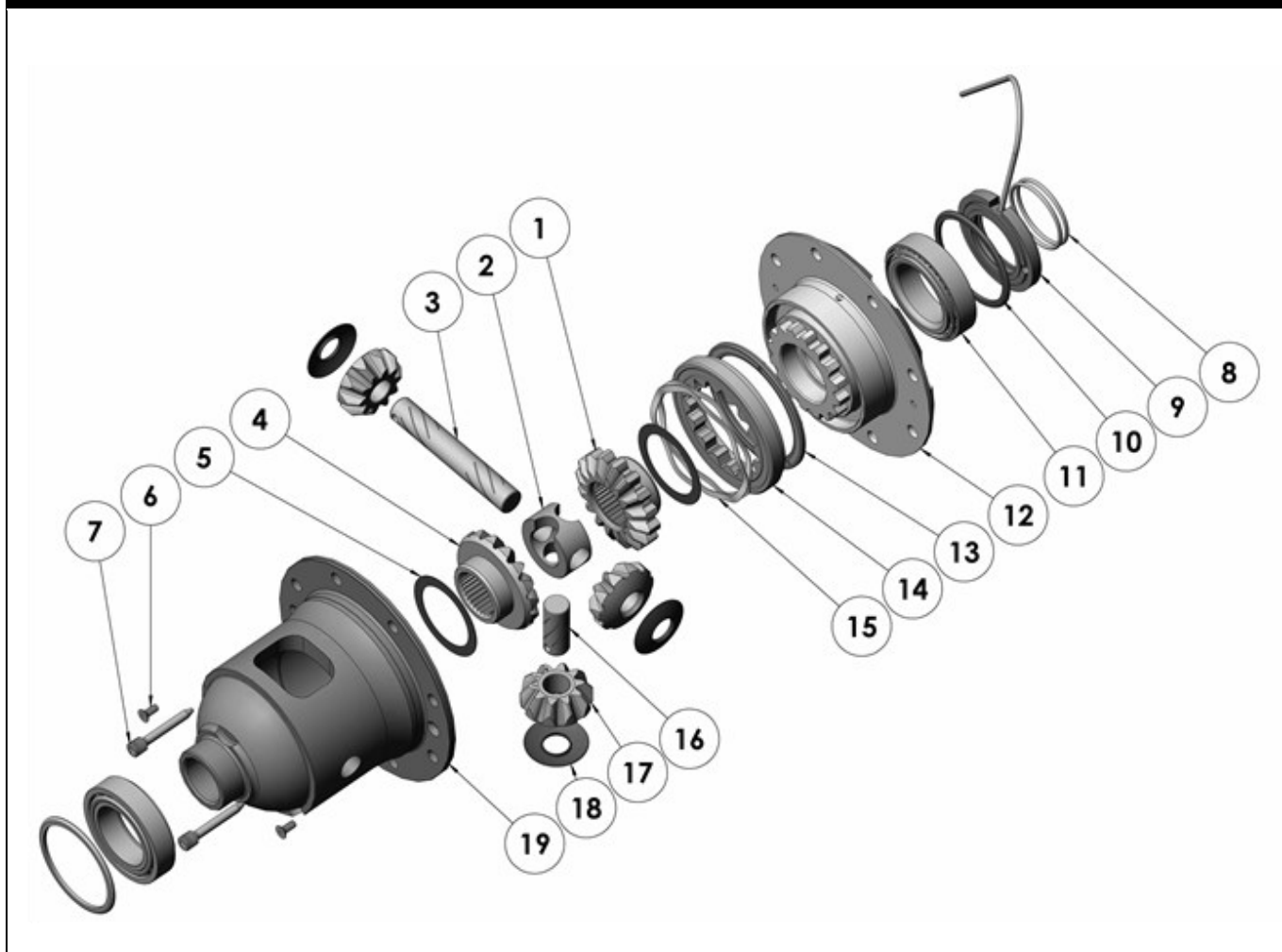
\* *Not illustrated in exploded view*

### NOTES

- 1 For replacement O-rings use only BS133 Viton 75.
- 2 For replacement bearing use Timken part # LM102949 / LM102910.
- 3 Available only as complete 5 gear set #728J031C
- 4 Available only as complete thrust washer kit #730J01
- 5 All diffs produced before serial #17070001 came with 5mm air connection system. For information contact ARB.
- Newer OEM Dana 35 ring and pinion sets use 7/16" bolts. The flange holes of the Air Locker must be reamed from Ø3/8" to Ø7/16" to suit. Some OEM Dana 35 drive pinion gears extend too far into the centre and converge with the differential carrier.
- Refer to ring and pinion modification note ([Section 5.6](#)) for correction.
- 30 spline Dana 35 is a performance upgrade requiring aftermarket axle shafts.

**RD105**

Dana 35,30 SPL,3.54 &amp; UP

**EXPLODED DIAGRAM****SPECIFICATIONS**

|                    |                            |
|--------------------|----------------------------|
| Axle Spline        | 30 tooth, Ø33.3mm [1.31"]  |
| Ratio Supported    | 3.54:1 & up                |
| Ring Gear ID       | 120.7mm [4.75"]            |
| Ring Gear OD       | 193mm [7.6"]               |
| Ring Gear Bolts    | 8 bolts on Ø146mm [5.75"]  |
| Ring Gear Torque   | 75Nm [55 ft-lb]            |
| Backlash           | 0.15-0.25mm [0.006-0.010"] |
| Bearing Cap Torque | 75Nm [55 ft-lb]            |

ARB Corporation Ltd ▪ 42-44 Garden St Kilsyth VIC 3137 Australia  
ARB 4X4 Accessories USA ▪ 4810 D St. NW #103 Auburn WA 98001 USA  
Australia & International Customer Service ▪ +61 3 9761 6622  
North America Customer Service ▪ Toll Free 866 293 9078  
[www.arb.com.au](http://www.arb.com.au) (AUS & Int) [www.arbusa.com](http://www.arbusa.com) (N. America)