

### RD206

Suzuki Jimny,FR,22 SPL,10 Bolt RG

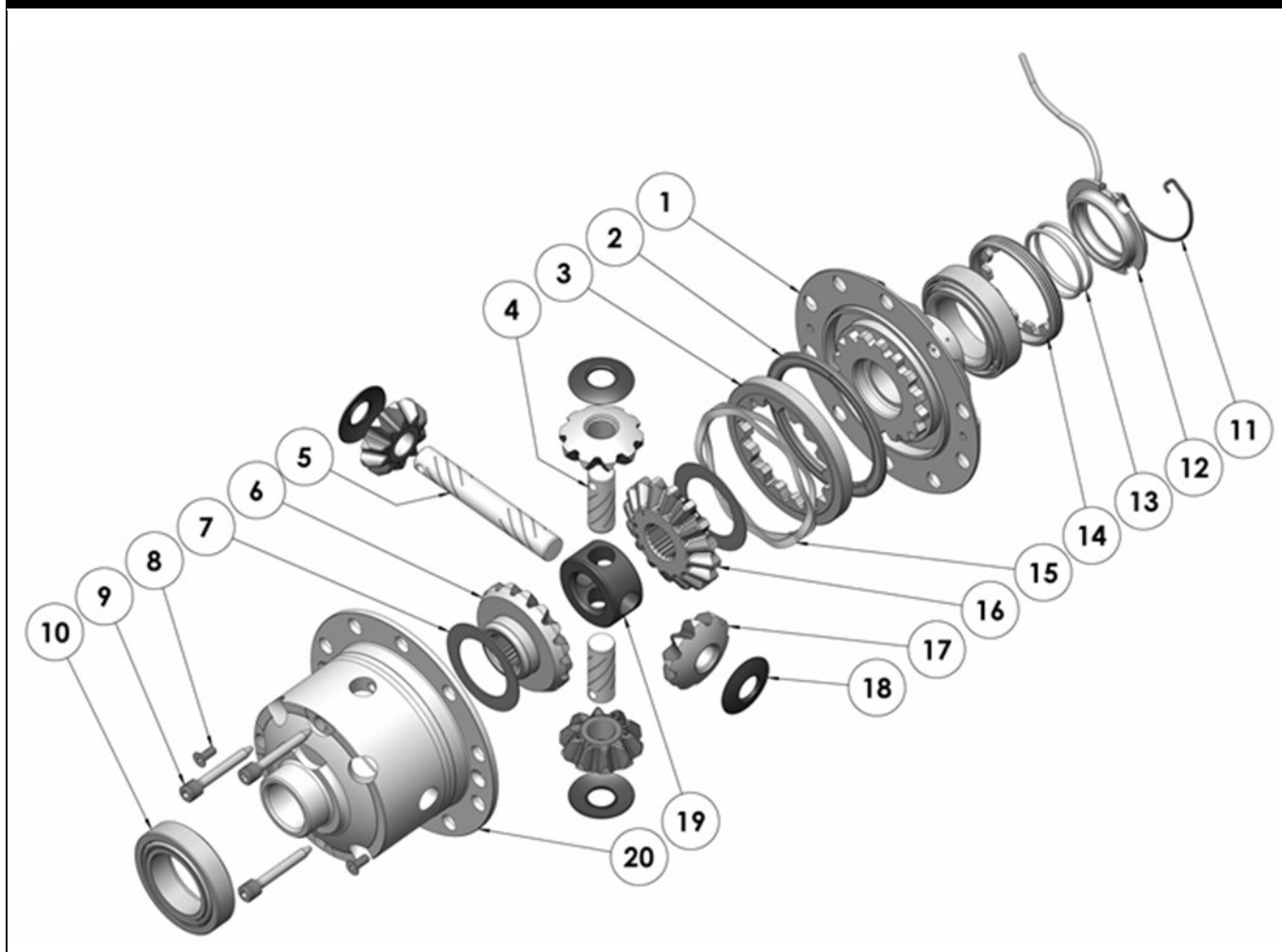
### PARTS LIST

| ITEM # | QTY | DESCRIPTION                       | PART #       | NOTES |
|--------|-----|-----------------------------------|--------------|-------|
| 01     | 1   | FLANGE CAP KIT                    | 028512SP     |       |
| 02     | 1   | BONDED SEAL                       | 160701SP     |       |
| 03     | 1   | CLUTCH GEAR & WAVESPRING KIT      | 050908SP     |       |
| 04     | 2   | SHORT CROSS SHAFT                 | 060309SP     |       |
| 05     | 1   | LONG CROSS SHAFT                  | 060108SP     |       |
| 06     | 1   | SIDE GEAR                         | SEE NOTE     | 2     |
| 07     | 2   | SIDE GEAR THRUST WASHER           | SEE NOTE     | 3     |
| 08     | 1   | COUNTERSUNK SCREW (PK OF 2)       | 200213SP     |       |
| 09     | 1   | RETAINING PIN SET (PK OF 4)       | 120601SP     |       |
| 10     | -   | TAPERED ROLLER BEARING            | NOT SUPPLIED |       |
| 11     | 1   | SEAL HOUSING RETAINING CLIP       | 150603SP     |       |
| 12     | 1   | SEAL HOUSING KIT                  | 081903SP     |       |
| 13     | 1   | SEAL HOUSING O-RINGS (PK OF 2)    | 160206-2     | 1     |
| 14     | 1   | ADJUSTER NUT                      | 100601SP     |       |
| 15     | 1   | WAVESPRING                        | 150702SP     |       |
| 16     | 1   | SPLINED SIDE GEAR                 | SEE NOTE     | 2     |
| 17     | 4   | PINION GEAR                       | SEE NOTE     | 2     |
| 18     | 4   | PINION THRUST WASHER              | SEE NOTE     | 3     |
| 19     | 1   | SPIDER BLOCK                      | 070702SP     |       |
| 20     | 1   | DIFFERENTIAL CASE                 | 013112SP     |       |
| *      | 1   | BULKHEAD FITTING KIT (BANJO TYPE) | 170114       | 4     |
| *      | 1   | AIR LINE (6mm DIA X 6m LONG)      | 170314       | 4     |
| *      | 1   | SOLENOID VALVE (12V)              | 180103       |       |
| *      | 1   | SWITCH FR LOCKER                  | 180223SP     |       |
| *      | 1   | CABLE TIE (PK OF 25)              | 180305       |       |
| *      | 1   | OPERATING & SERVICE MANUAL        | 210200       |       |
| *      | 1   | INSTALLATION GUIDE                | 2102206      |       |

\* *Not illustrated in exploded view*

### NOTES

- 1 For replacement O-rings use only BS130 Viton 75.
- 2 Available only as complete 6 gear set # 728JA22
- 3 Available only as complete thrust washer kit #730JA01
- 4 All diffs produced before serial #17070001 came with 5mm air connection system. For information contact ARB.
- Refer to seal housing set-up tech note ([Section 5.2](#)).
- For 8 bolt ring gear model refer to RD207 ([Section 2.207](#)).

**EXPLODED DIAGRAM****SPECIFICATIONS**

|                    |                            |
|--------------------|----------------------------|
| Axle Spline        | 22 tooth, Ø23.9mm [0.94"]  |
| Ratio Supported    | All                        |
| Ring Gear ID       | 108.0mm [4.25"]            |
| Ring Gear Bolts    | 10 bolts on Ø130mm [5.12"] |
| Ring Gear Torque   | 85Nm [63 ft-lb]            |
| Backlash           | 0.10-0.20mm [0.004-0.008"] |
| Bearing Cap Torque | 50Nm [37 ft-lb]            |