

RD231

Nissan R180A,30 SPL,3.54 & DN

PARTS LIST

| ITEM # | QTY | DESCRIPTION | PART # | NOTES |
|--------|-----|--------------------------------|--------------|-------|
| 1 | 1 | FLANGE CAP KIT | 028517SP | |
| 2 | 1 | BONDED SEAL | 160701SP | |
| 3 | 1 | CLUTCH GEAR & WAVESPRING KIT | 050903SP | |
| 4 | 2 | SHORT CROSS SHAFT | 061402SP | |
| 5 | 1 | LONG CROSS SHAFT | 061302SP | |
| 6 | 1 | SIDE GEAR | SEE NOTE | 2 |
| 7 | 2 | SIDE GEAR THRUST WASHER | SEE NOTE | 4 |
| 8 | 1 | COUNTERSUNK SCREW (PK OF 2) | 200213SP | |
| 9 | 1 | RETAINING PIN SET (PK OF 4) | 120601SP | |
| 10 | * | TAPERED ROLLER BEARING | NOT SUPPLIED | |
| 11 | 1 | SEAL HOUSING KIT | 081819SP | |
| 12 | 2 | SEAL HOUSING O-RINGS (PK OF 2) | 160206-2 | 1 |
| 13 | 1 | SHIM KIT | SHK008 | |
| 14 | 1 | WAVESPRING | 150702SP | |
| 15 | 1 | SPLINED SIDE GEAR | SEE NOTE | 2 |
| 16 | 4 | PINION GEAR | SEE NOTE | 2 |
| 17 | 4 | PINION THRUST WASHER | SEE NOTE | 4 |
| 18 | 1 | SPIDER BLOCK | 070503SP | |
| 19 | 1 | DIFFERENTIAL CASE | 013126SP | |
| * | 1 | BULKHEAD FITTING (BANJO TYPE) | 170114 | 5 |
| * | 1 | AIR LINE (6mm DIA X 6m LONG) | 170314 | 5 |
| * | 1 | SOLENOID VALVE (12V) | 180103 | |
| * | 1 | SWITCH FR LOCKER | 180223SP | |
| * | 1 | CABLE TIE (PK OF 25) | 180305 | |
| * | 1 | OPERATION & SERVICE MANUAL | 210200 | |
| * | 1 | INSTALLATION GUIDE | 2102231 | |

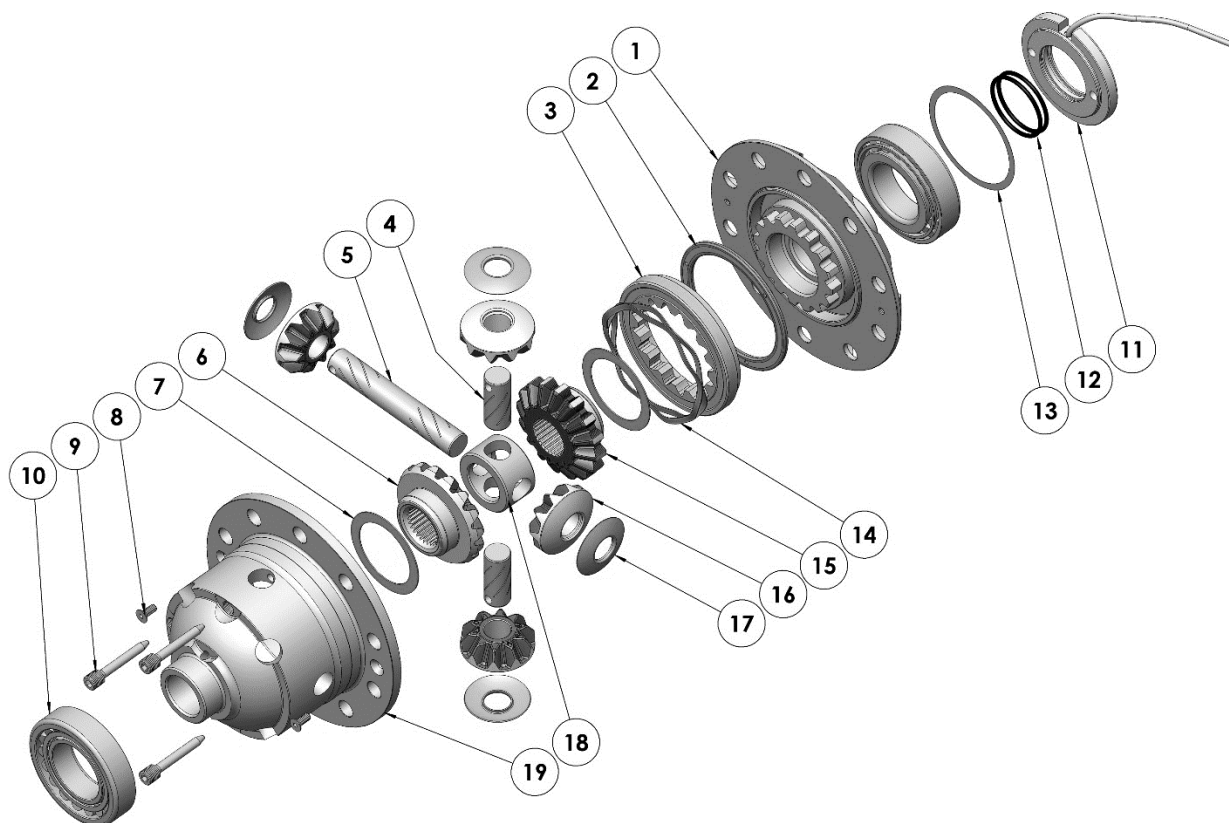
* *Not illustrated in exploded view*

NOTES

- 1 For replacement O-rings use only BS130 Viton 75.
- 2 Available only as complete 6 gear set # 728J061
- 3 Torque to 58.8 Nm [43 ft-lb], then tighten bolts additionally by turning 34° to 39° further.
- 4 Available only as complete thrust washer kit #730J01
- 5 All diffs produced before serial #17070001 came with 5mm air connection system. For information contact ARB.
- For ratios of 3.69:1 and up, refer to RD230 ([Section 2.230](#))

RD231

Nissan R180A,30 SPL,3.54 & DN

EXPLODED DIAGRAM**SPECIFICATIONS**

| | |
|---------------------|-----------------------------|
| Axle Spline | 30 tooth, Ø30.8mm [1.21"] |
| Ratio Supported | 3.54 & Down |
| Ring Gear ID | 115.0mm [4.53"] |
| Ring Gear Bolts | 10 bolts on Ø142mm [5.59"] |
| Ring Gear Bolt Size | 12.2mm [0.48"] |
| Ring Gear Torque | SEE NOTE 3 |
| Backlash | 0.10-0.15mm [0.004"-0.006"] |
| Bearing Cap Torque | 93 Nm [69 ft-lb] |