

RD254
AAM 925 & 950 33 SPL|LOW SPD

PARTS LIST

ITEM #	QTY	DESCRIPTION	PART #	NOTES
1	1	FLANGE CAP KIT	028621SP	
2	1	BONDED SEAL	160703SP	
3	1	CLUTCH GEAR & WAVESPRING KIT	050907SP	
4	1	LONG CROSS SHAFT	061501SP	
5	1	SHORT CROSS SHAFT	061601SP	
6	2	SIDE GEAR THRUST WASHER	SEE NOTE	4
7	1	DIFFERENTIAL CASE	013234SP	
8	1	RETAINING PIN SET (PK OF 4)	120601SP	
9	1	COUNTERSUNK SCREW (PK OF 2)	200213SP	
10	2	TAPERED ROLLER BEARING	NOT SUPPLIED	2
11	1	SEAL HOUSING KIT	080903SP	
12	2	SEAL HOUSING O-RINGS (PK OF 2)	160239-2	1
13	1	WAVESPRING	150707SP	
14	1	SPLINED SIDE GEAR	SEE NOTE	3
15	1	SPIDER BLOCK	070404SP	
16	3	PINION GEAR	SEE NOTE	3
17	3	PINION THRUST WASHER	SEE NOTE	4
18	1	SIDE GEAR	SEE NOTE	3
*	1	SEAL HOUSING BRACKET (LIVE AXLE)	220203	
*	1	SEAL HOUSING BRACKET (IFS)	220211	
*	1	BULKHEAD FITTING KIT (BANJO TYPE)	170114	
*	1	AIR LINE (6mm DIA X 6m LONG)	170314SP	
*	1	SOLENOID VALVE (12V)	180103	
*	1	SWITCH FR OR RR LOCKER	180225SP	
*	1	CABLE TIE (PK OF 25)	180305	
*	1	OPERATING & SERVICE MANUAL	210200	
*	1	INSTALLATION GUIDE	210254	

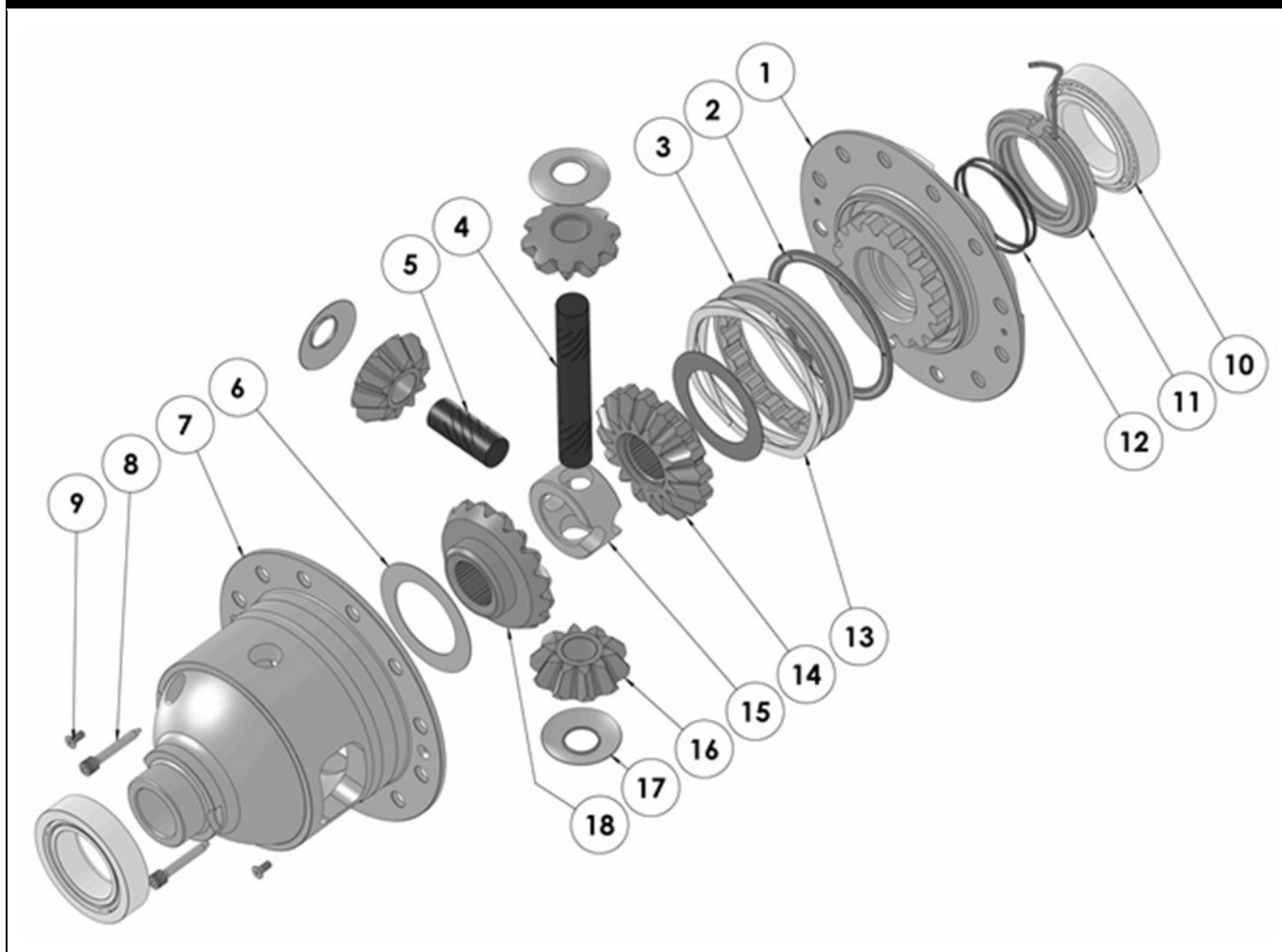
* *Not illustrated in exploded view*

NOTES

- 1 For replacement O-rings use only BS140 Viton 75.
- 2 For replacement bearing use Timken part # JLM506849A-JLM506811.
- 3 Available only as complete 6 gear set # 728K131.
- 4 Available only as complete thrust washer kit #730K01.
- Ring gear bolts are M12 x 1.5mm left-hand thread, and must be removed in a clockwise direction.
- Use extreme care to protect the sealing faces of the flange cap when separating the two halves of the clamshell housing.

RD254

AAM 925 & 950 33 SPL|LOW SPD

EXPLODED DIAGRAM**SPECIFICATIONS**

Axle Spline	33 tooth, Ø34.8mm [1.37"]
Ratio Supported	Low speed carrier-Ref R&P manufacturer
Ring Gear ID	152.9mm [6.02"]
Ring Gear OD	235mm [9.25"] / 241mm [9.50"]
Ring Gear Bolts	12 bolts on Ø181mm [7.13"]
Ring Gear Torque	88Nm [65 ft-lb]
Backlash	0.15-0.25mm [0.006-0.010"]
Bearing Cap Torque	108Nm [80 ft-lb]